



**NEW MEXICO ENVIRONMENT DEPARTMENT  
GROUND WATER QUALITY BUREAU**



**PUBLIC INVOLVEMENT PLAN  
(PIP)**

**Facility Name:** San Rafael Water and Sanitation District

**Facility Location:** 419-A Ice Cave Road  
Section 14, Township 10N, Range 10W

**County:** Cibola

**Responsible Party:** Salvador Marez, Chairman  
P.O. Box 99, San Rafael, NM 87051

**Agency:** Ground Water Quality Bureau  
Pollution Prevention Section

**GWQB Action:** Permitting - Renewal  
DP-58

**Bureau Contact:** Andrew Romero, Environmental Scientist  
(505) 827-0076  
andrewc.romero@state.nm.us

**EFFECTIVE DATE:** September 26, 2018

**REVISION DATE:** N/A

/s/ Michelle Hunter  
**Michelle Hunter**  
**Chief, Ground Water Quality Bureau**

## Element 1 – Public Involvement Plan (PIP) Overview

The New Mexico Environment Department (NMED or Department), Ground Water Quality Bureau (Bureau) has developed this PIP for the application for discharge permit renewal for the San Rafael Water and Sanitation District. The groundwater discharge permit for this facility is referred to as DP-58.

The purpose of this PIP is to plan for providing public participation opportunities and information that may be needed for the community to participate in the permitting process for this facility. This PIP identifies information about the community and resources needed by the Bureau to incorporate community participation activities into the decision-making process. This PIP is developed in accordance with the Department's *Public Participation Policy* (Policy 07-13 or Policy), and incorporates the requirements of the Policy, as well as applicable regulatory and statutory public participation requirements.

This PIP implements the “elements” set forth in the Policy. Those elements include:

1. An overview of the Public Involvement Plan for the community affected by the activity
2. Bureau contact names and contact information, specifically for Limited English Proficiency (LEP) language assistance services (e.g., translation, interpreters) or for disability accommodations
3. A summary of the regulatory public participation framework associated with discharge permits
4. A description of community/stakeholder groups based on results of a preliminary environmental justice (EJ) screening
5. Details about planned public outreach activities

In developing this PIP, community participation needs were assessed to ensure appropriate public outreach. This was accomplished by identifying whether there is a combination of environmental and demographic factors that may impact public participation (e.g., low income community, minority community, LEP individuals, linguistically isolated households). Because the community located near the San Rafael Water and Sanitation District includes a significant percentage of Navajo and Spanish speakers, the Bureau will provide appropriate information in both English, Spanish and Navajo to make public participation efforts as inclusive as possible within Bureau time limitations. Navajo is a language that is spoken, not written; therefore, the Bureau will provide public service announcements to a Navajo radio station.

Public involvement associated with discharge permits occurs at different stages and in different forms. Public involvement activities required by statute or regulation are mandatory and subject to statutory or regulatory deadlines. Mandatory public involvement activities and associated time requirements relevant to this PIP are noted in the *Table of Mandated Public Involvement Activities* at the end of this PIP.

The Bureau plans to conduct the public involvement activities related to the permitting process outlined in the *Table of Public Involvement Activities* below. The activity timeline and dates are tentative and subject to change.

### Table of Public Involvement Activities

Activity	Date
<b>Public Notice One (PN-1)</b> <i>See Table of Mandated Public Involvement Activities at the end of this PIP for details.</i>	August 2017
<b>Placement of a hardcopy of the PIP</b> in the local field office: Grants Field Office 708 Uranium Ave. Milan, NM 87021 (505) 209-4042	September 2017
<b>Notice of availability of draft permit (PN-2)</b> <i>See Table of Mandated Public Involvement Activities.</i> Being provided in English and Spanish, beyond regulatory requirement.  Public service announcements in English will be provided for broadcast on a Navajo radio station.	To be determined

All notices for upcoming meetings or hearings will include a statement that any person who requires assistance, an interpreter, or an auxiliary aid to participate in the process may contact a specifically identified Department person to request those services. Requested interpretation services during the meeting and accommodations or services for persons with disabilities will be arranged to the extent possible.

This PIP is a “living” document that may be amended for numerous reasons, including the consideration of public comments and feedback.

## Element 2 – Bureau Contact Information

### PIP Specific Contacts

The Bureau contact for this discharge permit is:

Andrew Romero, Environmental Scientist & Specialist  
NMED Ground Water Quality Bureau  
P.O. Box 5469  
Santa Fe, New Mexico 87502-5469  
(505) 827-0076  
andrewc.romero@state.nm.us

### **Non-English Language Speaker Assistance**

All public notices will contain a statement that non-English speakers may call the Bureau contact listed above and request language assistance in order to learn more about this permit or the permitting process. Arrangements may be made for document translation or interpretation related to the permitting process as necessary and as resources allow.

### **Individuals with Disabilities Assistance and Accommodation**

All public notices will contain a statement that disabled individuals may call the Bureau contact listed above and request assistance needed to participate in activities associated with the permitting process.

The following numbers will be provided in public notices so that hearing-impaired callers can contact the Bureau and ask questions about the activity or proceeding: Toll-free numbers are available for TDD or TTY users to access the New Mexico Relay network (for deaf or hearing-impaired callers), 1-800-659-1779; TTY users: 1-800-659-8331.

### **Websites**

Outreach materials and notices will include links to the following websites:

Ground Water Quality Bureau – <https://www.env.nm.gov/gwqb/>  
New Mexico Environment Department - <https://www.env.nm.gov/>

## **Element 3 – Regulatory Framework for Public Participation Related to the Permitting Process**

The public participation regulatory framework associated with the permitting process is identified in the *Table of Mandated Public Involvement Activities* at the end of this PIP. The Table identifies activities subject to statutory or regulatory deadlines, the associated regulatory requirements, and the associated dates or time periods.

## **Element 4 – Description of Community/Stakeholder Groups Based on the EJSCREEN**

## EJSCREEN Summary

To provide for adequate public participation opportunities and meaningful involvement of persons in the permitting process, the affected communities must first be identified, informed about proposed environmental actions affecting the community, and invited to share their comments and concerns. The EJSCREEN tool developed by the U.S. Environmental Protection Agency (EPA) helps identify communities that are low income, have minority populations, and have limited English proficiency that may benefit from a variety of approaches for notification and outreach communication. This information is used to help plan for the community's involvement in the public process for environmental activities or actions. In addition to the EJSCREEN results, the Bureau may consider additional information such as the U.S. Census Bureau website or NMED's EJ Mapping Tool.

The Bureau considers the affected community to be those persons living within the geographic area depicted on the attached EJSCREEN document that includes the discharge site. The results of the EJSCREEN American Community Survey (ACS) Summary Report (attached to this PIP) are summarized in the table below.

### EJSCREEN Results for the Affected Community

Total population	2,416
Total number of households	797
Percentage minority population	70%
Percentage Hispanic population	56%
Percentage of the population by race	Population reporting one race: Whites: 66% Black: 1% American Indian: 13% Other Race: 15%
Total number of persons greater than the age of five who speak English "less than very well"	254
Percentage of persons greater than the age of five who speak English "less than very well"	11%
Total number of linguistically isolated households	55
Percentage of linguistically isolated households (Total number of linguistically isolated households ÷ total number of households X 100)	6.9%
Languages by percentage in linguistically isolated households	Spanish: 56% Other Indo-European languages: 41% Asian-Pacific Island languages: 2%

Percent linguistically isolated population, New Mexico*:	5.4%
Per capita income	\$18,715
Per capita income, USA**	\$29,979

\* U.S. Census Bureau. 2011-2015 American Community Survey 5-Year Estimates, Table S1602. Limited English Speaking Households. [https://factfinder.census.gov/bkmk/table/1.0/en/ACS/15\\_5YR/S1602/0400000US35](https://factfinder.census.gov/bkmk/table/1.0/en/ACS/15_5YR/S1602/0400000US35) (date of access: 7/26/2018).

\*\* U.S. Census Bureau. 2015 American Community Survey 1-Year Estimates, Table S0201. Selected Population Profile in the United States. [https://factfinder.census.gov/bkmk/table/1.0/en/ACS/15\\_1YR/S0201/0100000US](https://factfinder.census.gov/bkmk/table/1.0/en/ACS/15_1YR/S0201/0100000US) (date of access: 7/26/2018).

The EJSCREEN results indicate that for the affected community the proportion of the population with limited English proficiency (LEP) is significant. The Bureau has therefore performed a LEP assessment for the community and attaches that assessment to this PIP.

Because the affected community has a significant percentage of persons with difficulties communicating in English, the Bureau will consider the language and communication needs of this community when conducting public outreach and participation activities. To accomplish this the Bureau will provide the same information in Spanish as in English in public comment notices, public meeting notices, and other announcements (e.g., radio broadcasts, brochures, signs, postcards) and will strive to make public participation efforts as inclusive as possible within the Bureau's budget and time limitations.

## **Element 5 – Detailed Actions and Outreach Activities with the Affected Public**

Public involvement activities required by statute or regulation for this permitting action are listed in the *Table of Mandated Public Involvement Activities* at the end of this document.

### **Public Participation – Outreach Activities**

The Bureau will conduct the following outreach activities during this permitting process:

- Placement of this PIP on the Bureau website and in nearby NMED field office
- Postal mailing and email notices
- Newspaper notices
- Notice posted on NMED website
- Radio announcements

Newspapers utilized in the notification process include:

- Statewide circulation English: Albuquerque Journal
- Local circulation (English and Spanish): Cibola Beacon – Cibola County

Radio stations utilized in the public involvement process include:

- KTNN

Local, state, and federal government agencies, tribal entities, and land grant officials will be notified about the permitting process. A list of the agencies and officials notified can be provided upon request.

Indian Tribes, Pueblos and Nations will be notified about the permitting action through the contacts maintained by the Indian Affairs Department at the following URLs:

<http://www.iad.state.nm.us/apaches.html>

<http://www.iad.state.nm.us/navajo.html>

<http://www.iad.state.nm.us/pueblos.html>

Staff have requested that the Department's Tribal Liaison send a courtesy email to the environmental director or manager for the affected Tribes, Pueblos and Nations.

Timelines and methods for submitting public comments are specified in the *Table of Mandated Public Involvement Activities*. Final discharge permit documents will be available from the Bureau's contact identified in Element 2 of this PIP.

### **Postal Mailing or E-Mailing of Notices to Persons on the Facility-Specific Mailing List**

The Bureau solicits the names and contact information of interested parties with all public notices. The Bureau maintains those names on a Facility-Specific Mailing List and provides the individuals with information about regulatory activities for the facility. Individuals, organizations, and other interested parties are added to the mailing list as requested. All public notices will contain a statement directing interested individuals to contact the Bureau contact for this permit if they want to be added to the facility specific mailing list. The Department also maintains a more comprehensive list of persons requesting copies of all notices issued by the agency. Public notices will also contain a statement informing interested individuals that they can subscribe to this list by visiting <https://www.env.nm.gov/email-update-bulletins/>.

Other means of outreach such as fliers announcing public comment periods and/or public meetings or hearings may be posted in locations throughout the community (e.g., local businesses, schools, libraries) and on the Department's website, at the Bureau's discretion after consideration of public interest and input.

### **Attachments**

The following documents are attached to this PIP:

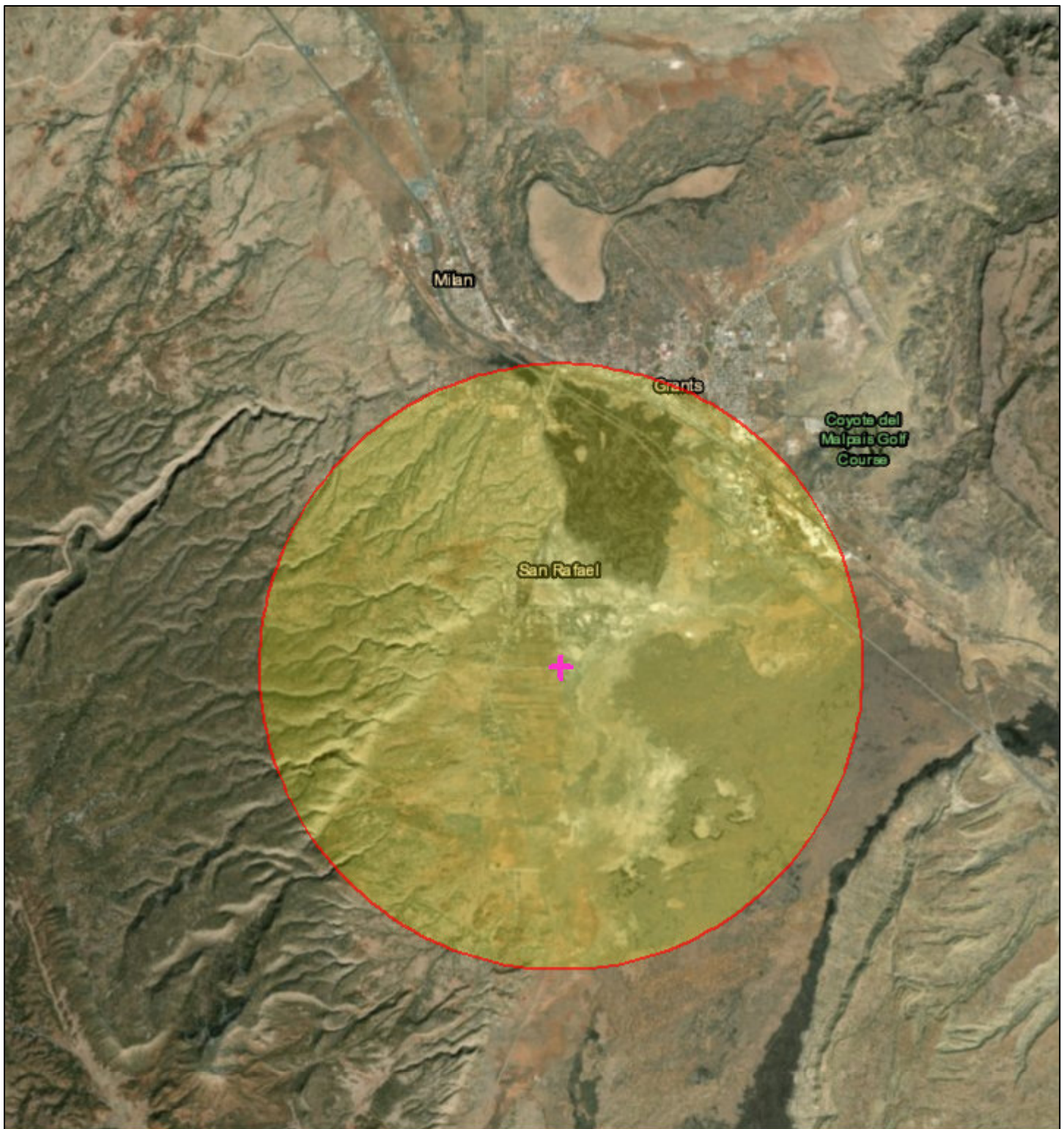
- A copy of the EJSCREEN ACS Summary Report, and a map showing the area evaluated
- A copy of the public notice with facility and permit specific information in all published languages
- LEP Assessment

**Table of Mandated Public Involvement Activities**

Activity	Dates
<p>Application Notice (PN-1): The first notice of the Bureau's receipt of the permit application – applicant's obligations at 20.6.2.3108.B – Bureau's obligations at 20.6.2.3108.E NMAC</p> <ul style="list-style-type: none"> <li>• Newspaper ads (English and Spanish)- Applicant obligation</li> <li>• NMED website <a href="https://www.env.nm.gov/gwqb/public-notice/">https://www.env.nm.gov/gwqb/public-notice/</a></li> <li>• Notice to government agencies</li> <li>• Notice to interested parties</li> </ul>	<p>Within 30 days of the department deeming the application administratively complete</p>
<p>Permit Notice (PN-2): Notice to the public of the availability of a draft permit for a 30-day review and comment period – the notice will outline the process for requesting a public hearing – obligation at 20.6.2.3108.H NMAC</p> <ul style="list-style-type: none"> <li>• NMED website <a href="https://www.env.nm.gov/gwqb/public-notice/">https://www.env.nm.gov/gwqb/public-notice/</a></li> <li>• Newspaper ads</li> <li>• Notification of interested parties</li> <li>• Notice to government agencies</li> <li>• Notice to Indian Tribes, Pueblos and Nations</li> </ul>	<p>Within 60 days of the department determining the application is technically complete and drafting a permit.</p>
<p>Public Hearing Notice (if required): Upon the Department's determination that there is substantial public interest in the permit – obligation at 20.6.2.3108.L NMAC. Notice includes information on how to participate in the hearing, and how to request an interpreter or auxiliary aid if needed.</p> <ul style="list-style-type: none"> <li>• NMED website <a href="https://www.env.nm.gov/gwqb/public-notice/">https://www.env.nm.gov/gwqb/public-notice/</a></li> <li>• Newspapers</li> <li>• Notice to interested parties</li> <li>• Notice to government agencies</li> <li>• Notice to Indian Tribes, Pueblos and Nations</li> </ul>	<p>Notice of the hearing shall occur at least 30 days prior to the hearing.</p>





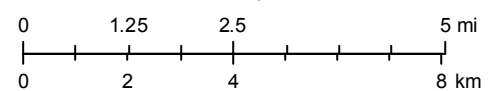
# San Rafael Water and Sanitation District (DP-58)



July 11, 2018

1:144,448

-  Buffer Area
-  Digitized Point



Esri, HERE, Garmin, © OpenStreetMap contributors, and the GIS user community  
Source: Esri, DigitalGlobe, GeoEye, Earthstar Geographics, CNES/Airbus  
DS, USDA, USGS, AeroGRID, IGN, and the GIS User Community

Location: User-specified point center at 35.098857, -107.871102

Ring (buffer): 4-mile radius

Description:

Summary of ACS Estimates		2011 - 2015	
Population		2,416	
Population Density (per sq. mile)		75	
Minority Population		1,682	
% Minority		70%	
Households		797	
Housing Units		1,073	
Housing Units Built Before 1950		115	
Per Capita Income		18,715	
Land Area (sq. miles) (Source: SF1)		32.40	
% Land Area		100%	
Water Area (sq. miles) (Source: SF1)		0.01	
% Water Area		0%	
	2011 - 2015 ACS Estimates	Percent	MOE (±)
<b>Population by Race</b>			
Total	2,416	100%	489
Population Reporting One Race	2,298	95%	1,094
White	1,594	66%	392
Black	12	1%	63
American Indian	313	13%	304
Asian	1	0%	45
Pacific Islander	4	0%	12
Some Other Race	374	15%	278
Population Reporting Two or More Races	118	5%	104
Total Hispanic Population	1,356	56%	375
Total Non-Hispanic Population	1,061		
White Alone	734	30%	258
Black Alone	11	0%	55
American Indian Alone	232	10%	270
Non-Hispanic Asian Alone	1	0%	45
Pacific Islander Alone	4	0%	12
Other Race Alone	1	0%	78
Two or More Races Alone	78	3%	104
<b>Population by Sex</b>			
Male	1,273	53%	343
Female	1,143	47%	236
<b>Population by Age</b>			
Age 0-4	164	7%	160
Age 0-17	482	20%	194
Age 18+	1,934	80%	273
Age 65+	317	13%	120

**Data Note:** Detail may not sum to totals due to rounding. Hispanic population can be of any race. N/A means not available.

**Source:** U.S. Census Bureau, American Community Survey (ACS) 2011 - 2015.

Location: User-specified point center at 35.098857, -107.871102

Ring (buffer): 4-mile radius

Description:

	2011 - 2015 ACS Estimates	Percent	MOE (±)
<b>Population 25+ by Educational Attainment</b>			
Total	1,779	100%	337
Less than 9th Grade	169	10%	114
9th - 12th Grade, No Diploma	205	12%	115
High School Graduate	690	39%	194
Some College, No Degree	548	31%	141
Associate Degree	108	6%	73
Bachelor's Degree or more	167	9%	94
<b>Population Age 5+ Years by Ability to Speak English</b>			
Total	2,253	100%	408
Speak only English	1,492	66%	291
Non-English at Home <sup>1+2+3+4</sup>	760	34%	257
<sup>1</sup> Speak English "very well"	506	22%	191
<sup>2</sup> Speak English "well"	179	8%	113
<sup>3</sup> Speak English "not well"	47	2%	108
<sup>4</sup> Speak English "not at all"	28	1%	53
<sup>3+4</sup> Speak English "less than well"	75	3%	118
<sup>2+3+4</sup> Speak English "less than very well"	254	11%	157
<b>Linguistically Isolated Households*</b>			
Total	55	100%	62
Speak Spanish	31	56%	32
Speak Other Indo-European Languages	23	41%	40
Speak Asian-Pacific Island Languages	1	2%	45
Speak Other Languages	0	0%	11
<b>Households by Household Income</b>			
Household Income Base	797	100%	146
< \$15,000	152	19%	76
\$15,000 - \$25,000	140	18%	72
\$25,000 - \$50,000	181	23%	113
\$50,000 - \$75,000	170	21%	83
\$75,000 +	154	19%	86
<b>Occupied Housing Units by Tenure</b>			
Total	797	100%	146
Owner Occupied	588	74%	136
Renter Occupied	210	26%	100
<b>Employed Population Age 16+ Years</b>			
Total	1,983	100%	337
In Labor Force	979	49%	271
Civilian Unemployed in Labor Force	46	2%	61
Not In Labor Force	1,004	51%	216

**Data Note:** Detail may not sum to totals due to rounding. Hispanic population can be of any race. N/A means not available. **Source:** U.S. Census Bureau, American Community Survey (ACS) 2011 - 2015.

\*Households in which no one 14 and over speaks English "very well" or speaks English only.

# EJSCREEN ACS Summary Report



Location: User-specified point center at 35.098857, -107.871102

Ring (buffer): 4-mile radius

Description:

	2011 - 2015 ACS Estimates	Percent	MOE (±)
<b>Population by Language Spoken at Home*</b>			
Total (persons age 5 and above)	2,253	100%	408
English	N/A	N/A	N/A
Spanish	N/A	N/A	N/A
French	N/A	N/A	N/A
French Creole	N/A	N/A	N/A
Italian	N/A	N/A	N/A
Portuguese	N/A	N/A	N/A
German	N/A	N/A	N/A
Yiddish	N/A	N/A	N/A
Other West Germanic	N/A	N/A	N/A
Scandinavian	N/A	N/A	N/A
Greek	N/A	N/A	N/A
Russian	N/A	N/A	N/A
Polish	N/A	N/A	N/A
Serbo-Croatian	N/A	N/A	N/A
Other Slavic	N/A	N/A	N/A
Armenian	N/A	N/A	N/A
Persian	N/A	N/A	N/A
Gujarathi	N/A	N/A	N/A
Hindi	N/A	N/A	N/A
Urdu	N/A	N/A	N/A
Other Indic	N/A	N/A	N/A
Other Indo-European	N/A	N/A	N/A
Chinese	N/A	N/A	N/A
Japanese	N/A	N/A	N/A
Korean	N/A	N/A	N/A
Mon-Khmer, Cambodian	N/A	N/A	N/A
Hmong	N/A	N/A	N/A
Thai	N/A	N/A	N/A
Laotian	N/A	N/A	N/A
Vietnamese	N/A	N/A	N/A
Other Asian	N/A	N/A	N/A
Tagalog	N/A	N/A	N/A
Other Pacific Island	N/A	N/A	N/A
Navajo	N/A	N/A	N/A
Other Native American	N/A	N/A	N/A
Hungarian	N/A	N/A	N/A
Arabic	N/A	N/A	N/A
Hebrew	N/A	N/A	N/A
African	N/A	N/A	N/A
Other and non-specified	N/A	N/A	N/A
Total Non-English	N/A	N/A	N/A

**Data Note:** Detail may not sum to totals due to rounding. Hispanic population can be of any race. N/A means not available. **Source:** U.S. Census Bureau, American Community Survey (ACS) 2011 - 2015.

\*Population by Language Spoken at Home is available at the census tract summary level and up.

Location: Tract: 35006974700,35006974201,35006974400

Ring (buffer): 0-mile radius

Description:

Summary of ACS Estimates		2011 - 2015	
Population		15,149	
Population Density (per sq. mile)		5	
Minority Population		10,674	
% Minority		70%	
Households		4,864	
Housing Units		6,350	
Housing Units Built Before 1950		486	
Per Capita Income		16,536	
Land Area (sq. miles) (Source: SF1)		2,851.53	
% Land Area		100%	
Water Area (sq. miles) (Source: SF1)		1.60	
% Water Area		0%	
	2011 - 2015 ACS Estimates	Percent	MOE (±)
<b>Population by Race</b>			
Total	15,149	100%	544
Population Reporting One Race	14,568	96%	1,444
White	9,693	64%	515
Black	209	1%	95
American Indian	2,337	15%	410
Asian	106	1%	60
Pacific Islander	13	0%	12
Some Other Race	2,210	15%	352
Population Reporting Two or More Races	581	4%	154
Total Hispanic Population	8,226	54%	490
Total Non-Hispanic Population	6,923		
White Alone	4,475	30%	359
Black Alone	187	1%	95
American Indian Alone	1,919	13%	340
Non-Hispanic Asian Alone	98	1%	60
Pacific Islander Alone	13	0%	12
Other Race Alone	0	0%	16
Two or More Races Alone	231	2%	146
<b>Population by Sex</b>			
Male	7,950	52%	421
Female	7,199	48%	328
<b>Population by Age</b>			
Age 0-4	916	6%	187
Age 0-17	3,534	23%	281
Age 18+	11,615	77%	500
Age 65+	2,276	15%	219

**Data Note:** Detail may not sum to totals due to rounding. Hispanic population can be of any race. N/A means not available.

**Source:** U.S. Census Bureau, American Community Survey (ACS) 2011 - 2015.



Location: Tract: 35006974700,35006974201,35006974400

Ring (buffer): 0-mile radius

Description:

	2011 - 2015 ACS Estimates	Percent	MOE (±)
<b>Population 25+ by Educational Attainment</b>			
Total	10,194	100%	360
Less than 9th Grade	821	8%	166
9th - 12th Grade, No Diploma	1,411	14%	169
High School Graduate	3,513	34%	272
Some College, No Degree	3,189	31%	264
Associate Degree	946	9%	174
Bachelor's Degree or more	1,260	12%	190
<b>Population Age 5+ Years by Ability to Speak English</b>			
Total	14,233	100%	502
Speak only English	8,924	63%	459
Non-English at Home <sup>1+2+3+4</sup>	5,309	37%	363
<sup>1</sup> Speak English "very well"	3,809	27%	330
<sup>2</sup> Speak English "well"	787	6%	141
<sup>3</sup> Speak English "not well"	423	3%	117
<sup>4</sup> Speak English "not at all"	290	2%	89
<sup>3+4</sup> Speak English "less than well"	713	5%	142
<sup>2+3+4</sup> Speak English "less than very well"	1,500	11%	199
<b>Linguistically Isolated Households*</b>			
Total	314	100%	106
Speak Spanish	189	60%	86
Speak Other Indo-European Languages	58	18%	42
Speak Asian-Pacific Island Languages	58	18%	45
Speak Other Languages	9	3%	16
<b>Households by Household Income</b>			
Household Income Base	4,864	100%	167
< \$15,000	904	19%	120
\$15,000 - \$25,000	935	19%	151
\$25,000 - \$50,000	1,405	29%	206
\$50,000 - \$75,000	730	15%	127
\$75,000 +	890	18%	168
<b>Occupied Housing Units by Tenure</b>			
Total	4,864	100%	167
Owner Occupied	3,517	72%	178
Renter Occupied	1,347	28%	171
<b>Employed Population Age 16+ Years</b>			
Total	11,993	100%	442
In Labor Force	5,646	47%	411
Civilian Unemployed in Labor Force	450	4%	90
Not In Labor Force	6,347	53%	393

**Data Note:** Detail may not sum to totals due to rounding. Hispanic population can be of any race. N/A means not available. **Source:** U.S. Census Bureau, American Community Survey (ACS) 2011 - 2015.

\*Households in which no one 14 and over speaks English "very well" or speaks English only.

# EJSCREEN ACS Summary Report



Location: Tract: 35006974700,35006974201,35006974400

Ring (buffer): 0-mile radius

Description:

	2011 - 2015 ACS Estimates	Percent	MOE (±)
<b>Population by Language Spoken at Home*</b>			
Total (persons age 5 and above)	14,233	100%	502
English	8,924	63%	481
Spanish	4,106	29%	363
French	46	0%	42
French Creole	0	0%	16
Italian	1	0%	16
Portuguese	0	0%	16
German	46	0%	37
Yiddish	0	0%	16
Other West Germanic	0	0%	16
Scandinavian	0	0%	16
Greek	0	0%	16
Russian	0	0%	16
Polish	10	0%	18
Serbo-Croatian	0	0%	16
Other Slavic	0	0%	16
Armenian	0	0%	16
Persian	0	0%	16
Gujarathi	0	0%	16
Hindi	0	0%	16
Urdu	0	0%	16
Other Indic	0	0%	16
Other Indo-European	0	0%	16
Chinese	0	0%	16
Japanese	57	0%	60
Korean	5	0%	16
Mon-Khmer, Cambodian	28	0%	45
Hmong	0	0%	16
Thai	0	0%	16
Laotian	0	0%	16
Vietnamese	0	0%	16
Other Asian	1	0%	16
Tagalog	30	0%	42
Other Pacific Island	13	0%	12
Navajo	654	5%	174
Other Native American	312	2%	184
Hungarian	0	0%	16
Arabic	0	0%	16
Hebrew	0	0%	16
African	0	0%	16
Other and non-specified	0	0%	16
Total Non-English	5,309	37%	695

**Data Note:** Detail may not sum to totals due to rounding. Hispanic population can be of any race. N/A means not available. **Source:** U.S. Census Bureau, American Community Survey (ACS) 2011 - 2015.

\*Population by Language Spoken at Home is available at the census tract summary level and up.



Notice is hereby given pursuant to 20.6.2.3108 NMAC, the following Groundwater Discharge Permit applications have been submitted to the New Mexico Environment Department (NMED) for review.

DP #	Facility/Applicant	Closest City	County	Notice	NMED Permit Contact
1337	Ritchie Bros. Auctioneers (America), Inc.  Vic Pospiech Director, EHS Ritchie Bros. Auctioneers (America), Inc. 4000 Pine Lake Road Lincoln, NE 68516	Albuquerque	Bernalillo	DP-1337 - Ritchie Bros. Auctioneers (America), Inc.: David Fogarty, Director, EHS, proposes to renew the Discharge Permit for the discharge of up to 4,350 gallons per day of industrial wastewater from a heavy equipment refurbishing facility to a treatment and disposal system. Potential contaminants from this type of discharge include organic compounds, total dissolved solids, and metals. The facility is located at 13510 Central Avenue SW, Albuquerque, in the Town of Atrisco Grant, Sections 26 and 35 (projected), T10N, R01E, Bernalillo County. Groundwater beneath the site is at a depth of approximately 778 to 874 feet and has a total dissolved solids concentration of approximately 410 milligrams per liter.	Kellie Jones <a href="mailto:Kellie.Jones@state.nm.us">Kellie.Jones@state.nm.us</a>
58	San Rafael Water and Sanitation District  Salvador Marez, Chairman San Rafael Water and Sanitation District PO Box 99 San Rafael, NM 87051	San Rafael	Cibola	DP-58 - San Rafael Water and Sanitation District: Salvador Marez, Chairman, proposes to renew the Discharge Permit for the discharge of up to 40,425 gallons per day of domestic wastewater to a treatment and disposal system. Potential contaminants from this type of discharge include nitrogen compounds. The facility is located at 419-A Ice Cave Road, San Rafael, in Section 14, T10N, R10W, Cibola County. Groundwater beneath the site is at a depth of approximately 19 feet and has a total dissolved solids concentration of approximately 30,000 milligrams per liter.	Andrew Romero <a href="mailto:AndrewC.Romero@state.nm.us">AndrewC.Romero@state.nm.us</a>





Provided the applicant has met applicable requirements, the New Mexico Environment Department (NMED) will propose for approval a Discharge Permit containing limitations, monitoring requirements, and other conditions intended to protect groundwater quality for present and potential future use. Information in this public notice was provided by the applicants and will be verified by NMED during the permit application review process. NMED will accept comments and statements of interest regarding applications and will create facility-specific mailing lists for persons who wish to receive future notices. Questions, comments or statements of interest should be directed to the NMED permit contact at (505) 827-2900 or at the following address: Ground Water Quality Bureau, PO Box 5469, Santa Fe, NM 87502-5469.

NMED does not discriminate on the basis of race, color, national origin, disability, age or sex in the administration of its programs or activities, as required by applicable laws and regulations. NMED is responsible for coordination of compliance efforts and receipt of inquiries concerning non-discrimination requirements implemented by 40 C.F.R. Part 7, including Title VI of the Civil Rights Act of 1964, as amended; Section 504 of the Rehabilitation Act of 1973; the Age Discrimination Act of 1975, Title IX of the Education Amendments of 1972, and Section 13 of the Federal Water Pollution Control Act Amendments of 1972. If you have any questions about this notice or any of NMED's non-discrimination programs, policies or procedures, you may contact: Kristine Pintado, Non-Discrimination Coordinator, New Mexico Environment Department, 1190 St. Francis Dr., Suite N4050, P.O. Box 5469, Santa Fe, NM 87502, (505) 827-2855, [nd.coordinator@state.nm.us](mailto:nd.coordinator@state.nm.us). If you believe that you have been discriminated against with respect to a NMED program or activity, you may contact the Non-Discrimination Coordinator identified above or visit our website at <https://www.env.nm.gov/non-employee-discrimination-complaint-page/> to learn how and where to file a complaint of discrimination.

El Departamento del Medio Ambiente de Nuevo México (NMED, por su sigla en inglés) no discrimina por motivos de raza, color, origen nacional, discapacidad, edad o sexo en la administración de sus programas o actividades, según lo exigido por las leyes y los reglamentos correspondientes. El NMED es responsable de la coordinación de esfuerzos para el cumplimiento de las reglas y la recepción de indagaciones relativas a los requisitos de no discriminación implementados por 40 C.F.R. Parte 7, que incluye el Título VI de la Ley de Derechos Civiles de 1964, como fuera enmendado; la Sección 504 de la Ley de Rehabilitación de 1973; la Ley de Discriminación por Edad de 1975; el Título IX de las Enmiendas de Educación de 1972; y la Sección 13 de las Enmiendas a la Ley Federal de Control de la Contaminación del Agua de 1972. Si tiene preguntas sobre este aviso o sobre cualquier programa de no discriminación, norma o procedimiento de NMED, puede comunicarse con la Coordinadora de No Discriminación: Kristine Pintado, Non-Discrimination Coordinator, New Mexico Environment Department, 1190 St. Francis Dr., Suite N4050, P.O. Box 5469, Santa Fe, NM 87502, (505) 827-2855, [nd.coordinator@state.nm.us](mailto:nd.coordinator@state.nm.us). Si piensa que ha sido discriminado con respecto a un programa o actividad de NMED, puede comunicarse con la Coordinadora de No Discriminación antes indicada o visitar nuestro sitio web en <https://www.env.nm.gov/non-employee-discrimination-complaint-page/> para saber cómo y dónde presentar una queja por discriminación.

## Limited English Proficiency (LEP) Assessment

**Facility:** San Rafael Water and Sanitation District  
**Location:** 419-A Ice Cave Road, San Rafael, NM 87051  
**Regulatory Action:** Discharge Permit Renewal  
**Buffer Distance:** 4-mile radius (i.e., area evaluated or Community of Concern)  
**Date:** August 3, 2018

---

### **Factor 1: The Number and Proportion of LEP Individuals Eligible to be Served or Likely to be Encountered in Community of Concern**

See Public Involvement Plan (PIP), Table of EJSCREEN Results for the Affected Community.

#### Conclusions:

1. The number of LEP individuals (persons over the age of 5 who speak English “less than very well” in the affected community) is 254.
2. The proportion of LEP individuals in the affected community is 11%.
3. The percentage of linguistically isolated households is 6.9%, which is somewhat greater than the statewide average.
4. Spanish and Navajo are the predominant non-English languages spoken by LEP persons.
5. Historical participation: The Bureau maintains a facility-specific mailing list. The current mailing list for the facility includes 0 persons. A review of the administrative record for this facility indicates limited public interest/participation overall during the past 10 years. The review found no record of participation by the LEP community.

### **Factor 2: Frequency with which LEP Individuals Might Come in Contact with the Program**

Public contact with the discharge permitting process primarily occurs when a permit application is under review. The GWQB provides notice to the public and encourages participation. Individuals may participate by requesting information, submitting comments on draft permits, requesting hearings, and taking part in hearings. Some permits generate considerable public interest, but participation is low for most permits. Historical participation in permitting activities for this facility is summarized under Factor 1.

#### Conclusion:

LEP participation and overall public interest in this facility have been limited historically. Based on this record, the Bureau considers the potential for LEP contact with the permitting process to be “infrequent.”

### **Factor 3: Nature and Importance of the Activity or Service Provided by the Program**

The permitting activity is deemed by the GWQB to be "important" to NMED, the impacted community, and the State of New Mexico. The permitting activity is important to NMED because the permit establishes site-specific requirements that must be met to ensure protection of public health and groundwater quality and provides a means to enforce those requirements. The permitting activity is important to the impacted community because poorly-operated waste treatment facilities have the potential to pose a public nuisance and adversely affect the quality of life of people living in the vicinity of the facility. The permitting activity is important to the State of New Mexico because establishment of effective permits ensures that discharges will not impact the State's limited groundwater resources and that waste disposal is conducted in a consistent manner throughout the State.

#### Conclusion:

The GWQB considers the permitting activity "important" to NMED, to the state as a whole, and to the impacted community.

### **Factor 4: Resources Available to NMED for LEP Services and Associated Costs**

For outreach to LEP communities associated with this permit action, NMED employs an in-house Spanish translator/interpreter and utilizes a phone interpretation service to assist during direct communication between LEP individuals and NMED staff. The costs of newspaper publication of public notice in [language] and of interpretive services for a public meeting or hearing are being incorporated into the Bureau's budget, to the extent possible. Fees collected from the permittee in accordance with the schedule at 20.6.2.3114 NMAC are not sufficient to cover these costs.

#### Conclusion:

The Bureau can accommodate the costs of the LEP services identified in this plan. If additional services are requested, the budgetary implications will be reviewed.

### **LEP Services Plan:**

The Bureau plans to:

1. Translate the Public Notice Two and any subsequent public notices into Spanish and publish in a paper serving the local community and broadcast on a radio station serving the Navajo-speaking community.
2. Provide interpretive services at any public meeting or public hearing, if requested.
3. Interact with members of the LEP community using certified interpreters, when needed.

The Bureau will consider requests from members of the affected community for additional LEP services.