



Requirements for Small Systems

WHO DOES THIS FACTSHEET APPLY TO?

ALL PUBLIC WATER SYSTEMS (PWSs), REGARDLESS OF SOURCE, THAT COLLECT 40 SAMPLES OR FEWER PER MONTH.

RTCR

What to Do?

Step 1

Develop/update your sample siting plan.

Step 2

Collect your drinking water samples.

Step 3

Conduct required actions.



Additional RTCR Factsheets:

- Requirements for Seasonal Systems
- Repeat Monitoring Requirements for Small Systems
- Level 1 & Level 2 Assessments and Corrective Actions

ATTENTION!

- ✓ Are you a PWS? Contact NMED-DWB at **1-877-654-8720**.

STEP 1: DEVELOP/UPDATE YOUR SAMPLE SITING PLAN*

Contact NMED DWB for assistance.

- **DEVELOP A SAMPLE SITING PLAN. I**
 - **LIST THE LOCATIONS WHERE YOU WILL TAKE YOUR SAMPLES (ROUTINE AND REPEAT):** GWR triggered source water monitoring locations must be included. GWR triggered source water samples **will not** count toward any required RTCR repeat sampling
 - **INCLUDE YOUR ROUTINE COLLECTION SCHEDULE:** For example, “ABC Water System will collect one routine total coliform sample every first Monday of the calendar month.”
 - **UPDATE TO REFLECT CHANGES AT YOUR PWS:** The sample siting plan is a living document and should be updated to reflect changes at your PWS such as: major changes in population; a new or additional water source; infrastructure changes, such as a change in the distribution system (i.e. extended/abandoned lines) or pressure zones; or changes in disinfection or other treatment.

STEP 2: COLLECT YOUR DRINKING WATER SAMPLES

Know your RTCR routine sampling requirements.

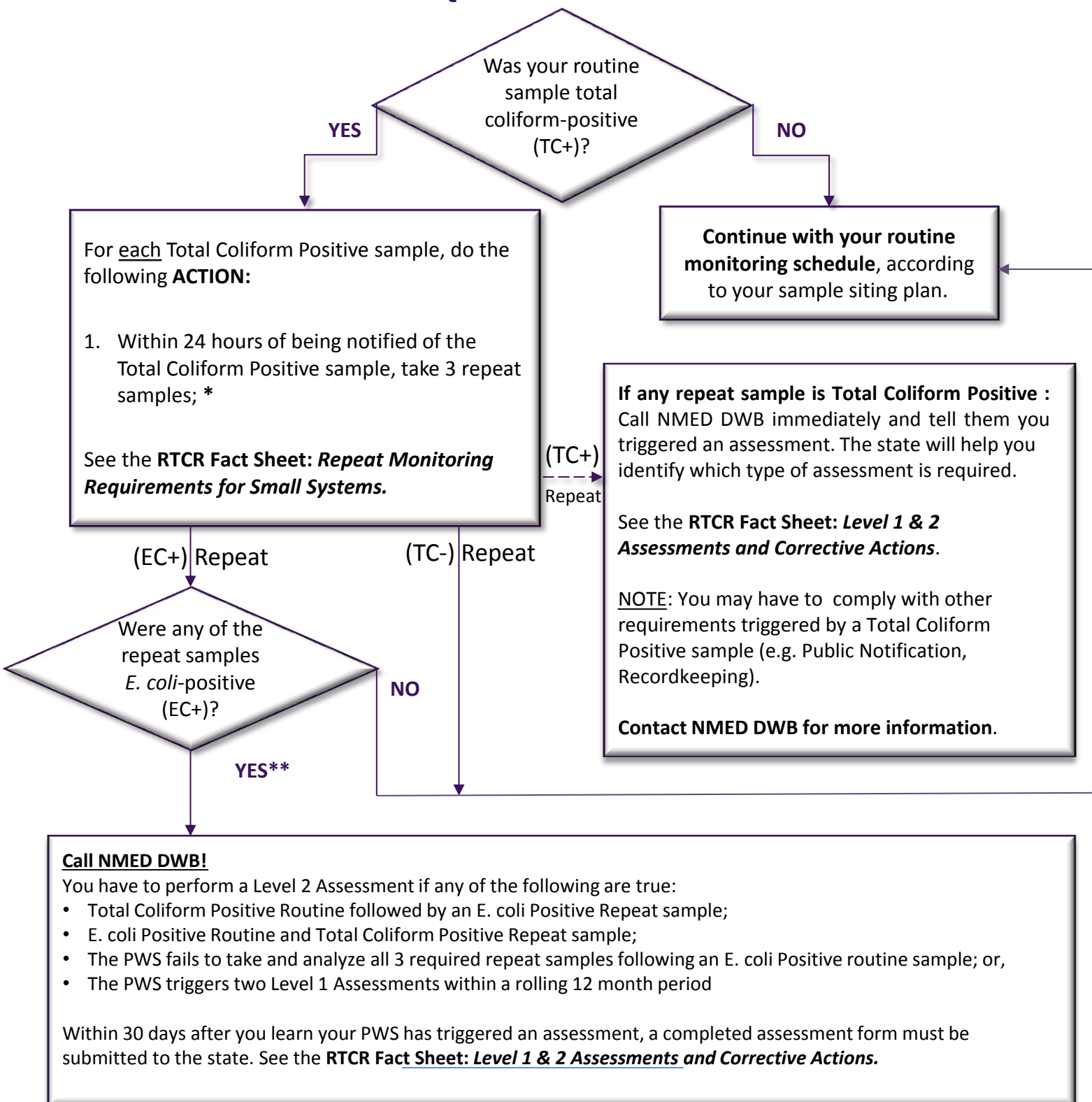
- **COLLECT AT LEAST ONE 100 ML** routine drinking water sample every calendar month.
- **IMMEDIATELY SEND YOUR SAMPLE TO A STATE-CERTIFIED LAB** that performs total coliform drinking water analyses.
 - Remember the lab must begin analyzing the drinking water sample no later than the 30th hour from the collection time.
 - If necessary, ship the sample overnight and refrigerate or ice the sample using “blue” ice (cooled to about 4° to 10° C).

NOTE

- * The sample siting plan is subject to review and approval by the New Mexico Environment Department’s Drinking Water Bureau. Revisions by the water system may be required.



STEP 3: CONDUCT ACTIONS REQUIRED AS A RESULT OF YOUR SAMPLING



NOTES

* If you are missing any routine or repeat sample, contact NMED DWB.

** Call NMED DWB on the same day you learn of the E. coli Positive result, or by the end of the next business day and tell them you received an E. coli Positive result.