



# NMED Public Participation Policy Policy 07-13

## Public Involvement Plan for Notice of a Remediation Plan

Springer Auto Company  
501 Fourth Street  
Springer, New Mexico 87747

Facility ID #30735  
Release ID #1321

Approved: Lorena Goerger

Digitally signed by Lorena Goerger  
Date: 2022.03.15 16:39:59 -06'00'

Date: 03/15/2022

Lorena Goerger  
Acting Bureau Chief, Petroleum Storage Tank Bureau

Petroleum Storage Tank Bureau  
March 15, 2022

## 1. Public Involvement Plan (PIP) Overview

The New Mexico Environment Department (“NMED” or “Department”), Petroleum Storage Tank Bureau (“PSTB” or “Bureau”) developed this Public Involvement Plan (“PIP”) for the Remediation Plan review for the Springer Auto Company site located at 501 Fourth Street, Springer, New Mexico.

The PSTB has developed this PIP to provide public participation opportunities and information to facilitate the public’s participation in the remediation planning process related to this site.

This PIP integrates information about the community and identifies resources needed by the PSTB to successfully incorporate community participation activities into the decision-making process for the Remediation Plan. The PIP identifies the PSTB staff and resources needed to accomplish these activities.

The remediation planning process may require public participation throughout different stages. The PSTB will meet the public participation requirements for the planning process by following this PIP, which includes all applicable policy, regulatory and statutory public notice and participation requirements.

In developing this PIP, community participation needs at the site were assessed to ensure appropriate promotion of public outreach is conducted by identifying whether there is a combination of environmental and demographic factors (i.e., low income community, minority community, limited English proficiency individuals, Linguistically Isolated Households, etc.) that may affect public participation (refer to Element 4 of this PIP). This assessment identifies community outreach needs and provides for public access opportunities above and beyond statutorily mandated requirements and underscores the provision of adequate public access to information about the remediation planning process.

As much as possible, public participation and informational activities related to the remediation planning process will be held within the timelines outlined in the table below. This timeline is tentative and subject to change; activities subject to statutory or regulatory deadlines are noted.

In the timeline for this remediation planning process, public comments may be submitted to the PSTB prior to the PSTB’s determination that the Final Remediation Plan is acceptable. Upon a determination that the Final Remediation Plan is acceptable, the PSTB will implement the Final Remediation Plan.

The Springer Auto Company site is in Springer , New Mexico in an area that has a relatively large community of Spanish speakers. Therefore, the PSTB will provide information in both English and Spanish.

As deemed necessary based on knowledge of the surrounding community, arrangements may be made for translation services. At any time during the planning process, the Remediation Plan and relevant documents may be reviewed at either of the repositories listed.

Activity	Dates
Posting of PIP (PSTB website and office)	March 16, 2022
Public Comment Period for PIP	Ongoing
PIP Revision	As necessary
Posting of Revised PIP	Within 21 days of receipt of substantial comment
Public Notice of Planned Submission of Draft Final Remediation Plan	July 15, 2022
Submittal of Draft Final Remediation Plan	July 15, 2022
Posting of Draft Final Remediation Plan (PSTB website and office), Public Comment Period Begins	July 15, 2022
Second Public Notice of Submission of Draft Final Remediation Plan and posting of a notice at the site	July 22, 2022
Mailing public notice to adjacent property owners by certified mail	July 22, 2022
Post signs at the facility and public notice flyer off-site, mail a public notice flyer to site owner and property owners within 1/3 mile, and place a display ad in local newspaper	TBD (Within 30 days of receiving administrative completeness determination letter from Ground Water Quality Bureau)
Public Comment Period for Draft Final Remediation Plan ends	August 5, 2022
Incorporation of Comments and Preparation of Final Remediation Plan	TBD

More detailed information about planned PSTB outreach is available in this PIP.

The Chief of the PSTB provides final approval of the PIP and substantial amendments. This PIP is a “living” document that may be amended after considering public comments and feedback.

## 2. Contacts

Bureau contact for this PIP and the Remediation Plan is:

Mr. Michael Leger  
Project Manager  
NMED Petroleum Storage Tank Bureau  
121 Tijeras Avenue, Suite 1000  
Albuquerque, New Mexico 87102

Phone: 1 (505) 372-8337  
Email: [michael.leger@state.nm.us](mailto:michael.leger@state.nm.us)

### ***Non-English Language Speaker Assistance and Accommodations***

The Bureau's contractor will include information about how non-English speakers or readers may call the PSTB contact listed in this PIP and request language assistance services, such as an interpreter, so they can learn more about the planning process. Services may be arranged for translation of documents, for interpreters, and for obtaining services for persons with disabilities. A phone-based interpretation service is available for languages other than English.

Persons requiring non-English Language Speaker Assistance, assistance for an interpreter or auxiliary aid (e.g., accommodations for persons who are disabled) to participate in the planning process will be directed to the PSTB contact listed above, and if possible, allow at least 14 days prior to the end of the comment review period.

The New Mexico Relay Network numbers will also be provided in public notices for the hearing or speech impaired: 1-800-659-1779 (voice) and 1-800-659-8331 (TTY users).

### ***Department Websites***

New Mexico Environment Department - <https://www.env.nm.gov/>

Petroleum Storage Tank Bureau - [https://www.env.nm.gov/petroleum\\_storage\\_tank/](https://www.env.nm.gov/petroleum_storage_tank/)

## **3. Regulatory Framework for Public Participation**

There are existing federal and state laws governing the management of petroleum hydrocarbon releases and discharges to groundwater. The United States Congress enacted the Resource Conservation and Recovery Act (RCRA), an amendment to the Solid Waste Disposal Act, in 1976 to ensure safe management and disposal of household, municipal and industrial waste generated nationwide. 42 U.S.C. § 6901 *et. seq.*, 42 U.S.C. § 6921 *et. seq.*

In 1984, Congress added Subtitle I to the Solid Waste Disposal Act, which required the U.S. Environmental Protection Agency ("EPA") to develop a comprehensive regulatory program for Underground Storage Tank ("UST") systems storing petroleum or certain hazardous substances to protect the environment and human health from UST releases. 42 U.S.C. §6991 *et. seq.* In 1988, the EPA promulgated the UST regulations (40 CFR Part 280) and the regulations for state program approval ("SPA") (40 CFR Part 281). SPA delegates the primary responsibility of implementing the federal UST program to individual states in lieu of the EPA. NMED PSTB currently has SPA from EPA.

New Mexico's Petroleum Storage Tank regulations, 20.5 NMAC, are promulgated pursuant to the provisions of the Hazardous Waste Act, Sections 74-4-1 through 74-4-14 NMSA 1978; the

Ground Water Protection Act, Sections 74-6B-1 through 74-6B-14 NMSA 1978; and the general provisions of the Environmental Improvement Act, Sections 74-1-1 through 74-1-17 NMSA 1978.

Owners and operators (responsible parties) of petroleum storage tanks where a release has occurred which requires a Final Remediation Plan shall develop a Final Remediation Plan including a public notice satisfying the requirements of paragraph (10) of subsection D of 20.5.119.1923 NMAC and subsection B of 20.5.119.1928 NMAC. For state lead sites, the NMED contractor will develop and implement the Final Remediation Plan.

The Department may provide for public participation in the review process as the Department deems appropriate or for public meetings when there is significant public interest as provided for in subsection D of 20.5.119.1924 NMAC. If an informal public meeting, public hearing or other form of public participation is conducted, the Department may postpone its decision on the Remediation Plan until after a public hearing or meeting is held and a determination is made. Any public hearing or meeting that is held due to significant public interest shall be held within 60 days of determining that there is significant public interest.

A groundwater discharge permit is required for the remediation of this site. PSTB will carry out the public notice requirements for that permit in accordance with 20.6.2.3108 NMAC of the New Mexico Ground and Surface Water Protection Regulations promulgated pursuant to the Water Quality Act, NMSA 1978, Sections 74-6-1 through 74-6-17

### ***Facility Background***

The Springer Auto Company site is located at 501 Fourth Street in Springer, New Mexico. The site appears to have operated as an auto sales and service business beginning in the early 1940's and is currently vacant. Two underground storage tanks of unknown size were reportedly removed in the early 1970's and were replaced with two 1,000-gallon steel UST's. These underground storage tanks were removed on June 8, 1992, at which time two holes were observed on the bottom of Tank #1. The release was confirmed as a result of this observation and approximately 25 cubic yards of contaminated soil was removed and stockpiled prior to backfilling. The discovery of petroleum hydrocarbon contamination of the shallow aquifer after the tanks were excavated prompted the New Mexico Environment Department to initiate enforcement action.

The Cimarron River is located approximately 160 meters west of the site, the City Reservoir is located approximately 2.25 miles northwest of the site, the Burlington Northern Santa Fe Railway is approximately ¼ mile east of the site, and the Canadian River is approximately 4.5 miles east of the site. Commercial and residential properties are interspersed throughout the entire area. Subsurface geology consists of silty sand from surface to 4 feet below ground surface (bgs), sandy gravel from 4 feet to 9 feet bgs, and shales from 9 feet to at least 21 feet bgs. Average depth to water is approximately 8.27 feet bgs as reported on May 18, 2021. Groundwater flow is estimated to be to the southwest with a hydraulic gradient of approximately 0.015 ft/ft.

Investigation and remediation activities have taken place at the Site since the early 1990's, when petroleum hydrocarbon contamination was detected in groundwater at the site. Groundwater monitoring events that have been conducted indicate that contaminant concentrations have

decreased over time. Although contaminant concentrations have decreased over time, the most recent groundwater monitoring event on May 18, 2021 indicated that one well exhibited benzene concentrations above regulatory standards, one well exhibited naphthalene concentrations above regulatory standards, and four wells exhibited dissolved manganese concentrations above regulatory standards.

The planned remediation consists of the injection of a controlled-release oxidant to reduce recalcitrant petroleum hydrocarbon contaminant concentrations in the groundwater to below New Mexico Water Quality Control Commission standards and facilitate a No Further Action Status at the site.

#### **4. Affected Communities, Stakeholders, and Governments**

To provide for adequate public participation opportunities and meaningful involvement of persons in the planning process and to address potential or existing environmental justice areas, the affected communities must first be identified, informed about proposed environmental actions affecting the community, and invited to share their comments and concerns. The EJSCREEN tool developed by the U.S. Environmental Protection Agency (EPA) helps identify communities that are low income and minority populations that may benefit from a variety of approaches for notification and outreach communication. This information is used to help encourage the community's involvement in the public process for environmental activities or actions. In this case, the activity is consideration of a Remediation Plan for a petroleum storage tank site.

Using the results of the EJSCREEN ACS Summary Report (see Attachment 1), there are 438 households within a 1-mile radius of the site (i.e., affected community). Sixty-six percent of the affected community are people of color, with Hispanic people accounting for 58%. Non-Hispanic people of color make 8% of the affected community, including 2% Black people, 4% Asian people, and 2% people reporting two or more races. Fifty-one percent of people within the 1-mile radius communicate in a language other than English (non-English) at home. The percent of linguistically isolated households is 9%. The per capita income for the affected community is \$21,617 as compared to the national per capita income of \$32,621. These results indicate that for the affected community, the percentage of Spanish language communication (26 percent) is considerable (i.e., similar to the state percentage and greater than the national percentage). Additionally, the EJ Screen report indicates that of the linguistically isolated households in the affected area, 70% speak Spanish.

It is important for the PSTB to consider the linguistic and communication needs of the affected community when providing notice of submission of Final Remediation Plans. Based on the EJSCREEN results and the Limited English Proficiency ("LEP") analysis (see Attachment 2), the PSTB will provide the same information in Spanish and English when conducting public outreach and participation activities, and when providing public notices and other announcements (brochures, signs, mailings, etc.) for the Springer Auto Company site. The PSTB will strive to make public participation efforts as inclusive as possible within PSTB budget and time limitations.

For example, as much as possible, mass communication methods will be used in addition to public notices in appropriate newspapers or mailings, as many residents in the affected community may not have regular access to newspapers or daily postal service and may rely on publicly posted notices. Informational flyers will be posted at the site (front of Springer Auto Company) that describe public information repositories and groundwater discharge. A public notice flyer with information related to the groundwater discharge will also be posted off-site at a location conspicuous to the public and approved by the Ground Water Quality Bureau (GWQB). The Environmental Protection Agency Region 6 is supplied electronic copies of all workplan approval letters and provided with electronic copies of documents submitted to PSTB. In addition, the public notice will be sent via electronic mail to the City of Springer and the Environmental Protection Agency Region 6 office.

## **5. Detailed Public Participation and Outreach Activities for Remediation Plan, Springer Auto Company**

The PSTB evaluates all public comments, places the comments in the administrative files for the remedial action, and incorporates public input into the PSTB's comments on Remediation Plans as appropriate.

The PSTB's plans for facilitating public participation in the remediation planning action for the Springer Auto Company site are detailed below.

### ***Public Notice Requirements per Applicable Laws***

The Petroleum Storage Tank Regulations, 20.5.119.1923.D (10) NMAC, as detailed below, address notices to be provided by the owner or operator (*for this state-lead site, the PSTB*) to the public regarding the submission of a draft Final Remediation Plan for public comment. This notice is provided prior to or on the day of the submission of the draft Final Remediation Plan and informs the public that the PSTB will be reviewing the Plan. The owner or operator (for this state-lead site, the PSTB) will provide notice of the submission of a draft Final Remediation Plan in English and Spanish, to include availability of language assistance services. Spanish-language notices will be translated from English into Spanish by a translator certified by the American Translators Association for English to Spanish translation.

The **bolded information in brackets** is responsive to the regulatory requirements *in italics* below.

*The owner/operator [for this state-lead site, the PSTB] is required to provide notice in the following manner:*

*(a) owners and operators [the PSTB] shall publish a legal notice of the submission or planned submission of the final remediation plan at least twice in a paper of general circulation [Legal*



**Section of the Classified Ads of the Springer World News]** in the county in which soil or water has been contaminated by the release; the first notice shall appear within one week of, but not later than, the day of submission of the final remediation plan to the department; the second publication of this notice shall occur no later than seven days after the date the remediation plan is submitted to the department, and owners and operators shall submit two certified affidavits of publication from the newspaper to the department within 21 days after the date the final remediation plan is submitted;

(b) the notice shall contain the information specified in this section including the following:

(i) a statement that a remediation plan has been submitted to the department proposing actions to remediate a release of petroleum products;

(ii) the name and physical address of the site at which the release occurred and the names and physical addresses of properties where any part of the remediation system will be located, using adequate identification of the properties, including street addresses if applicable [501 Fourth Street, Springer];

(iii) a statement that a copy of the remediation plan and all data and modeling related to the remediation plan, if applicable, can be viewed at the department's **[PSTB's]** main office **[located at 2905 Rodeo Park Drive East, Building 1, Santa Fe, New Mexico 87505]** and at the department's field office for the area in which the release occurred **[District 2 office located at 1277A South Second Street Raton, New Mexico 87740]**; and

(iv) a statement that public comments on the plan must be delivered, within 21 days of the publication of the second notice, to the owner or operator's assigned project manager **[Michael Leger]** at the Petroleum Storage Tank Bureau, New Mexico Environment Department, or a district office **[District 1 Albuquerque office located at 121 Tijeras Avenue NE, Suite 1000, Albuquerque, New Mexico 87102]** if approved by the department, and to the secretary of the environment department;

(c) within seven days of the date a remediation plan is submitted to the department, owners and operators **[the PSTB]** shall also mail by certified mail a copy of the legal notice **[in English and Spanish]** to adjacent property owners; and

(d) owners and operators **[the PSTB]** shall post a notice **[in English and Spanish]** of the submission of the remediation plan at the release site within seven days of the submission of the remediation plan; the notice shall contain the information specified in this subsection and shall be at least 8.5 inches by 11 inches in size and prominently displayed in a location where it is likely to be seen by members of the public for a continuous period until the remediation plan is approved and implemented; public comments must be received by the department within 21 days of the date of the second publication of the public notice;



20.6.2.3108 NMAC of the New Mexico Ground and Surface Water Protection Regulations requires that:

**Within 30 days** of the date when the US Postal Service first makes notice to PSTB of its possession of this letter, PSTB must provide public notice as follows:

**1. Post sign(s) at the facility.**

PSTB must provide and post a sign 2 x 3 feet in size (or multiple signs if required) **at or near the facility for 30 days** in a conspicuous location approved by NMED. The text for the poster and the approved sign posting location will be included in the letter from the Ground Water Quality Bureau (GWQB) notifying PSTB that the ground water discharge permit application is administratively complete.

**2. Post a public notice flyer off-site.**

PSTB must post the public notice flyer **off-site** at a location conspicuous to the public and approved by GWQB. The public notice flyer in English and Spanish and the location GWQB approves for its posting will be included in the GWQB administrative completeness letter.

**3. Mail a public notice flyer to property owners within 1/3 mile.**

PSTB must send a copy of the public notice flyer by 1st class mail to the owners of record of all properties within 1/3 mile from the boundary of the property where the discharge site is located. If there are no properties within 1/3 mile other than properties owned by the applicant, then the flyer must be mailed to the owners of record of the nearest adjacent properties. The names and addresses of property owners can be obtained from the county tax assessor's office. The list of property owners' names and addresses must be submitted to GWQB.

**4. Mail a public notice flyer to the owner of the discharge site.**

PSTB must send a copy of the public notice flyer via certified mail, return receipt requested, to the owner(s) of the discharge site(s). The list of owners' names and addresses, and the certified mail receipts must be submitted to GWQB.

**5. Place a display ad in the newspaper.**

PSTB must publish a display ad 3 x 4 inches for one day in a newspaper of general circulation in the location of the proposed discharge. The ad may **not** be placed in the classified or legal section. The text for the ad and the newspaper GWQB approves for publishing the ad will be included in the GWQB administrative completeness letter.

**PROOF OF NOTICE.**

**Within 15 days** of completing the above requirements, PSTB must submit the following items as proof of notice to GWQB:

- ✓ Affidavit regarding the sign posting and mailing (form will be enclosed in administrative completeness letter).
- ✓ List of names and addresses to whom the public notice flyer was mailed.
- ✓ List of names and addresses of owners of discharge sites.
- ✓ Certified mail receipts for mailing to discharge site owner(s), if required.
- ✓ Copy of newspaper ad.

***Proposed Public Participation and Outreach Activities for the Springer Auto Company Site***

The PSTB will also perform the following public participation and outreach activities during the review phase of the planning process for the Springer Auto Company site remediation:

1. **Information Repository:** A copy of the Remediation Plan and the PIP will be made available for public review at the PSTB's main office at **2905 Rodeo Park Drive East, Building 1, Santa Fe, New Mexico 87505** and at the NMED District 1 office at **121 Tijeras Avenue NE, Suite 1000, Albuquerque, New Mexico 87102**. In addition, the Remediation Plan, the PIP, and all applicable data may be viewed at the following website: <https://cloud.env.nm.gov/waste/?c=5949&k=0ccb1c7550>.
2. **Electronic Posting of Public Notice:** The PSTB will post the public notice and the PIP on the PSTB's portion of NMED's website: (<https://www.env.nm.gov/public-notices/>). Electronically-posted notices will be provided in English and Spanish.
3. **Language Assistance Services:** Non-English speakers or readers will be directed in notices to call the PSTB contact listed in this PIP and request language assistance services, such as an interpreter, so they can learn more about the planning process. Services may be arranged by the PSTB for translation of documents, for interpreters, and for obtaining services for persons with disabilities. A phone-based interpretation service is available to the PSTB for speakers of languages other than English.

***Attachment 1: Preliminary Screening (EJSCREEN)***

## Public Outreach Preliminary Screen (EJSCREEN)

**Facility:** Springer Auto Company  
 501 Fourth Street, Springe, New Mexico  
**Location:** 87747  
**Buffer:** 1-mile  
**Date:** October 29, 2021

Total population within 1-mile radius*:	828
Total population age 5+ years within 1-mile radius*:	799
Number of households within 1-mile radius*:	438
Per capita income within 1-mile radius*:	\$21,408
Per capita income, USA:	\$32,621
Percent people of color population within 1-mile radius*:	66%
Percent people of color population by race within 1-mile radius*:	
Hispanic:	58%
Black Alone:	2%
American Indian Alone:	0%
Non-Hispanic Asian Alone:	4%
Pacific Islander Alone:	0%
Other Race Alone:	0%
Two or More Races Alone:	2%
<i>Sum:</i>	66%
Percent linguistically isolated households within 1-mile radius**:	9%
Percent linguistically isolated households by language within 1-mile radius*:	
Spanish:	7%
Other Indo-European languages:	0%
Other Asian-Pacific Island languages:	30%
Other languages:	0%
<i>Sum:</i>	100%
Population age 5+ yrs. speaking English "less than very well" within 1-mile radius*:	13%

\*: From EJSCREEN ACS Summary Report

\*\* : 39 linguistically isolated households /438 total households X 100 = % linguistically isolated households. Detail may not sum to total due to rounding.



## EJSCREEN ACS Summary Report



Location: User-specified point center at 36.361356, -104.596898  
Ring (buffer): 1-miles radius  
Description: Springer Auto Company

Summary of ACS Estimates		2014 - 2018	
Population		828	
Population Density (per sq. mile)		318	
People of Color Population		547	
% People of Color Population		66%	
Households		438	
Housing Units		617	
Housing Units Built Before 1950		227	
Per Capita Income		21,617	
Land Area (sq. miles) (Source: SF1)		2.61	
% Land Area		100%	
Water Area (sq. miles) (Source: SF1)		0.00	
% Water Area		0%	
		2014 - 2018 ACS Estimates	MOE (±)
Population by Race		Percent	
Total		828	203
Population Reporting One Race		812	389
White		632	169
Black		19	31
American Indian		0	23
Asian		32	50
Pacific Islander		0	12
Some Other Race		129	104
Population Reporting Two or More Races		16	42
Total Hispanic Population		480	156
Total Non-Hispanic Population		348	
White Alone		281	131
Black Alone		19	31
American Indian Alone		0	23
Non-Hispanic Asian Alone		32	50
Pacific Islander Alone		0	12
Other Race Alone		0	12
Two or More Races Alone		16	44
Population by Sex			
Male		369	162
Female		459	190
Population by Age			
Age 0-4		29	37
Age 0-17		90	64
Age 18+		738	150
Age 65+		311	85

Data Note: Detail may not sum to totals due to rounding. Hispanic population can be of any race.

N/A means not available. Source: U.S. Census Bureau, American Community Survey (ACS) 2014 - 2018.



## EJSCREEN ACS Summary Report



Location: User-specified point center at 36.361356, -104.596898  
 Ring (buffer): 1-miles radius  
 Description: Springer Auto Company

	2014 - 2018 ACS Estimates	Percent	MOE (±)
<b>Population 25+ by Educational Attainment</b>			
Total	683	100%	154
Less than 9th Grade	4	1%	31
9th - 12th Grade, No Diploma	28	4%	76
High School Graduate	266	39%	91
Some College, No Degree	227	33%	93
Associate Degree	52	8%	40
Bachelor's Degree or more	158	23%	68
<b>Population Age 5+ Years by Ability to Speak English</b>			
Total	799	100%	200
Speak only English	392	49%	191
Non-English at Home <sup>1+2+3+4</sup>	406	51%	125
<sup>1</sup> Speak English "very well"	304	38%	96
<sup>2</sup> Speak English "well"	70	9%	51
<sup>3</sup> Speak English "not well"	32	4%	37
<sup>4</sup> Speak English "not at all"	0	0%	12
<sup>3+4</sup> Speak English "less than well"	32	4%	37
<sup>2+3+4</sup> Speak English "less than very well"	103	13%	61
<b>Linguistically Isolated Households*</b>			
Total	39	100%	35
Speak Spanish	27	70%	26
Speak Other Indo-European Languages	0	0%	12
Speak Asian-Pacific Island Languages	12	30%	20
Speak Other Languages	0	0%	12
<b>Households by Household Income</b>			
Household Income Base	438	100%	98
< \$15,000	65	15%	39
\$15,000 - \$25,000	68	16%	46
\$25,000 - \$50,000	102	23%	49
\$50,000 - \$75,000	119	27%	52
\$75,000 +	83	19%	46
<b>Occupied Housing Units by Tenure</b>			
Total	438	100%	98
Owner Occupied	338	77%	79
Renter Occupied	100	23%	54
<b>Employed Population Age 16+ Years</b>			
Total	762	100%	169
In Labor Force	367	48%	115
Civilian Unemployed in Labor Force	9	1%	13
Not In Labor Force	395	52%	139

**Data Note:** Detail may not sum to totals due to rounding. Hispanic population can be of any race.

N/A means not available. Source: U.S. Census Bureau, American Community Survey (ACS)

\*Households in which no one 14 and over speaks English "very well" or speaks English only.



## EJSCREEN ACS Summary Report



Location: User-specified point center at 36.361356, -104.596898  
Ring (buffer): 1-miles radius  
Description: Springer Auto Company

	2014 - 2018 ACS Estimates	Percent	MOE (±)
<b>Population by Language Spoken at Home*</b>			
Total (persons age 5 and above)	950	100%	291
English	675	71%	312
Spanish	248	26%	216
French	5	0%	7
French Creole	N/A	N/A	N/A
Italian	N/A	N/A	N/A
Portuguese	N/A	N/A	N/A
German	1	0%	8
Yiddish	N/A	N/A	N/A
Other West Germanic	N/A	N/A	N/A
Scandinavian	N/A	N/A	N/A
Greek	N/A	N/A	N/A
Russian	N/A	N/A	N/A
Polish	N/A	N/A	N/A
Serbo-Croatian	N/A	N/A	N/A
Other Slavic	N/A	N/A	N/A
Armenian	N/A	N/A	N/A
Persian	N/A	N/A	N/A
Gujarathi	N/A	N/A	N/A
Hindi	N/A	N/A	N/A
Urdu	N/A	N/A	N/A
Other Indic	N/A	N/A	N/A
Other Indo-European	1	0%	7
Chinese	4	0%	24
Japanese	N/A	N/A	N/A
Korean	2	0%	15
Mon-Khmer, Cambodian	N/A	N/A	N/A
Hmong	N/A	N/A	N/A
Thai	N/A	N/A	N/A
Laotian	N/A	N/A	N/A
Vietnamese	0	0%	17
Other Asian	0	0%	17
Tagalog	6	1%	50
Other Pacific Island	N/A	N/A	N/A
Navajo	N/A	N/A	N/A
Other Native American	N/A	N/A	N/A
Hungarian	N/A	N/A	N/A
Arabic	0	0%	17
Hebrew	N/A	N/A	N/A
African	N/A	N/A	N/A
Other and non-specified	8	1%	40
Total Non-English	275	29%	427

**Data Note:** Detail may not sum to totals due to rounding. Hispanic population can be of any race.  
N/A means not available. Source: U.S. Census Bureau, American Community Survey (ACS) 2014 - 2018.  
\*Population by Language Spoken at Home is available at the census tract summary level and up.

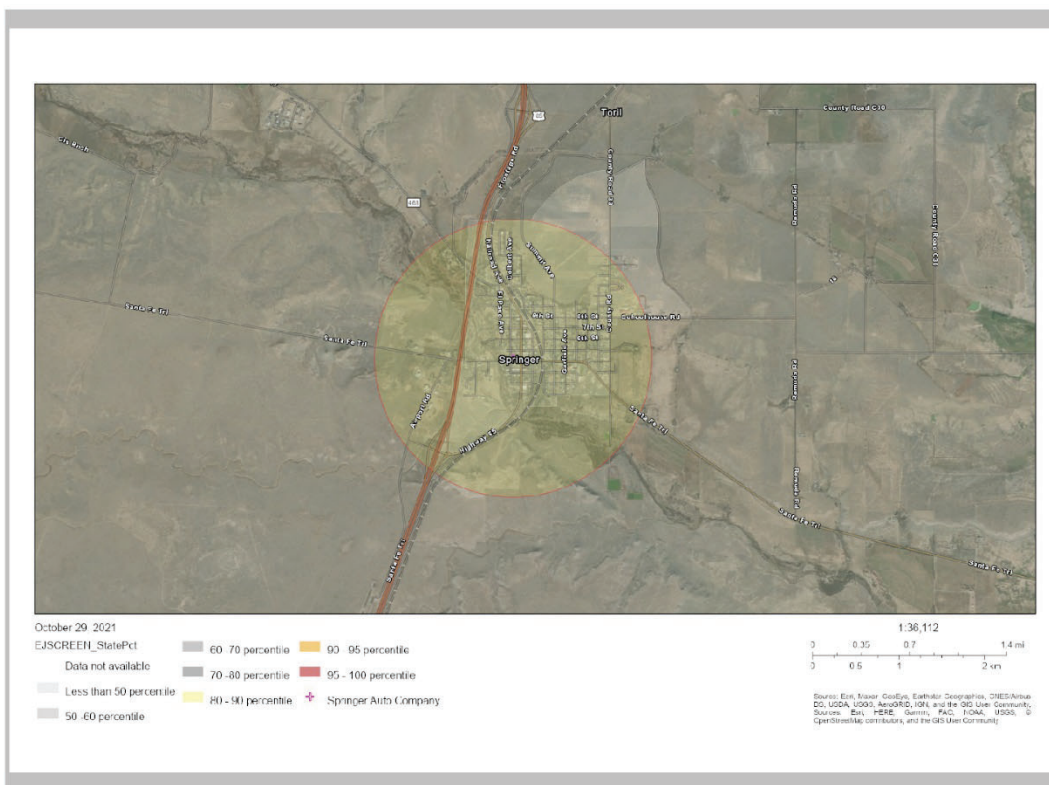


1 mile Ring Centered at 36.361356,-104.596898, NEW MEXICO, EPA Region 6

**Approximate Population: 828**

**Input Area (sq. miles): 3.14**

**Springer Auto Company**



Sites reporting to EPA	
Superfund NPL	0
Hazardous Waste Treatment, Storage, and Disposal Facilities (TSDF)	0



## EJSCREEN Report (Version 2020)



1 mile Ring Centered at 36.361356,-104.596898, NEW MEXICO, EPA Region 6

Approximate Population: 828

Input Area (sq. miles): 3.14

Springer Auto Company

Selected Variables	Value	State Avg.	%ile in State	EPA Region Avg.	%ile in EPA Region	USA Avg.	%ile in USA
<b>Environmental Indicators</b>							
Particulate Matter (PM 2.5 in $\mu\text{g}/\text{m}^3$ )	4.68	6.17	0	8.95	0	8.55	0
Ozone (ppb)	48.5	52.2	5	41.8	89	42.9	86
NATA* Diesel PM ( $\mu\text{g}/\text{m}^3$ )	0.026	0.281	2	0.401	<50th	0.478	<50th
NATA* Cancer Risk (lifetime risk per million)	13	25	0	36	<50th	32	<50th
NATA* Respiratory Hazard Index	0.15	0.32	0	0.45	<50th	0.44	<50th
Traffic Proximity and Volume (daily traffic count/distance to road)	35	360	23	400	22	750	20
Lead Paint Indicator (% Pre-1960 Housing)	0.47	0.18	88	0.17	88	0.28	75
Superfund Proximity (site count/km distance)	0.011	0.13	13	0.081	7	0.13	5
RMP Proximity (facility count/km distance)	0.011	0.24	2	0.82	0	0.74	0
Hazardous Waste Proximity (facility count/km distance)	0.011	0.78	1	0.99	0	5	0
Wastewater Discharge Indicator (toxicity-weighted concentration/m distance)	1.1E-06	150	52	9.5	27	9.4	39
<b>Demographic Indicators</b>							
Demographic Index	54%	52%	55	44%	65	36%	77
People of Color Population	66%	62%	56	52%	64	39%	76
Low Income Population	41%	42%	50	37%	60	33%	69
Linguistically Isolated Population	9%	5%	77	6%	76	4%	82
Population With Less Than High School Education	5%	15%	22	16%	21	13%	27
Population Under 5 years of age	4%	6%	27	7%	19	6%	25
Population over 64 years of age	38%	16%	96	13%	98	15%	97

\* The National-Scale Air Toxics Assessment (NATA) is EPA's ongoing, comprehensive evaluation of air toxics in the United States. EPA developed the NATA to prioritize air toxics, emission sources, and locations of interest for further study. It is important to remember that NATA provides broad estimates of health risks over geographic areas of the country, not definitive risks to specific individuals or locations. More information on the NATA analysis can be found at: <https://www.epa.gov/national-air-toxics-assessment>.

For additional information, see: [www.epa.gov/environmentaljustice](https://www.epa.gov/environmentaljustice)

EJSCREEN is a screening tool for pre-decisional use only. It can help identify areas that may warrant additional consideration, analysis, or outreach. It does not provide a basis for decision-making, but it may help identify potential areas of EJ concern. Users should keep in mind that screening tools are subject to substantial uncertainty in their demographic and environmental data, particularly when looking at small geographic areas. Important caveats and uncertainties apply to this screening-level information, so it is essential to understand the limitations on appropriate interpretations and applications of these indicators. Please see EJSCREEN documentation for discussion of these issues before using reports. This screening tool does not provide data on every environmental impact and demographic factor that may be relevant to a particular location. EJSCREEN outputs should be supplemented with additional information and local knowledge before taking any action to address potential EJ concerns.

October 29, 2021

3/3

***Attachment 2: Limited English Proficiency ("LEP") Assessment***

## Limited English Proficiency ("LEP") Assessment

**Facility:** Springer Auto Company  
**Location:** 501 Fourth Street, Springer, NM 87747  
**Buffer:** 1 miles  
**Date:** October 29, 2021

### ***Factor 1: Number and Proportion of LEP Individuals Eligible to be Served or Likely to be Encountered in Community of Concern***

Percent linguistically isolated households within 1-mile radius*:	9%
Percent linguistically isolated households by language within 1-mile radius*:	
Spanish:	70%
Other languages (Asian/Pacific Island):	30%
Sum:	100%
Percent linguistically isolated population, New Mexico**:	5%
Percent linguistically isolated population, USA**:	4%
Population age 5+ yrs speaking English "less than very well" within 1-mile radius*:	13%

\*: From "EJSCREEN ACS Report"

\*\*: From "EJSCREEN Report (version 2020)"

#### **Conclusions:**

- 1) Proportion of LEP persons (i.e., speaking English "less than very well") within one mile is significantly greater than statewide and national proportions.
- 2) Spanish is the primary non-English language spoken by LEP persons.
- 3) Historical participation: Not applicable (new Final Remediation Plan notice).

### ***Factor 2: Frequency with which LEP Individuals Come in Contact with the Program***

#### **Frequency Assessment ("frequent" / "occasional" / "not frequent")**

Past public participation has been infrequent in response to notices of submission of remediation plans.

**Factor 3: Nature or Importance of the Activity or Service Provided by the Program**

All Final Remediation Plans (FRPs) for PSTB sites are required by the NM Petroleum Storage Tank regulations to be made available for review prior to their finalization and implementation. The FRPs are reviewed by the PSTB to assess compliance with regulatory requirements and to evaluate their technical adequacy. FRPs are approved after the PSTB's review is complete, any inadequacies are addressed, and the public comments are evaluated and addressed as appropriate.

FRP review is deemed by the PSTB to be "important" to NMED, the affected community, and the State of New Mexico. FRP review is important to NMED because it establishes site-specific requirements that must be met to ensure protection of public health, welfare, and the environment. FRP review is important to the affected community because poorly implemented or poorly operated remediation activities have the potential to pose a public nuisance and adversely affect the quality of life of people living in the vicinity of the leaking petroleum storage tank site. FRP review is important to the State of New Mexico because implementation of effective remedial actions ensures that leaking petroleum tank sites will have a limited effect on the State's vital groundwater resources.

**Factor 4: Resources Available to NMED and Associated Costs**

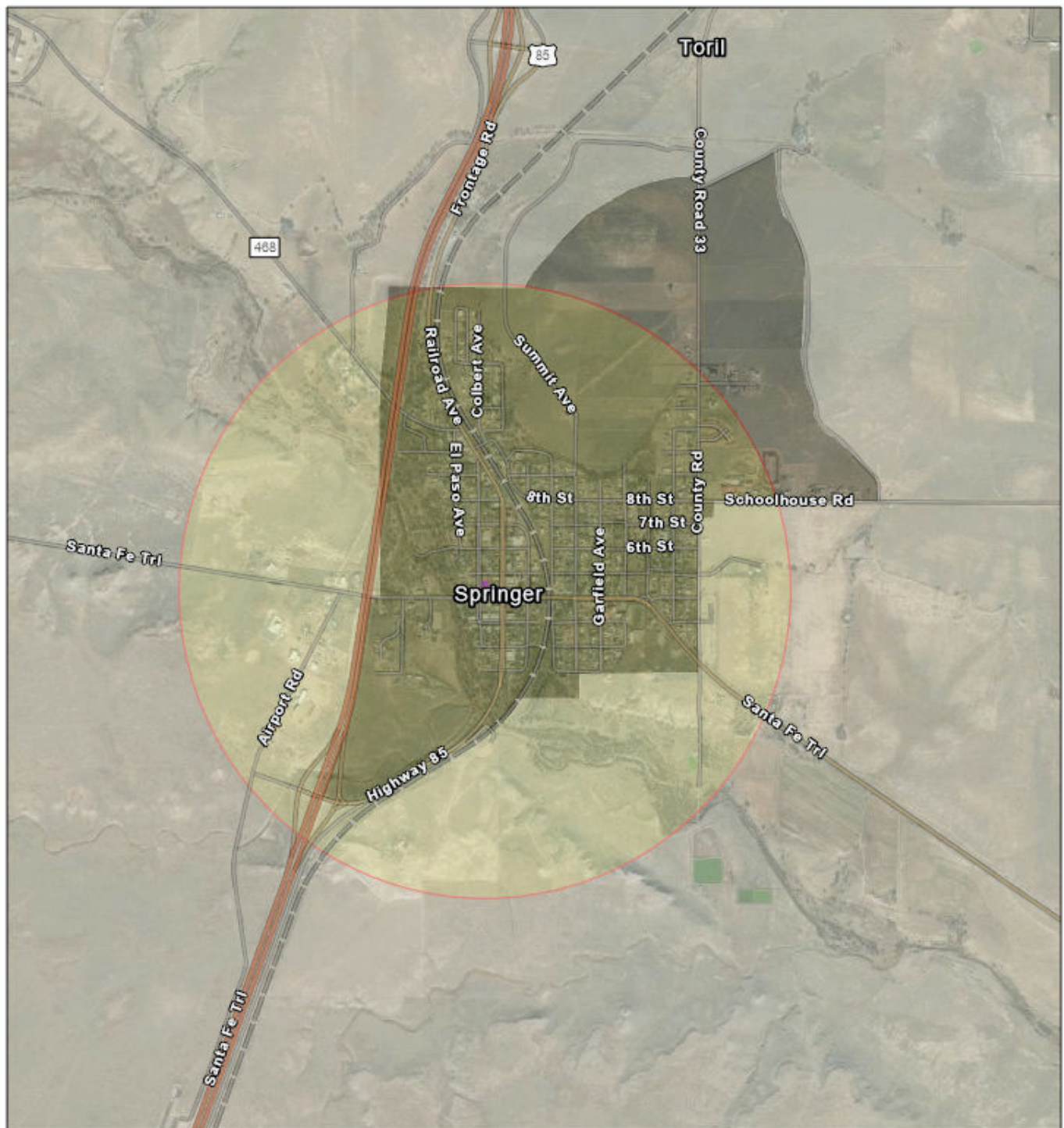
In accordance with regulatory requirements, the PSTB posts notices of submission in both English and Spanish and utilizes the services of a certified translator for creation of the Spanish-language notices. This translation cost is included in the Bureau's annual budget requests. As the need for additional translation/interpretation services has typically been limited, the PSTB is able to provide these additional services within budgetary constraints.

**LEP Services Plan**

The PSTB plans to provide Notices of Submission of Remediation Plan in both English and Spanish, which is consistent with statutory requirements and program practice and is appropriate based on the LEP analysis, as the majority of the LEP population speaks Spanish. The PSTB will provide further LEP services as requested.



# Springer Auto Company Linguistically Isolated Percentile



10/29/2021

EJSCREEN\_StatePct

Data not available

Less than 50 percentile

50 -60 percentile

60 -70 percentile

70 -80 percentile

80 - 90 percentile

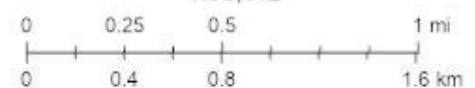
90 - 95 percentile

95 - 100 percentile



Springer Auto Company

1:36,112



Source: Esri, Maxar, GeoEye, Earthstar Geographics, CNES/Airbus DS, USDA, USGS, AeroGRID, IGN, and the GIS User Community, Sources: Esri, HERE, Garmin, FAO, NOAA, USGS, © OpenStreetMap contributors, and the GIS User Community