



**NEW MEXICO ENVIRONMENT DEPARTMENT**  
**GROUND WATER QUALITY BUREAU**



**PUBLIC INVOLVEMENT PLAN**  
**(PIP)**

**Facility Name:** San Juan Generating Station Solid Waste Pit

**Facility Location:** 6800 North County Road  
Sections 17 and 20, Township 30N, Range 15W

**County:** San Juan

**Responsible Party:** Public Service Company of New Mexico  
P.O. Box 227, Waterflow, NM 87421

**Agency:** Ground Water Quality Bureau  
Pollution Prevention Section

**GWQB Action:** Permitting - Renewal  
DP-306

**Bureau Contact:** Andrew Romero, Environmental Scientist  
(505) 827-0076  
[andrewc.romero@state.nm.us](mailto:andrewc.romero@state.nm.us)

Main bureau telephone number:  
(505) 827-2900

**EFFECTIVE DATE:** September 26, 2018

**REVISION DATE:** July 22, 2019

/s/ Steve Pullen

---

**Steve Pullen, Manager**  
**Pollution Prevention Section**

## Element 1 – Public Involvement Plan (PIP) Overview

The New Mexico Environment Department (NMED or Department), Ground Water Quality Bureau (Bureau) has developed this PIP in association with a Groundwater Discharge Permit for the San Juan Generating Station Solid Waste Pit. The Discharge Permit for this facility is referred to as DP-306.

The purpose of this PIP is to plan for providing public participation opportunities and information that may be needed for the community to participate in the permitting process for this facility. This PIP identifies information about the community and resources needed by the Bureau to incorporate community participation activities into the decision-making process. This PIP is developed in accordance with the Department's *Public Participation Policy* (Policy 07-13 or Policy), and incorporates the requirements of the Policy, as well as applicable regulatory and statutory public participation requirements.

This PIP implements the “elements” set forth in the Policy. Those elements include:

1. An overview of the Public Involvement Plan for the community affected by the activity
2. Bureau contact names and contact information, specifically for Limited English Proficiency (LEP) language assistance services (e.g., translation, interpreters) or for disability accommodations
3. A summary of the regulatory public participation framework associated with discharge permits
4. A description of community/stakeholder groups based on results of a preliminary environmental justice (EJ) screening
5. Details about planned public outreach activities

In developing this PIP, community participation needs were assessed to ensure appropriate public outreach. This was accomplished by identifying whether there is a combination of environmental and demographic factors that may impact public participation (e.g., low income community, minority community, LEP individuals, linguistically isolated households).

Public involvement associated with discharge permits occurs at different stages and in different forms. Public involvement activities required by statute or regulation are mandatory and subject to statutory or regulatory deadlines. Mandatory public involvement activities and associated time requirements relevant to this PIP are noted in the *Table of Mandated Public Involvement Activities* at the end of this PIP.

The Bureau plans to conduct the public involvement activities related to the permitting process outlined in the *Table of Public Involvement Activities* below. The activity timeline and dates are tentative and subject to change.

### Table of Public Involvement Activities

Activity	Date
<b>Public Notice One (PN-1)</b> See <i>Table of Mandated Public Involvement Activities</i> at the end of this PIP for details.	June 2018
<b>Placement of a hardcopy of the PIP</b> in the local NMED office: Farmington Field Office 3400 Messina Drive, Suite 5000 Farmington, NM 87402 (505) 566-9741	October 2018
<b>Notice of availability of draft permit (PN-2)</b> See <i>Table of Mandated Public Involvement Activities</i> .	August 2019 (anticipated)

All notices for upcoming meetings or hearings will include a statement that any person who requires assistance, an interpreter, or an auxiliary aid to participate in the process may contact a specifically identified Department person to request those services. Requested interpretation services during the meeting and accommodations or services for persons with disabilities will be arranged to the extent possible.

This PIP is a “living” document that may be amended for numerous reasons, including the consideration of public comments and feedback.

## Element 2 – Bureau Contact Information

### PIP Specific Contacts

The Bureau contact for this discharge permit is:

Andrew Romero, Environmental Scientist & Specialist  
NMED Ground Water Quality Bureau  
P.O. Box 5469, Santa Fe, NM 87502-5469  
(505) 827-0076  
andrewc.romero@state.nm.us

### Non-English Language Speaker Assistance

All public notices will contain a statement that non-English speakers may call the Bureau contact listed above and request language assistance in order to learn more about this permit or the

permitting process. Arrangements may be made for document translation or interpretation related to the permitting process as necessary and as resources allow.

### **Individuals with Disabilities Assistance**

All public notices will contain a statement that disabled individuals may call the Bureau contact listed above and request assistance needed to participate in activities associated with the permitting process.

The following numbers will be provided in public notices so that hearing-impaired callers can contact the Bureau and ask questions about the activity or proceeding: Toll-free numbers are available for TDD or TTY users to access the New Mexico Relay network (for deaf or hearing-impaired callers), 1-800-659-1779; TTY users: 1-800-659-8331.

### **Websites**

Outreach materials and notices will include links to the following website, where the Bureau's public notices and PIP information are posted:

Ground Water Quality Bureau – <https://www.env.nm.gov/gwqb/public-notice/>

## **Element 3 – Regulatory Framework for Public Participation Related to the Permitting Process**

The public participation regulatory framework associated with the permitting process is identified in the *Table of Mandated Public Involvement Activities* at the end of this PIP. The Table identifies activities subject to statutory or regulatory deadlines, the associated regulatory requirements, and the associated dates or time periods.

## **Element 4 – Description of Community/Stakeholder Groups Based on the EJSCREEN**

### **EJSCREEN Summary**

To provide for adequate public participation opportunities and meaningful involvement of persons in the permitting process, the affected communities must first be identified, informed about proposed environmental actions affecting the community, and invited to share their comments and concerns. The EJSCREEN tool developed by the U.S. Environmental Protection Agency (EPA) helps identify communities that are low income, have minority populations, and have limited English proficiency that may benefit from a variety of approaches for notification and outreach communication. This information is used to help plan for the community's involvement in the public process for environmental activities or actions. In addition to the EJSCREEN results,

the Bureau may consider additional information such as the U.S. Census Bureau website or NMED's EJ Mapping Tool.

The Bureau considers the affected community to be those persons living within the geographic area depicted on the attached EJSCREEN document that includes the discharge site. The results of the EJSCREEN American Community Survey (ACS) Summary Report (attached to this PIP) are summarized in the table below.

**EJSCREEN Results for the Affected Community**

Total population	6,898
Total number of households	2,048
Percentage minority population	73%
Percentage Hispanic Population	9%
Percentage of the population by race	Population reporting one race: White: .....29% Black: .....1% American Indian: .....63% Asian: .....1% Some Other Race: .....3%
Total number of persons over the age of five who speak English "less than very well"	320
Percentage of persons over the age of five who speak English "less than very well"	5%
Total number of linguistically isolated households	51
Percentage of linguistically isolated households (Total number of linguistically isolated households ÷ total number of households X 100)	2.49%
Languages by percentage in linguistically isolated households	Spanish: ..... 16% Other languages: ..... 84%
Percent linguistically isolated population, New Mexico*:	5.4%
Per capita income	\$20,262
Per capita income, USA**	\$29,979

\* U.S. Census Bureau. 2011-2015 American Community Survey 5-Year Estimates, Table S1602. Limited English Speaking Households. [https://factfinder.census.gov/bkmk/table/1.0/en/ACS/15\\_5YR/S1602/0400000US35](https://factfinder.census.gov/bkmk/table/1.0/en/ACS/15_5YR/S1602/0400000US35) (date of access: 7/26/2018).

\*\* U.S. Census Bureau. 2015 American Community Survey 1-Year Estimates, Table S0201. Selected Population Profile in the United States. [https://factfinder.census.gov/bkmk/table/1.0/en/ACS/15\\_1YR/S0201/0100000US](https://factfinder.census.gov/bkmk/table/1.0/en/ACS/15_1YR/S0201/0100000US) (date of access: 7/26/2018).

Based on the EJSCREEN results regarding language proficiencies, the Bureau plans to conduct public outreach in accordance with the *Table of Mandated Public Involvement Activities* at the end of this PIP.

## **Element 5 – Detailed Actions and Outreach Activities with the Affected Public**

Public involvement activities required by statute or regulation for this permitting action are listed in the *Table of Mandated Public Involvement Activities* at the end of this document.

### **Public Participation – Outreach Activities**

The Bureau will conduct the following outreach activities during this permitting process:

- Placement of this PIP on the Bureau website and in nearby NMED field office
- Postal mailing and email notices
- Newspaper notices
- Notice posted on NMED website

Newspapers to be utilized in the notification process include:

- Statewide circulation (English): Albuquerque Journal
- Local circulation (English): Farmington Daily Times – San Juan County
- Navajo Times (English)

Local, state, and federal government agencies, tribal entities, and land grant officials will be notified about the permitting process. A list of the agencies and officials notified can be provided upon request.

Indian Tribes, Pueblos and Nations will be notified about the permitting action through the contacts maintained by the Indian Affairs Department at the following URLs:

<http://www.iad.state.nm.us/apaches.html>

<http://www.iad.state.nm.us/navajo.html>

<http://www.iad.state.nm.us/pueblos.html>

Because of the proximity of Navajo Nation lands, a courtesy email will be sent to the environmental director or manager of the Navajo Nation Environmental Protection Agency. Emails will also be sent to the following Chapter Governments of the Navajo Nation:

- Hogback ([tsedaakaan@navajochapters.org](mailto:tsedaakaan@navajochapters.org))
- Upper Fruitland ([upperfruitland@navajochapters.org](mailto:upperfruitland@navajochapters.org))
- Nenahnezad ([nenahnezad@navajochapters.org](mailto:nenahnezad@navajochapters.org))
- San Juan ([sanjuan@navajochapters.org](mailto:sanjuan@navajochapters.org))
- Huerfano ([huerfano@navajochapters.org](mailto:huerfano@navajochapters.org))

Timelines and methods for submitting public comments are specified in the *Table of Mandated Public Involvement Activities*. Final discharge permit documents will be available from the Bureau's contact identified in Element 2 of this PIP.

#### **Postal Mailing or E-Mailing of Notices to Persons on the Facility-Specific Mailing List**

The Bureau solicits the names and contact information of interested parties with all public notices. The Bureau maintains those names on a Facility-Specific Mailing List and provides the individuals with information about regulatory activities for the facility. Individuals, organizations, and other interested parties are added to the mailing list as requested. All public notices will contain a statement directing interested individuals to contact the Bureau contact for this permit if they want to be added to the facility specific mailing list.

Other means of outreach such as fliers announcing public comment periods and/or public meetings or hearings may be posted in locations throughout the community (e.g., local businesses, schools, libraries) and on the Department's website, at the Bureau's discretion after consideration of public interest and input.

#### **Attachments**

The following documents are attached to this PIP:

- A copy of the EJSCREEN ACS Summary Report, and a map showing the area evaluated

**Table of Mandated Public Involvement Activities**

Activity	Dates
<p>Application Notice (PN-1): The first notice of the Bureau's receipt of the permit application – applicant's obligations at 20.6.2.3108.B and C – Bureau's obligations at 20.6.2.3108.E NMAC</p> <ul style="list-style-type: none"> <li>• Newspaper ads (PN-1 synopsis<sup>1</sup> English and Spanish)- Applicant obligation</li> <li>• NMED website <a href="https://www.env.nm.gov/gwqb/public-notice/">https://www.env.nm.gov/gwqb/public-notice/</a></li> <li>• Notice to government agencies</li> <li>• Notice to interested parties</li> </ul>	<p>Within 30 days of the department deeming the application administratively complete</p>
<p>Permit Notice (PN-2): Notice to the public of the availability of a draft permit for a 30-day review and comment period – the notice will outline the process for requesting a public hearing – obligation at 20.6.2.3108.H NMAC</p> <ul style="list-style-type: none"> <li>• NMED website <a href="https://www.env.nm.gov/gwqb/public-notice/">https://www.env.nm.gov/gwqb/public-notice/</a></li> <li>• Newspaper ads</li> <li>• Notification of interested parties</li> <li>• Notice to government agencies</li> <li>• Notice to Indian Tribes, Pueblos and Nations</li> </ul>	<p>Within 60 days of the department determining the application is technically complete and drafting a permit.</p>
<p>Public Hearing Notice (if required): Upon the Department's determination that there is substantial public interest in the permit – obligation at 20.6.2.3108.M NMAC. Notice includes information on how to participate in the hearing, and how to request an interpreter or auxiliary aid if needed.</p> <ul style="list-style-type: none"> <li>• NMED website <a href="https://www.env.nm.gov/gwqb/public-notice/">https://www.env.nm.gov/gwqb/public-notice/</a></li> <li>• Newspapers</li> <li>• Notice to interested parties</li> <li>• Notice to government agencies</li> <li>• Notice to Indian Tribes, Pueblos and Nations</li> </ul>	<p>Notice of the hearing shall occur at least 30 days prior to the hearing.</p>

---

<sup>1</sup> Suitable for display, the abbreviated format of the PN-1 synopsis does not contain all the information provided by a full public notice, e.g., language assistance or non-discrimination information.

Location: User-specified polygonal location

Ring (buffer): 4-mile radius

Description:

Summary of ACS Estimates		2011 - 2015	
Population		6,898	
Population Density (per sq. mile)		76	
Minority Population		5,010	
% Minority		73%	
Households		2,048	
Housing Units		2,528	
Housing Units Built Before 1950		108	
Per Capita Income		20,262	
Land Area (sq. miles) (Source: SF1)		91.16	
% Land Area		99%	
Water Area (sq. miles) (Source: SF1)		0.86	
% Water Area		1%	
		2011 - 2015 ACS Estimates	MOE (±)
Population by Race		Percent	
Total		6,898	550
Population Reporting One Race		6,735	1,287
White		2,021	400
Black		78	99
American Indian		4,320	560
Asian		85	108
Pacific Islander		0	11
Some Other Race		231	109
Population Reporting Two or More Races		163	170
Total Hispanic Population		639	267
Total Non-Hispanic Population		6,258	
White Alone		1,888	400
Black Alone		78	99
American Indian Alone		4,089	560
Non-Hispanic Asian Alone		85	108
Pacific Islander Alone		0	11
Other Race Alone		0	11
Two or More Races Alone		118	170
Population by Sex			
Male		3,411	340
Female		3,486	315
Population by Age			
Age 0-4		438	101
Age 0-17		1,924	244
Age 18+		4,974	316
Age 65+		674	103

**Data Note:** Detail may not sum to totals due to rounding. Hispanic population can be of any race. N/A means not available.

**Source:** U.S. Census Bureau, American Community Survey (ACS) 2011 - 2015.

Location: User-specified polygonal location

Ring (buffer): 4-mile radius

Description:

	2011 - 2015 ACS Estimates	Percent	MOE (±)
<b>Population 25+ by Educational Attainment</b>			
Total	4,160	100%	319
Less than 9th Grade	190	5%	114
9th - 12th Grade, No Diploma	300	7%	84
High School Graduate	1,261	30%	165
Some College, No Degree	1,858	45%	217
Associate Degree	592	14%	166
Bachelor's Degree or more	552	13%	130
<b>Population Age 5+ Years by Ability to Speak English</b>			
Total	6,460	100%	484
Speak only English	4,087	63%	320
Non-English at Home <sup>1+2+3+4</sup>	2,373	37%	368
<sup>1</sup> Speak English "very well"	2,054	32%	368
<sup>2</sup> Speak English "well"	147	2%	54
<sup>3</sup> Speak English "not well"	154	2%	128
<sup>4</sup> Speak English "not at all"	18	0%	46
<sup>3+4</sup> Speak English "less than well"	173	3%	128
<sup>2+3+4</sup> Speak English "less than very well"	320	5%	139
<b>Linguistically Isolated Households*</b>			
Total	51	100%	32
Speak Spanish	8	16%	20
Speak Other Indo-European Languages	0	0%	11
Speak Asian-Pacific Island Languages	0	0%	16
Speak Other Languages	43	84%	30
<b>Households by Household Income</b>			
Household Income Base	2,048	100%	181
< \$15,000	198	10%	91
\$15,000 - \$25,000	229	11%	76
\$25,000 - \$50,000	443	22%	127
\$50,000 - \$75,000	469	23%	127
\$75,000 +	709	35%	122
<b>Occupied Housing Units by Tenure</b>			
Total	2,048	100%	181
Owner Occupied	1,586	77%	151
Renter Occupied	461	23%	119
<b>Employed Population Age 16+ Years</b>			
Total	5,175	100%	431
In Labor Force	3,188	62%	399
Civilian Unemployed in Labor Force	311	6%	95
Not In Labor Force	1,987	38%	250

**Data Note:** Detail may not sum to totals due to rounding. Hispanic population can be of any race. N/A means not available. **Source:** U.S. Census Bureau, American Community Survey (ACS) 2011 - 2015.

\*Households in which no one 14 and over speaks English "very well" or speaks English only.

Location: User-specified polygonal location

Ring (buffer): 4-mile radius

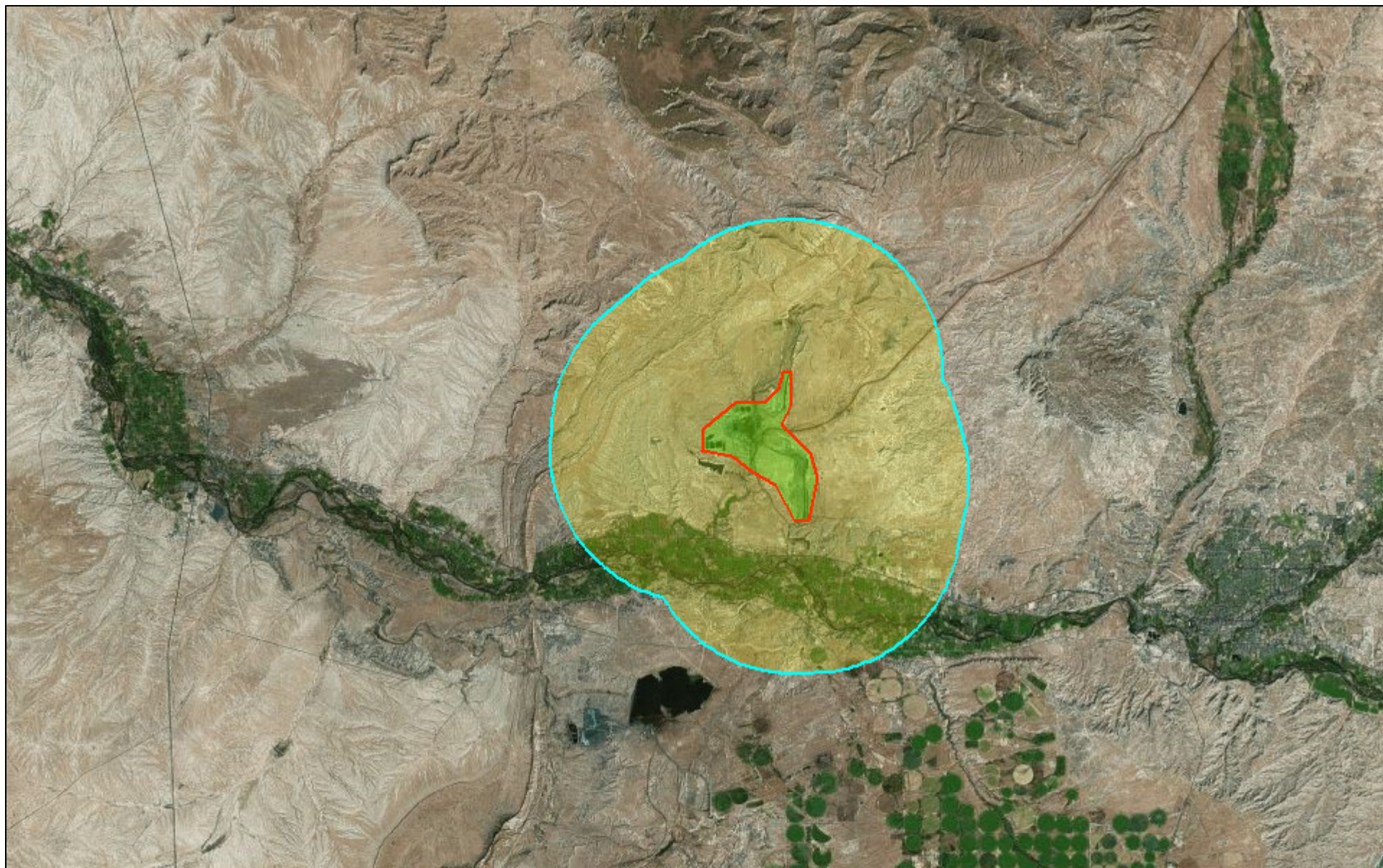
Description:

	2011 - 2015 ACS Estimates	Percent	MOE (±)
<b>Population by Language Spoken at Home*</b>			
Total (persons age 5 and above)	6,460	100%	484
English	N/A	N/A	N/A
Spanish	N/A	N/A	N/A
French	N/A	N/A	N/A
French Creole	N/A	N/A	N/A
Italian	N/A	N/A	N/A
Portuguese	N/A	N/A	N/A
German	N/A	N/A	N/A
Yiddish	N/A	N/A	N/A
Other West Germanic	N/A	N/A	N/A
Scandinavian	N/A	N/A	N/A
Greek	N/A	N/A	N/A
Russian	N/A	N/A	N/A
Polish	N/A	N/A	N/A
Serbo-Croatian	N/A	N/A	N/A
Other Slavic	N/A	N/A	N/A
Armenian	N/A	N/A	N/A
Persian	N/A	N/A	N/A
Gujarathi	N/A	N/A	N/A
Hindi	N/A	N/A	N/A
Urdu	N/A	N/A	N/A
Other Indic	N/A	N/A	N/A
Other Indo-European	N/A	N/A	N/A
Chinese	N/A	N/A	N/A
Japanese	N/A	N/A	N/A
Korean	N/A	N/A	N/A
Mon-Khmer, Cambodian	N/A	N/A	N/A
Hmong	N/A	N/A	N/A
Thai	N/A	N/A	N/A
Laotian	N/A	N/A	N/A
Vietnamese	N/A	N/A	N/A
Other Asian	N/A	N/A	N/A
Tagalog	N/A	N/A	N/A
Other Pacific Island	N/A	N/A	N/A
Navajo	N/A	N/A	N/A
Other Native American	N/A	N/A	N/A
Hungarian	N/A	N/A	N/A
Arabic	N/A	N/A	N/A
Hebrew	N/A	N/A	N/A
African	N/A	N/A	N/A
Other and non-specified	N/A	N/A	N/A
Total Non-English	N/A	N/A	N/A

**Data Note:** Detail may not sum to totals due to rounding. Hispanic population can be of any race. N/A means not available. **Source:** U.S. Census Bureau, American Community Survey (ACS) 2011 - 2015.

\*Population by Language Spoken at Home is available at the census tract summary level and up.

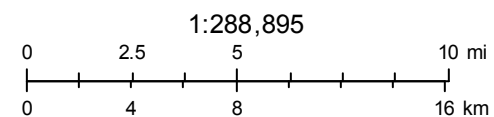
# San Juan Generating Station Solid Waste Pit (DP-306)



July 3, 2018

Buffer Area

Digitized Polygon



© 2018 Microsoft Corporation Earthstar Geographics SIO