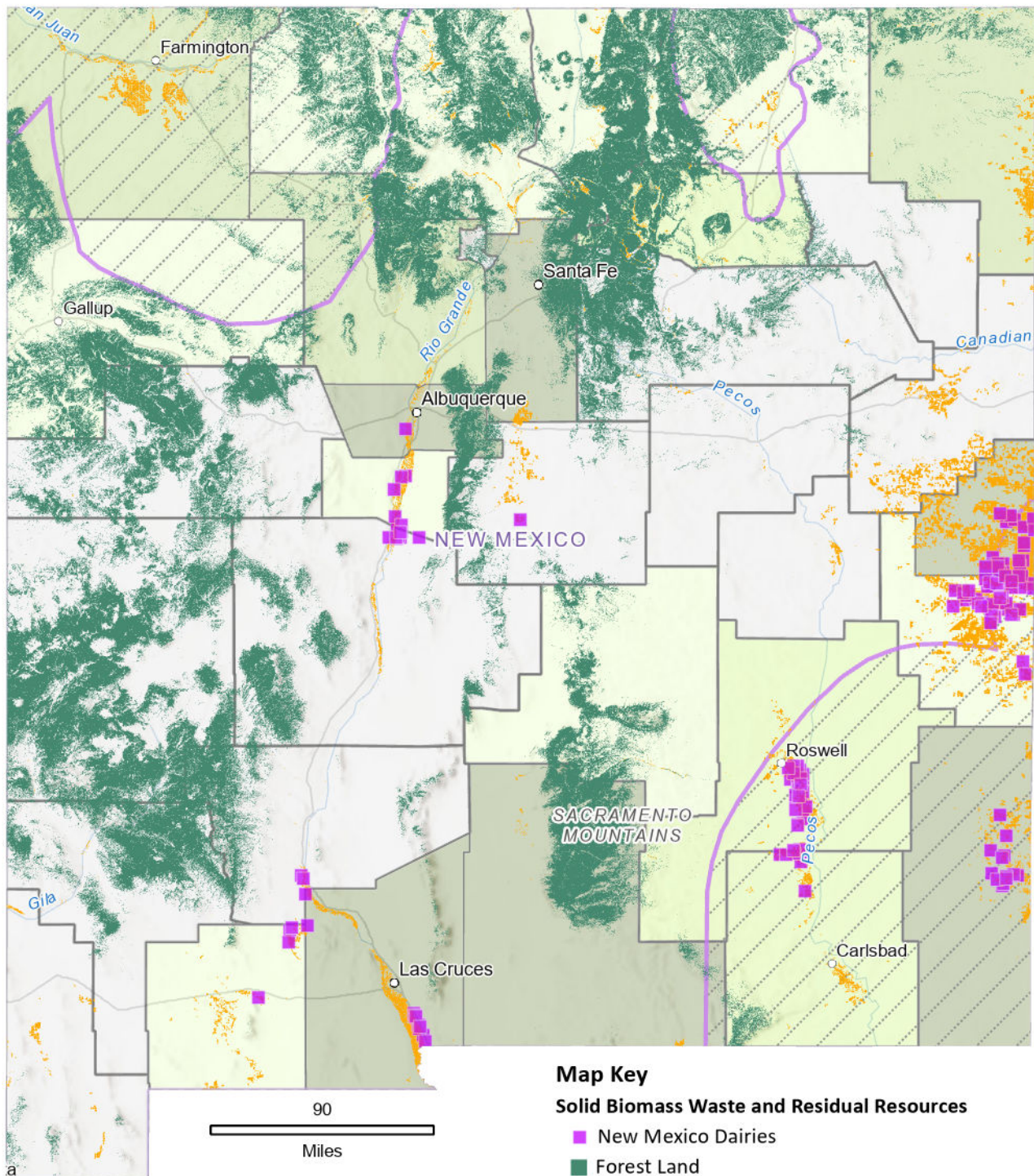


# New Mexico's Clean Fuel Feedstock Assets



Map shows New Mexico's clean transportation fuel feedstock assets from forests, crops, dairies, and oil and gas production. Additional waste and residual assets include used cooking oil from restaurants, tallow and other animal waste products from grocers, food processing residuals, methane from landfills and wastewater treatment plants, and municipal organic waste diversions.

## Map Key

### Solid Biomass Waste and Residual Resources

- New Mexico Dairies
- Forest Land
- Crop Land
- Oil and Gas Production

### Tons of Biomass Waste and Residual Resources Per County

- < 5,000
- 5,001 - 10,000
- 10,001 - 15,000
- 15,001 - 20,000
- > 20,000

Source: U.S. Solid Biomass Resources - Waste and Residual Resources in tons, (NREL 2014)

Credits: Texas Parks & Wildlife, Esri, TomTom, Garmin, FAO, NOAA, USGS, Bureau of Land Management, EPA, NPS, USFWS, Esri, USGS, NMED, USEIA  
Coordinate System: WGS 1984 Web Mercator (Auxiliary Sphere)