



NEW MEXICO ENVIRONMENT DEPARTMENT
GROUND WATER QUALITY BUREAU
PUBLIC INVOLVEMENT PLAN
(PIP)



Facility Name: Escalante Generating Station

Facility Location: County Road 19
Prewitt, NM
Sections 25, 26 and 27, T14N, R12W

County: McKinley County

Responsible Party: Barbara A. Walz
SVP, Policy & Compliance, CCO
Tri-State Generation and Transmission Association, Inc.
PO Box 33695
Denver, CO 80233-0695

Agency: Ground Water Quality Bureau
Pollution Prevention Section

GWQB Action: Permitting - Renewal
DP-206

Bureau Contact: Melanie Sandoval, Geoscientist Supervisor
(505) 827-2936
Melanie.Sandoval2@state.nm.us

Main bureau telephone number:
(505) 827-2900

EFFECTIVE DATE: December 9, 2019

REVISION DATE: N/A

/s/ Pamela E. Homer for Steve Pullen

Steve Pullen, Manager
Pollution Prevention Section

Element 1 – Public Involvement Plan (PIP) Overview

The New Mexico Environment Department (NMED or Department), Ground Water Quality Bureau (Bureau) has developed this PIP for the application for renewal of the Ground Water Discharge Permit for Escalante Generating Station. The permit for this facility is referred to as DP-206.

The purpose of this PIP is to plan for providing public participation opportunities and information that may be needed for the community to participate in the permitting process for this facility. This PIP identifies information about the community and resources needed by the Bureau to incorporate community participation activities into the decision-making process. This PIP is developed in accordance with the Department's *Public Participation Policy* (Policy 07-13 or Policy), and incorporates the requirements of the Policy, as well as applicable regulatory and statutory public participation requirements.

This PIP implements the “elements” set forth in the Policy. Those elements include:

1. An overview of the Public Involvement Plan for the community affected by the activity
2. Bureau contact names and contact information, specifically for Limited English Proficiency (LEP) language assistance services (e.g., translation, interpreters) or for disability accommodations
3. A summary of the regulatory public participation framework associated with discharge permits
4. A description of community/stakeholder groups based on results of a preliminary environmental justice (EJ) screening
5. Details about planned public outreach activities

In developing this PIP, community participation needs were assessed to ensure appropriate public outreach. This was accomplished by identifying whether there is a combination of environmental and demographic factors that may impact public participation (e.g., low income community, minority community, LEP individuals, linguistically isolated households).

Public involvement associated with discharge permits occurs at different stages and in different forms. Public involvement activities required by statute or regulation are mandatory and subject to statutory or regulatory deadlines. Mandatory public involvement activities and associated time requirements relevant to this PIP are noted in the *Table of Mandated Public Involvement Activities* at the end of this PIP.

The Bureau plans to conduct the public involvement activities related to the permitting process outlined in the *Table of Public Involvement Activities* below. The activity timeline and dates are tentative and subject to change.

Table of Public Involvement Activities

Activity	Date
Application Notice (PN-1) See <i>Table of Mandated Public Involvement Activities</i> at the end of this PIP for details.	November 2019
Placement of a hardcopy of the PIP in the local NMED office: NMED Grants Office 708 Uranium Ave. Milan, NM 87021 (505) 209-4042	December 2019
Notice of availability of draft permit (PN-2) See <i>Table of Mandated Public Involvement Activities</i> .	January 2020 (anticipated)

All notices for upcoming meetings or hearings will include a statement that any person who requires assistance, an interpreter, or an auxiliary aid to participate in the process may contact a specifically identified Department person to request those services. Requested interpretation services during the meeting and accommodations or services for persons with disabilities will be arranged to the extent possible.

This PIP is a “living” document that may be amended for numerous reasons, including the consideration of public comments and feedback.

Element 2 – Bureau Contact Information

PIP Specific Contacts

The Bureau contact for this discharge permit is:
Melanie Sandoval, Geoscientist Supervisor
NMED Ground Water Quality Bureau
P.O. Box 5469
Santa Fe, New Mexico 87502-5469
(505) 827-2936 / melanie.sandoval2@state.nm.us

Non-English Language Speaker Assistance

All public notices will contain a statement that non-English speakers may call the Bureau contact listed above and request language assistance in order to learn more about this permit or the

permitting process. Arrangements may be made for document translation or interpretation related to the permitting process as necessary and as resources allow.

Individuals with Disabilities Assistance

All public notices will contain a statement that disabled individuals may call the Bureau contact listed above and request assistance needed to participate in activities associated with the permitting process.

The following information will be provided in public notices so that hearing-impaired callers can contact the Bureau and ask questions about the activity or proceeding: Toll-free numbers are available for TDD or TTY users to access the New Mexico Relay network (for deaf or hearing-impaired callers), 1-800-659-1779; TTY users: 1-800-659-8331.

Websites

Outreach materials and notices will include links to the following website, where the Bureau's public notices and PIP information are posted:

Ground Water Quality Bureau – <https://www.env.nm.gov/gwqb/public-notice/>

Element 3 – Regulatory Framework for Public Participation Related to the Permitting Process

The public participation regulatory framework associated with the permitting process is identified in the *Table of Mandated Public Involvement Activities* at the end of this PIP. The Table identifies activities subject to statutory or regulatory deadlines, the associated regulatory requirements, and the associated dates or time periods.

Element 4 – Description of Community/Stakeholder Groups Based on the EJSCREEN

EJSCREEN Summary

To provide for adequate public participation opportunities and meaningful involvement of persons in the permitting process, the affected communities must first be identified, informed about proposed environmental actions affecting the community, and invited to share their comments and concerns. The EJSCREEN tool developed by the U.S. Environmental Protection Agency (EPA) helps identify communities that are low income, have minority populations, and have limited English proficiency that may benefit from a variety of approaches for notification and outreach communication. This information is used to help plan for the community's involvement in the public process for environmental activities or actions. In addition to the EJSCREEN results, the Bureau may consider additional information such as the U.S. Census Bureau website or NMED's EJ Mapping Tool.

The Bureau considers the affected community to be those persons living within a 4-mile radius of the discharge site. The results of the EJSCREEN American Community Survey (ACS) Summary Report (attached to this PIP) are summarized in the table below.

EJSCREEN Results for the Affected Community

Total population	509
Total number of households	138
Percentage minority population	91%
Percentage Hispanic population	3%
Percentage of the population by race	Population reporting one race: White:10% Black:0% American Indian:87% Asian:0% Pacific Islander:0% Some Other Race:1%
Total number of persons greater than the age of five who speak English “less than very well”	47
Percentage of persons greater than the age of five who speak English “less than very well”	10%
Total number of linguistically isolated households	15
Percentage of linguistically isolated households (Total number of linguistically isolated households ÷ total number of households) X 100	10.8%
Languages by percentage in linguistically isolated households	Spanish:0% Other Indo-European languages: .0% Asian-Pacific Island languages:0% Other languages:100%
Percent linguistically isolated population, New Mexico*:	5.4%
Per capita income	\$11,544
Per capita income, USA**	\$29,979

* U.S. Census Bureau. 2011-2015 American Community Survey 5-Year Estimates, Table S1602. Limited English-Speaking Households. https://factfinder.census.gov/bkmk/table/1.0/en/ACS/15_5YR/S1602/0400000US35 (date of access: 7/26/2018).

** U.S. Census Bureau. 2015 American Community Survey 1-Year Estimates, Table S0201. Selected Population Profile in the United States. https://factfinder.census.gov/bkmk/table/1.0/en/ACS/15_1YR/S0201/0100000US (date of access: 7/26/2018).

Based on the EJSCREEN results regarding language proficiencies, the Bureau plans to conduct public outreach in accordance with the Table of Mandated Public Involvement Activities at the end of this PIP.

The EJ Screen ACS Summary Report shows the population in the affected community is very low overall and does not specify the languages spoken by the linguistically isolated population. The report does identify a high percentage of American Indians in the affected community. The Bureau will therefore assume that the majority of the linguistically isolated population is affiliated with the Navajo Nation nearby.

Element 5 – Detailed Actions and Outreach Activities with the Affected Public

Public involvement activities required by statute or regulation for this permitting action are listed in the *Table of Mandated Public Involvement Activities* at the end of this document.

Public Participation – Outreach Activities

The Bureau will conduct the following outreach activities during this permitting process:

- Placement of this PIP on the Bureau website and in nearby NMED field office
- Postal mailing and email notices
- Newspaper notices
- Notice posted on NMED website

Newspapers to be utilized in the notification process include:

- Statewide circulation (English): Albuquerque Journal
- Local circulation (English): Gallup Independent – McKinley County

Local, state, and federal government agencies, tribal entities, and land grant officials will be notified about the permitting process. A list of the agencies and officials notified can be provided upon request.

Indian Tribes, Pueblos and Nations will be notified about the permitting action through the contacts maintained by the Indian Affairs Department at the following URLs:

<http://www.iad.state.nm.us/apaches.html>

<http://www.iad.state.nm.us/navajo.html>

<http://www.iad.state.nm.us/pueblos.html>

Because of the proximity of the Navajo Nation, a courtesy email will be sent to the Navajo Nation Environmental Protection Agency. Emails will also be sent to the following Chapter Governments of the Navajo Nation:

- Baca-Prewitt: baca@navajochapters.org
- Casamero Lake: casamerolake@navajochapters.org

Timelines and methods for submitting public comments are specified in the *Table of Mandated Public Involvement Activities*. Final discharge permit documents will be available from the Bureau's contact identified in Element 2 of this PIP.

Postal Mailing or E-Mailing of Notices to Persons on the Facility-Specific Mailing List

The Bureau solicits the names and contact information of interested parties with all public notices. The Bureau maintains those names on a Facility-Specific Mailing List and provides the individuals with information about regulatory activities for the facility. Individuals, organizations, and other interested parties are added to the mailing list as requested. All public notices will contain a statement directing interested individuals to contact the Bureau contact for this permit if they want to be added to the facility specific mailing list.

Other means of outreach such as fliers announcing public comment periods and/or public meetings or hearings may be posted in locations throughout the community (e.g., local businesses, schools, libraries) and on the Department's website, at the Bureau's discretion after consideration of public interest and input.

Attachments

- A copy of the EJSCREEN ACS Summary Report, and a map showing the area evaluated

Table of Mandated Public Involvement Activities

Activity	Dates
<p>Application Notice (PN-1): The first notice of the Bureau's receipt of the permit application – applicant's obligations at 20.6.2.3108.B and C NMAC – Bureau's obligations at 20.6.2.3108.E NMAC</p> <ul style="list-style-type: none"> • Newspaper display ads (PN-1 synopsis¹ in English and Spanish)- Applicant obligation • NMED website https://www.env.nm.gov/qwqb/public-notice/ • Notice to government agencies • Notice to interested parties 	<p>Within 30 days of the department deeming the application administratively complete</p>
<p>Permit Notice (PN-2): Notice to the public of the availability of a draft permit for a 30-day review and comment period – the notice will outline the process for requesting a public hearing – obligation at 20.6.2.3108.H through J NMAC</p> <ul style="list-style-type: none"> • NMED website https://www.env.nm.gov/qwqb/public-notice/ • Newspaper legal ads • Notification of interested parties • Notice to government agencies • Notice to Indian Tribes, Pueblos and Nations 	<p>Within 60 days of the department determining the application is technically complete and drafting a permit.</p>
<p>Public Hearing Notice (if required): Upon the Department's determination that there is substantial public interest in the permit – obligation at 20.6.2.3108.M NMAC. Notice includes information on how to participate in the hearing, and how to request an interpreter or auxiliary aid if needed.</p> <ul style="list-style-type: none"> • NMED website https://www.env.nm.gov/qwqb/public-notice/ • Newspapers • Notice to interested parties • Notice to government agencies • Notice to Indian Tribes, Pueblos and Nations 	<p>Notice of the hearing shall occur at least 30 days prior to the hearing.</p>

¹ Suitable for display, the abbreviated format of the PN-1 synopsis does not contain all the information provided by a full public notice, e.g., language assistance or non-discrimination information.

Location: User-specified point center at 35.415723, -108.075181

Ring (buffer): 4-miles radius

Description: DP-206 Escalante Generating Station

Summary of ACS Estimates		2013 - 2017	
Population		509	
Population Density (per sq. mile)		9	
Minority Population		463	
% Minority		91%	
Households		138	
Housing Units		208	
Housing Units Built Before 1950		4	
Per Capita Income		11,544	
Land Area (sq. miles) (Source: SF1)		53.84	
% Land Area		100%	
Water Area (sq. miles) (Source: SF1)		0.12	
% Water Area		0%	
		2013 - 2017 ACS Estimates	MOE (±)
Population by Race		Percent	
Total		509	267
Population Reporting One Race		497	366
White		49	63
Black		0	12
American Indian		442	247
Asian		0	12
Pacific Islander		0	12
Some Other Race		7	20
Population Reporting Two or More Races		12	29
Total Hispanic Population		13	205
Total Non-Hispanic Population		496	
White Alone		46	63
Black Alone		0	12
American Indian Alone		432	241
Non-Hispanic Asian Alone		0	12
Pacific Islander Alone		0	12
Other Race Alone		7	20
Two or More Races Alone		12	28
Population by Sex			
Male		258	193
Female		251	155
Population by Age			
Age 0-4		16	25
Age 0-17		145	110
Age 18+		365	140
Age 65+		109	78

Data Note: Detail may not sum to totals due to rounding. Hispanic population can be of any race.

N/A means not available. **Source:** U.S. Census Bureau, American Community Survey (ACS) 2013 - 2017

Location: User-specified point center at 35.415723, -108.075181

Ring (buffer): 4-miles radius

Description: DP-206 Escalante Generating Station

	2013 - 2017 ACS Estimates	Percent	MOE (±)
Population 25+ by Educational Attainment			
Total	321	100%	212
Less than 9th Grade	48	15%	47
9th - 12th Grade, No Diploma	57	18%	55
High School Graduate	131	41%	120
Some College, No Degree	67	21%	66
Associate Degree	13	4%	32
Bachelor's Degree or more	19	6%	30
Population Age 5+ Years by Ability to Speak English			
Total	493	100%	263
Speak only English	231	47%	149
Non-English at Home ¹⁺²⁺³⁺⁴	261	53%	166
¹ Speak English "very well"	214	44%	163
² Speak English "well"	20	4%	36
³ Speak English "not well"	24	5%	44
⁴ Speak English "not at all"	2	0%	15
³⁺⁴ Speak English "less than well"	27	5%	45
²⁺³⁺⁴ Speak English "less than very well"	47	10%	53
Linguistically Isolated Households*			
Total	15	100%	44
Speak Spanish	0	0%	12
Speak Other Indo-European Languages	0	0%	12
Speak Asian-Pacific Island Languages	0	0%	12
Speak Other Languages	15	100%	42
Households by Household Income			
Household Income Base	138	100%	62
< \$15,000	54	39%	49
\$15,000 - \$25,000	29	21%	38
\$25,000 - \$50,000	35	25%	43
\$50,000 - \$75,000	4	3%	13
\$75,000 +	17	12%	24
Occupied Housing Units by Tenure			
Total	138	100%	62
Owner Occupied	124	90%	63
Renter Occupied	14	10%	30
Employed Population Age 16+ Years			
Total	399	100%	220
In Labor Force	167	42%	128
Civilian Unemployed in Labor Force	66	17%	89
Not In Labor Force	232	58%	138

Data Note: Detail may not sum to totals due to rounding. Hispanic population can be of any race.

N/A means not available. **Source:** U.S. Census Bureau, American Community Survey (ACS)

*Households in which no one 14 and over speaks English "very well" or speaks English only.

Location: User-specified point center at 35.415723, -108.075181

Ring (buffer): 4-miles radius

Description: DP-206 Escalante Generating Station

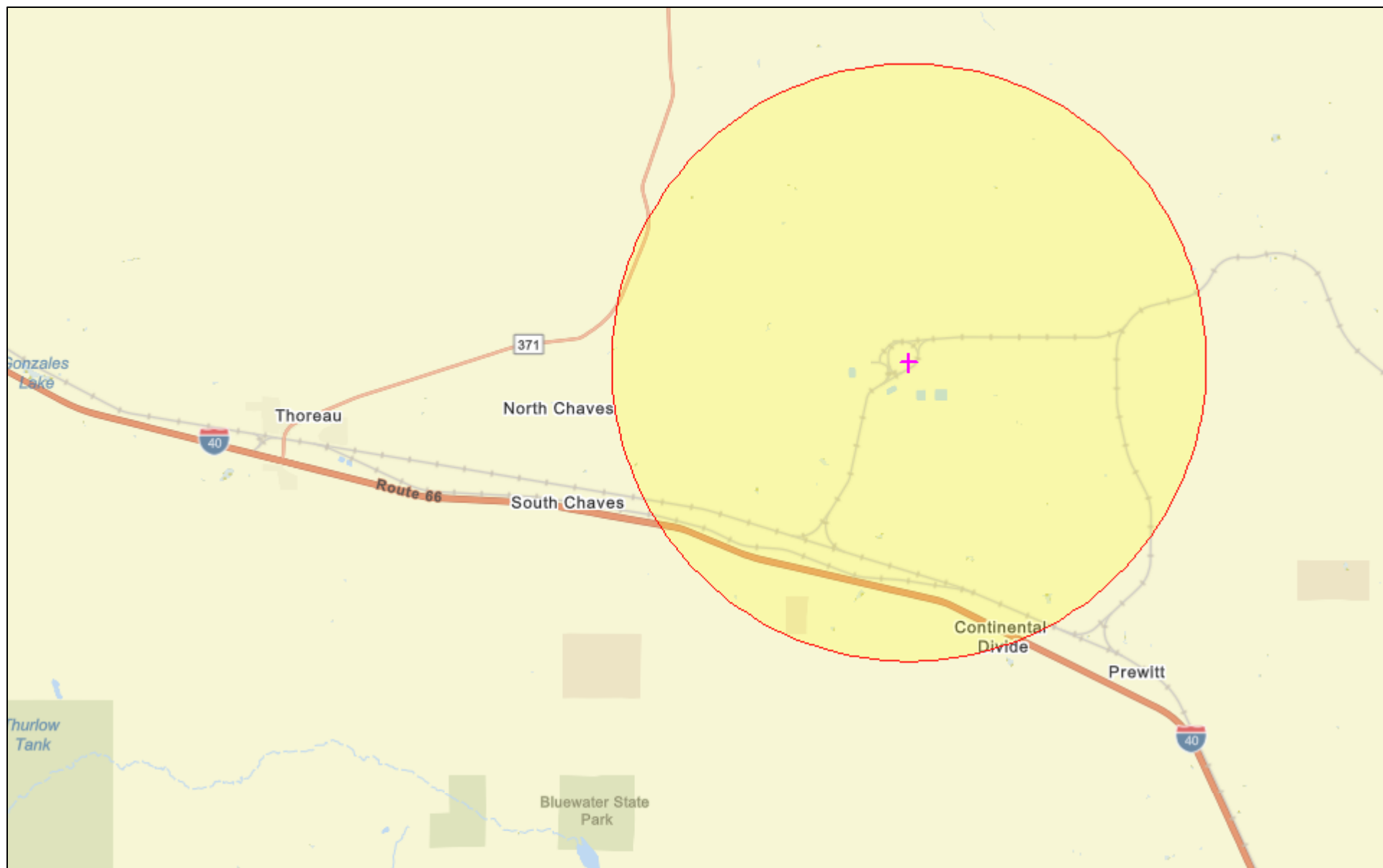
	2013 - 2017 ACS Estimates	Percent	MOE (±)
Population by Language Spoken at Home*			
Total (persons age 5 and above)	N/A	N/A	N/A
English	N/A	N/A	N/A
Spanish	N/A	N/A	N/A
French	N/A	N/A	N/A
French Creole	N/A	N/A	N/A
Italian	N/A	N/A	N/A
Portuguese	N/A	N/A	N/A
German	N/A	N/A	N/A
Yiddish	N/A	N/A	N/A
Other West Germanic	N/A	N/A	N/A
Scandinavian	N/A	N/A	N/A
Greek	N/A	N/A	N/A
Russian	N/A	N/A	N/A
Polish	N/A	N/A	N/A
Serbo-Croatian	N/A	N/A	N/A
Other Slavic	N/A	N/A	N/A
Armenian	N/A	N/A	N/A
Persian	N/A	N/A	N/A
Gujarathi	N/A	N/A	N/A
Hindi	N/A	N/A	N/A
Urdu	N/A	N/A	N/A
Other Indic	N/A	N/A	N/A
Other Indo-European	N/A	N/A	N/A
Chinese	N/A	N/A	N/A
Japanese	N/A	N/A	N/A
Korean	N/A	N/A	N/A
Mon-Khmer, Cambodian	N/A	N/A	N/A
Hmong	N/A	N/A	N/A
Thai	N/A	N/A	N/A
Laotian	N/A	N/A	N/A
Vietnamese	N/A	N/A	N/A
Other Asian	N/A	N/A	N/A
Tagalog	N/A	N/A	N/A
Other Pacific Island	N/A	N/A	N/A
Navajo	N/A	N/A	N/A
Other Native American	N/A	N/A	N/A
Hungarian	N/A	N/A	N/A
Arabic	N/A	N/A	N/A
Hebrew	N/A	N/A	N/A
African	N/A	N/A	N/A
Other and non-specified	N/A	N/A	N/A
Total Non-English	N/A	N/A	N/A

Data Note: Detail may not sum to totals due to rounding. Hispanic population can be of any race.

N/A means not available. **Source:** U.S. Census Bureau, American Community Survey (ACS) 2013 - 2017.

*Population by Language Spoken at Home is available at the census tract summary level and up.

DP-206 EJ Screen



December 4, 2019

