



**NEW MEXICO ENVIRONMENT DEPARTMENT**  
**GROUND WATER QUALITY BUREAU**  
**PUBLIC INVOLVEMENT PLAN**  
**(PIP)**



**Facility Name:** Mountain View Dairy

**Facility Location:** 13090 S. Stern Drive  
Mesquite, NM 88048  
Sections 5 and 6, Township 25S, Range 03E

**County:** Dona Ana

**Responsible Party:** John DeRuyter  
PO Box 345 Mesquite, NM 88048

**Agency:** Ground Water Quality Bureau  
Agriculture Compliance Section

**GWQB Action:** Permitting - Renewal  
DP-70

**Bureau Contact:** Jaben Richards, Team Leader  
(505) 660-8376  
Jaben.richards@state.nm.us

Main bureau telephone number:  
(505) 827-2900

**EFFECTIVE DATE:** March 9, 2022

**REVISION DATE:** N/A

---

**For Justin Ball**  
**Chief, Ground Water Quality Bureau**

## Element 1 – Public Involvement Plan (PIP) Overview

The New Mexico Environment Department (NMED or Department), Ground Water Quality Bureau (Bureau) has developed this PIP for the application for renewal of the Ground Water Discharge Permit for Mountain View Dairy. The permit for this facility is referred to as DP-70.

The purpose of this PIP is to plan for providing public participation opportunities and information that may be needed for the community to participate in the permitting process for this facility. This PIP identifies information about the community and resources needed by the Bureau to incorporate community participation activities into the decision-making process. This PIP is developed in accordance with the Department's *Public Participation Policy* (Policy 07-13 or Policy), and incorporates the requirements of the Policy, as well as applicable regulatory and statutory public participation requirements.

This PIP implements the “elements” set forth in the Policy. Those elements include:

1. An overview of the Public Involvement Plan for the community affected by the activity
2. Bureau contact names and contact information, specifically for Limited English Proficiency (LEP) language assistance services (e.g., translation, interpreters) or for disability accommodations
3. A summary of the regulatory public participation framework associated with discharge permits
4. A description of community/stakeholder groups based on results of a preliminary environmental justice (EJ) screening
5. Details about planned public outreach activities

In developing this PIP, community participation needs were assessed to ensure appropriate public outreach. This was accomplished by identifying whether there is a combination of environmental and demographic factors that may impact public participation (e.g., low income community, minority community, LEP individuals, linguistically isolated households). Because the community located near the Mountain View Dairy includes a significant percentage of Spanish speakers, the Bureau will provide appropriate information in both English and Spanish.

Public involvement associated with discharge permits occurs at different stages and in different forms. Public involvement activities required by statute or regulation are mandatory and subject to statutory or regulatory deadlines. Mandatory public involvement activities and associated time requirements relevant to this PIP are noted in the *Table of Mandated Public Involvement Activities* at the end of this PIP.

The Bureau plans to conduct the public involvement activities related to the permitting process outlined in the *Table of Public Involvement Activities* below. The activity timeline and dates are tentative and subject to change.

**Table of Public Involvement Activities**

<b>Activity</b>	<b>Date</b>
<b>Application Notice (PN-1)</b> <i>See Table of Mandated Public Involvement Activities at the end of this PIP for details.</i>	July 2021
<b>Placement of a hardcopy of the PIP in the local NMED office:</b> NMED Las Cruces Office 2301 Entrada Del Sol Las Cruces, NM 88001 Phone (575)-288-2050	March 2022
<b>Notice of availability of draft permit (PN-2)</b> <i>See Table of Mandated Public Involvement Activities.</i>	March 2022

All notices for upcoming meetings or hearings will include a statement that any person who requires assistance, an interpreter, or an auxiliary aid to participate in the process may contact a specifically identified Department person to request those services. Requested interpretation services during the meeting and accommodations or services for persons with disabilities will be arranged to the extent possible.

This PIP is a “living” document that may be amended for numerous reasons, including the consideration of public comments and feedback.

## **Element 2 – Bureau Contact Information**

### **PIP Specific Contacts**

The Bureau contact for this discharge permit is:

Jaben Richards, Team Leader  
NMED Ground Water Quality Bureau  
P.O. Box 5469, Santa Fe, NM 87502-5469  
505-660-8376 / Jaben.richards@state.nm.us

## **Non-English Language Speaker Assistance**

All public notices will contain a statement that non-English speakers may call the Bureau contact listed above and request language assistance in order to learn more about this permit or the permitting process. Arrangements may be made for document translation or interpretation related to the permitting process as necessary and as resources allow.

## **Individuals with Disabilities Assistance**

All public notices will contain a statement that individuals with disabilities may call the Bureau contact listed above and request assistance needed to participate in activities associated with the permitting process.

The following information will be provided in public notices so that individuals who are deaf, hard of hearing, or have difficulty speaking on the phone can contact the Bureau and ask questions about the activity or proceeding: Telephone conversation assistance is available through Relay New Mexico at no charge for people who are deaf, hard of hearing, or have difficulty speaking on the phone, by calling 1-800-659-1779 (English); 1-800-327-1857 (Spanish); TTY users: 1-800-659-8331.

## **Websites**

Outreach materials and notices will include links to the following website, where the Bureau's public notices and PIP information are posted:

Ground Water Quality Bureau – <https://www.env.nm.gov/public-notices/>

## **Element 3 – Regulatory Framework for Public Participation Related to the Permitting Process**

The public participation regulatory framework associated with the permitting process is identified in the *Table of Mandated Public Involvement Activities* at the end of this PIP. The Table identifies activities subject to statutory or regulatory deadlines, the associated regulatory requirements, and the associated dates or time periods.

## **Element 4 – Description of Community/Stakeholder Groups Based on the EJSCREEN**

### **EJSCREEN Summary**

To provide for adequate public participation opportunities and meaningful involvement of persons in the permitting process, the affected communities must first be identified, informed about proposed environmental actions affecting the community, and invited to share their comments and concerns. The EJSCREEN tool developed by the U.S. Environmental Protection

Agency (EPA) helps identify communities that are low income, have minority populations, and have limited English proficiency that may benefit from a variety of approaches for notification and outreach communication. This information is used to help plan for the community's involvement in the public process for environmental activities or actions. In addition to the EJSCREEN results, the Bureau may consider additional information such as the U.S. Census Bureau website or NMED's EJ Mapping Tool.

The Bureau considers the affected community to be those persons living within a 4-mile radius of the discharge site. The results of the EJSCREEN American Community Survey (ACS) Summary Report (attached to this PIP) are summarized in the table below.

**EJSCREEN Results for the Affected Community**

Total population	7,744
Total number of households	2,635
Percentage minority population	84%
Percentage Hispanic population	82%
Percentage of the population by race	Population reporting one race: White: ..... 88% Black: ..... 0% American Indian: ..... 2% Asian: ..... 0% Pacific Islander: ..... 0% Some Other Race: ..... 7%
Total number of persons greater than the age of five who speak English "less than very well"	1,918
Percentage of persons greater than the age of five who speak English "less than very well"	27%
Total number of linguistically isolated households	585
Percentage of linguistically isolated households (Total number of linguistically isolated households ÷ total number of households) X 100	22%
Languages by percentage in linguistically isolated households	Spanish: ..... 88% Other Indo-European languages: 0% Asian-Pacific Island languages: ..... 2% Other languages: ..... 10%
Percent linguistically isolated population, New Mexico*:	5.4%
Per capita income	\$22,877
Per capita income, USA**	\$29,979

\* U.S. Census Bureau. 2011-2015 American Community Survey 5-Year Estimates, Table S1602. Limited English-Speaking Households. [https://factfinder.census.gov/bkmk/table/1.0/en/ACS/15\\_5YR/S1602/0400000US35](https://factfinder.census.gov/bkmk/table/1.0/en/ACS/15_5YR/S1602/0400000US35) (date of access: 7/26/2018).

\*\* U.S. Census Bureau. 2015 American Community Survey 1-Year Estimates, Table S0201. Selected Population Profile in the United States. [https://factfinder.census.gov/bkmk/table/1.0/en/ACS/15\\_1YR/S0201/0100000US](https://factfinder.census.gov/bkmk/table/1.0/en/ACS/15_1YR/S0201/0100000US) (date of access: 7/26/2018).

The EJSCREEN results indicate that for the affected community the proportion of the population with limited English proficiency (LEP) is significant, and that the predominant non-English language is Spanish. The Bureau has therefore performed a LEP assessment for the community and attaches that assessment to this PIP.

Because the affected community has a significant percentage of persons with difficulties communicating in English, the Bureau will consider the language and communication needs of this community when conducting public outreach and participation activities. To accomplish this the Bureau, to the extent its budget and time limitations allow, will provide the same information in Spanish as in English in public comment notices, public meeting notices, and other announcements (e.g., radio broadcasts, brochures, signs, postcards) and will strive to make public participation efforts as inclusive as possible. See Element 5 for more specifics on the public outreach and participation activities.

## **Element 5 – Detailed Actions and Outreach Activities with the Affected Public**

Public involvement activities required by statute or regulation for this permitting action are listed in the *Table of Mandated Public Involvement Activities* at the end of this document.

### **Public Participation – Outreach Activities**

The Bureau will conduct the following outreach activities during this permitting process:

- Placement of this PIP on the Bureau website and in nearby NMED field office
- Postal mailing and email notices
- Newspaper notices
- Notice posted on NMED website

Newspapers to be utilized in the notification process include:

- Statewide circulation (English): Albuquerque Journal
- Local circulation (English and Spanish): Las Cruces Sun-News – Dona Ana

Local, state, and federal government agencies, tribal entities, land grant officials, and colonias will be notified about the permitting process. A list of the agencies and officials notified can be provided upon request.

Indian Tribes, Pueblos and Nations will be notified about the permitting action through the contacts maintained by the Indian Affairs Department at the following URLs:

<https://www.iad.state.nm.us/pueblo-tribes-and-nations/pueblos/>

<https://www.iad.state.nm.us/pueblo-tribes-and-nations/navajo/>

<https://www.iad.state.nm.us/pueblo-tribes-and-nations/apaches/>

Because of the proximity of the Brazito land grant and Mesquite colonia, a courtesy email will be sent to the District 7: South Central Council of Governments.

Timelines and methods for submitting public comments are specified in the *Table of Mandated Public Involvement Activities*. Final discharge permit documents will be available from the Bureau's contact identified in Element 2 of this PIP.

### **Postal Mailing or E-Mailing of Notices to Persons on the Facility-Specific Mailing List**

The Bureau solicits the names and contact information of interested parties with all public notices. The Bureau maintains those names on a Facility-Specific Mailing List and provides the individuals with information about regulatory activities for the facility. Individuals, organizations, and other interested parties are added to the mailing list as requested. All public notices will contain a statement directing interested individuals to contact the Bureau contact for this permit if they want to be added to the facility specific mailing list.

Other means of outreach such as fliers announcing public comment periods and/or public meetings or hearings may be posted in locations throughout the community (e.g., local businesses, schools, libraries) and on the Department's website, at the Bureau's discretion after consideration of public interest and input.

### **PIP Contingency Plan**

During a public health emergency or other unforeseen event outside the control of the Department, the Department will make every effort to ensure the public remains involved in and informed of the decision making and permit processes. The purpose of this PIP Contingency Plan is in part to address circumstances when public spaces are closed because of potential human exposure risks. The Department will attempt to identify and utilize alternate methods of document delivery to the public and public viewing when conventional methods and locations are unavailable. When it is unsafe to utilize the physical PIP and document repositories, the Department will consider utilizing electronic delivery methods deemed appropriate for the permitting action. While operating under the PIP Contingency Plan, the PN-2 will include a statement specifying that the PIP Contingency Plan is in effect and that, "instead of placing a copy of the PIP for this permitting action in a public location, NMED will make the PIP available to the community by sending the PIP by email or US mail to any community member requesting a copy. An individual may request a copy of the PIP utilizing the Bureau contact information in this public notice. When making such a request, please specify how you would like the document delivered. If you request a copy of a PIP, you will receive a revised PIP should the PIP be updated in the

future.” During the times of potential human exposure risks and the resultant implementation of this PIP Contingency Plan, public meetings and hearings will only be held when or through means by which the Department can ensure the public’s health and safety and this PIP can be fully adhered to.

**Attachments**

- LEP Assessment
- A copy of the EJSCREEN ACS Summary Report, and a map showing the area evaluated



**Table of Mandated Public Involvement Activities**

Activity	Dates
<p>Application Notice (PN-1): The first notice of the Bureau's receipt of the permit application – applicant's obligations at 20.6.2.3108.B and C NMAC – Bureau's obligations at 20.6.2.3108.E NMAC</p> <ul style="list-style-type: none"> <li>• Newspaper display ads (PN-1 synopsis<sup>1</sup> in English and Spanish)- Applicant obligation</li> <li>• NMED website <a href="https://www.env.nm.gov/public-notices/">https://www.env.nm.gov/public-notices/</a></li> <li>• Notice to government agencies</li> <li>• Notice to interested parties</li> </ul>	<p>Within 30 days of the department deeming the application administratively complete</p>
<p>Permit Notice (PN-2): Notice to the public of the availability of a draft permit for a 30-day review and comment period – the notice will outline the process for requesting a public hearing – obligation at 20.6.2.3108.H through J NMAC</p> <ul style="list-style-type: none"> <li>• NMED website <a href="https://www.env.nm.gov/public-notices/">https://www.env.nm.gov/public-notices/</a></li> <li>• Newspaper legal ads</li> <li>• Notification of interested parties</li> <li>• Notice to government agencies</li> <li>• Notice to Indian Tribes, Pueblos and Nations</li> </ul>	<p>Within 60 days of the department determining the application is technically complete and drafting a permit.</p>
<p>Public Hearing Notice (if required): Upon the Department's determination that there is substantial public interest in the permit – obligation at 20.6.2.3108.M NMAC. Notice includes information on how to participate in the hearing, and how to request an interpreter or auxiliary aid if needed.</p> <ul style="list-style-type: none"> <li>• NMED website <a href="https://www.env.nm.gov/public-notices/">https://www.env.nm.gov/public-notices/</a></li> <li>• Newspapers</li> <li>• Notice to interested parties</li> <li>• Notice to government agencies</li> <li>• Notice to Indian Tribes, Pueblos and Nations</li> </ul>	<p>Notice of the hearing shall occur at least 30 days prior to the hearing.</p>
<p>Response to Comments (if comments received): Upon the Secretary's decision regarding issuance of a discharge permit – obligation at 20.6.2.3109.B NMAC. The Response to Comments shall specify which provisions, if any, in the draft permit were changed and the reasons for the change, and shall briefly describe and respond to all significant comments on the draft permit raised during the public comment period</p>	<p>Response is issued 30 days after the administrative record is complete and all required information is available</p>

<sup>1</sup> Suitable for display, the abbreviated format of the PN-1 synopsis does not contain all the information provided by a full public notice, e.g., language assistance or non-discrimination information.

or at any hearing. The Secretary shall notify persons who participated in the permitting action by mail or email of the action taken and the reasons for such action and shall include a copy of the Response to Comments.	
--	--

**ATTACHMENT**  
**Limited English Proficiency (LEP) Assessment**  
**Facility: Mountain View Dairy, DP-70**

**Factor 1: The Number and Proportion of LEP Individuals Eligible to be Served or Likely to be Encountered in Community of Concern**

See Public Involvement Plan (PIP), Table of EJSCREEN Results for the Affected Community.

Conclusions:

1. The number of LEP individuals (persons over the age of 5 who speak English “less than very well” in the affected community) is 1,918.
2. The percentage of LEP individuals in the affected community is 27%.
3. The percentage of linguistically isolated households is 22%, which is significantly greater than the statewide average.
4. Spanish is the predominant non-English language spoken by LEP persons.
5. Historical participation: The Bureau maintains a facility-specific mailing list. The current mailing list for the facility includes 12 persons or entities, including Dona Ana County, Montana Vista Community Coalition, and Desert Sands MDWCA). A review of the administrative record for this facility indicates considerable public interest/participation overall during the past 10 years. The portion of that public interest attributable to the LEP community cannot be determined from the record.

**Factor 2: Frequency with which LEP Individuals Might Come in Contact with the Program**

Contact with the discharge permitting process primarily occurs when a permit application is under review. The GWQB provides notice to the public and encourages participation. Individuals may participate by requesting information, submitting comments on draft permits, requesting hearings, and taking part in hearings. Some permits generate considerable public interest, but participation is low for most permits. Historical participation in permitting activities for this facility is summarized under Factor 1.

Conclusion:

Although LEP participation has been limited, given the demographics of the area and the considerable overall public interest in this facility, the Bureau considers the potential for LEP contact with the permitting process to be “occasional”.

**Factor 3: Nature and Importance of the Activity or Service Provided by the Program**

The permitting activity is deemed by the GWQB to be "important" to NMED, the impacted community, and the State of New Mexico. The permitting activity is important to NMED because the permit establishes site-specific requirements that must be met to ensure protection of public

health and groundwater quality and provides a means to enforce those requirements. The permitting activity is important to the impacted community because poorly operated waste treatment facilities have the potential to pose a public nuisance and adversely affect the quality of life of people living in the vicinity of the facility. The permitting activity is important to the State of New Mexico because establishment of effective permits ensures that discharges will not impact the State's limited groundwater resources and that waste disposal is conducted in a consistent manner throughout the State.

Conclusion:

The GWQB considers the permitting activity “important” to NMED, to the state as a whole, and to the impacted community.

**Factor 4: Resources Available to NMED for LEP Services and Associated Costs**

For outreach to LEP communities associated with this permit action, NMED employs an in-house Spanish translator/interpreter and utilizes a phone interpretation service to assist during direct communication between LEP individuals and NMED staff. The costs of newspaper publication of public notice in Spanish and of interpretive services for a public meeting or hearing are being incorporated into the Bureau’s budget, to the extent possible. Fees collected from the permittee in accordance with the schedule at 20.6.2.3114 NMAC are not sufficient to cover these costs.

Conclusion:

The Bureau can accommodate the costs of the LEP services identified in this plan. If additional services are requested, the budgetary implications will be reviewed.

**LEP Services Plan:**

To accommodate the needs of the LEP individuals who may be interested in this permitting process, the Bureau plans to:

1. Translate the Public Notice Two (PN-2) and any subsequent public notices into Spanish and publish in a paper serving the local community.
2. Provide interpretive services at any public meeting or public hearing, if requested.
3. Interact with members of the LEP community using certified interpreters, when needed and feasible.

The Bureau will consider requests from members of the affected community for additional LEP services.

Location: User-specified polygonal location  
 Ring (buffer): 4-miles radius  
 Description: Mountain View Dairy

Summary of ACS Estimates		2014 - 2018	
Population		7,744	
Population Density (per sq. mile)		145	
People of Color Population		6,543	
% People of Color Population		84%	
Households		2,635	
Housing Units		2,973	
Housing Units Built Before 1950		348	
Per Capita Income		22,877	
Land Area (sq. miles) (Source: SF1)		53.56	
% Land Area		100%	
Water Area (sq. miles) (Source: SF1)		0.24	
% Water Area		0%	
		2014 - 2018 ACS Estimates	Percent MOE (±)
<b>Population by Race</b>			
Total		7,744	100% 909
Population Reporting One Race		7,540	97% 1,349
White		6,831	88% 890
Black		23	0% 55
American Indian		135	2% 113
Asian		27	0% 62
Pacific Islander		0	0% 12
Some Other Race		524	7% 217
Population Reporting Two or More Races		204	3% 201
Total Hispanic Population		6,380	82% 879
Total Non-Hispanic Population		1,364	
White Alone		1,201	16% 377
Black Alone		12	0% 60
American Indian Alone		87	1% 68
Non-Hispanic Asian Alone		10	0% 62
Pacific Islander Alone		0	0% 12
Other Race Alone		0	0% 12
Two or More Races Alone		53	1% 67
<b>Population by Sex</b>			
Male		4,078	53% 651
Female		3,667	47% 350
<b>Population by Age</b>			
Age 0-4		645	8% 182
Age 0-17		2,104	27% 291
Age 18+		5,640	73% 323
Age 65+		1,250	16% 154

**Data Note:** Detail may not sum to totals due to rounding. Hispanic population can be of any race.  
 N/A means not available. **Source:** U.S. Census Bureau, American Community Survey (ACS) 2014 - 2018

Location: User-specified polygonal location

Ring (buffer): 4-miles radius

Description: Mountain View Dairy

	2014 - 2018 ACS Estimates	Percent	MOE (±)
<b>Population 25+ by Educational Attainment</b>			
Total	4,913	100%	500
Less than 9th Grade	1,462	30%	163
9th - 12th Grade, No Diploma	625	13%	151
High School Graduate	971	20%	154
Some College, No Degree	1,100	22%	131
Associate Degree	226	5%	83
Bachelor's Degree or more	756	15%	170
<b>Population Age 5+ Years by Ability to Speak English</b>			
Total	7,100	100%	781
Speak only English	2,144	30%	330
Non-English at Home <sup>1+2+3+4</sup>	4,956	70%	575
<sup>1</sup> Speak English "very well"	3,037	43%	418
<sup>2</sup> Speak English "well"	703	10%	255
<sup>3</sup> Speak English "not well"	707	10%	152
<sup>4</sup> Speak English "not at all"	508	7%	159
<sup>3+4</sup> Speak English "less than well"	1,216	17%	204
<sup>2+3+4</sup> Speak English "less than very well"	1,918	27%	286
<b>Linguistically Isolated Households*</b>			
Total	585	100%	130
Speak Spanish	514	88%	99
Speak Other Indo-European Languages	0	0%	12
Speak Asian-Pacific Island Languages	10	2%	22
Speak Other Languages	61	10%	88
<b>Households by Household Income</b>			
Household Income Base	2,635	100%	195
< \$15,000	455	17%	91
\$15,000 - \$25,000	385	15%	93
\$25,000 - \$50,000	924	35%	158
\$50,000 - \$75,000	346	13%	94
\$75,000 +	525	20%	131
<b>Occupied Housing Units by Tenure</b>			
Total	2,635	100%	195
Owner Occupied	2,041	77%	172
Renter Occupied	594	23%	124
<b>Employed Population Age 16+ Years</b>			
Total	5,978	100%	579
In Labor Force	3,469	58%	442
Civilian Unemployed in Labor Force	304	5%	115
Not In Labor Force	2,509	42%	301

**Data Note:** Detail may not sum to totals due to rounding. Hispanic population can be of anyrace.

N/A means not available. **Source:** U.S. Census Bureau, American Community Survey (ACS)

\*Households in which no one 14 and over speaks English "very well" or speaks English only.

Location: User-specified polygonal location

Ring (buffer): 4-miles radius

Description: Mountain View Dairy

	2014 - 2018 ACS Estimates	Percent	MOE (±)
<b>Population by Language Spoken at Home*</b>			
Total (persons age 5 and above)	6,899	100%	761
English	1,935	28%	600
Spanish	4,717	68%	717
French	0	0%	17
French Creole	N/A	N/A	N/A
Italian	N/A	N/A	N/A
Portuguese	N/A	N/A	N/A
German	0	0%	17
Yiddish	N/A	N/A	N/A
Other West Germanic	N/A	N/A	N/A
Scandinavian	N/A	N/A	N/A
Greek	N/A	N/A	N/A
Russian	N/A	N/A	N/A
Polish	N/A	N/A	N/A
Serbo-Croatian	N/A	N/A	N/A
Other Slavic	N/A	N/A	N/A
Armenian	N/A	N/A	N/A
Persian	N/A	N/A	N/A
Gujarathi	N/A	N/A	N/A
Hindi	N/A	N/A	N/A
Urdu	N/A	N/A	N/A
Other Indic	N/A	N/A	N/A
Other Indo-European	1	0%	17
Chinese	7	0%	22
Japanese	N/A	N/A	N/A
Korean	0	0%	17
Mon-Khmer, Cambodian	N/A	N/A	N/A
Hmong	N/A	N/A	N/A
Thai	N/A	N/A	N/A
Laotian	N/A	N/A	N/A
Vietnamese	0	0%	17
Other Asian	0	0%	17
Tagalog	0	0%	17
Other Pacific Island	N/A	N/A	N/A
Navajo	N/A	N/A	N/A
Other Native American	N/A	N/A	N/A
Hungarian	N/A	N/A	N/A
Arabic	129	2%	241
Hebrew	N/A	N/A	N/A
African	N/A	N/A	N/A
Other and non-specified	110	2%	201
Total Non-English	4,964	72%	969

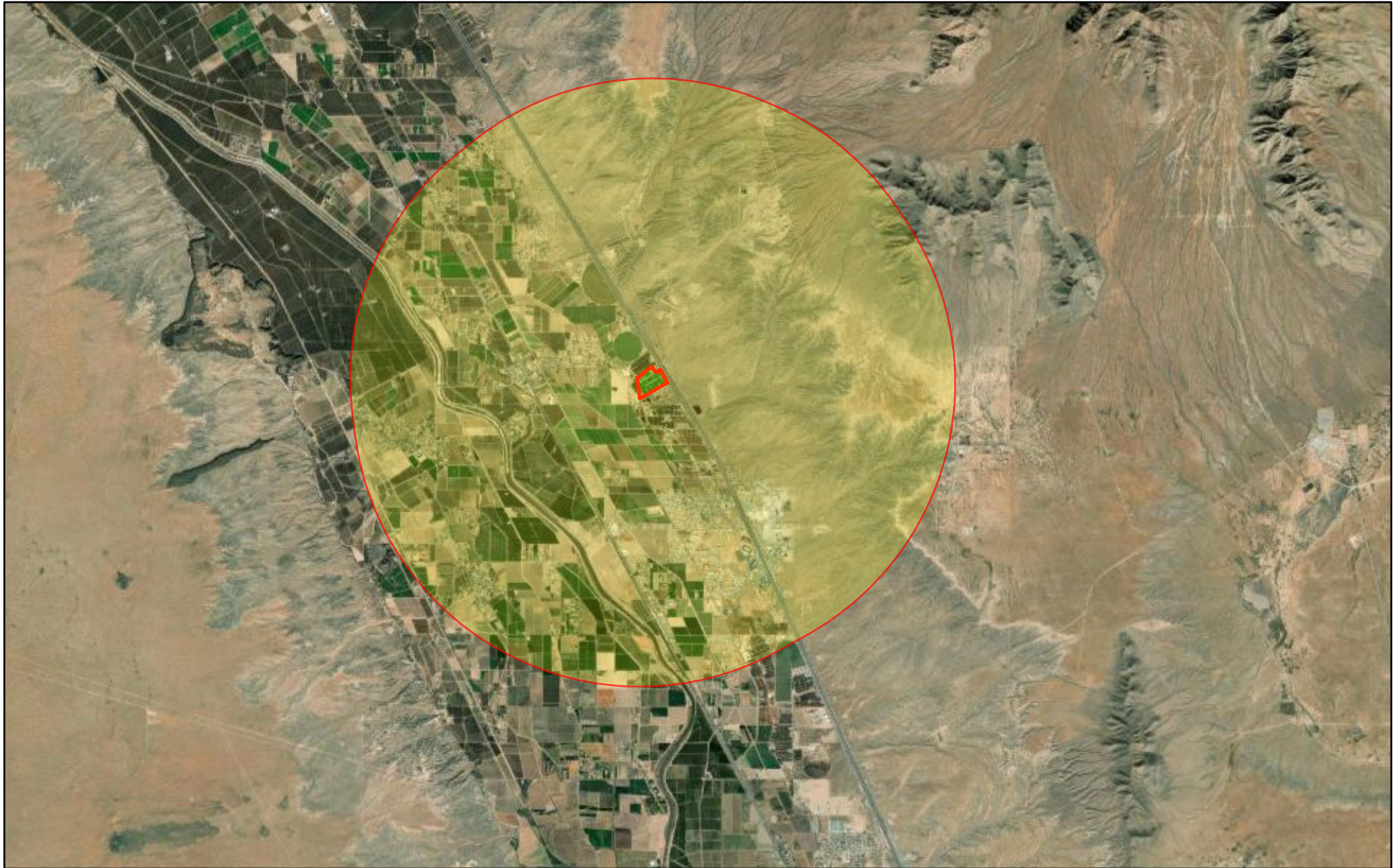
**Data Note:** Detail may not sum to totals due to rounding. Hispanic population can be of any race.

N/A means not available. **Source:** U.S. Census Bureau, American Community Survey (ACS) 2014 - 2018.

\*Population by Language Spoken at Home is available at the census tract summary level and up.



# DP-70 Mountain View Dairy



7/20/2021

 Mountain View Dairy

1:144,448  
0 1 2 4 mi  
0 1.5 3 6 km

Source: Esri, Maxar, GeoEye, Earthstar Geographics, CNES/Airbus DS, USDA, USGS, AeroGRID, IGN, and the GIS User Community