



NEW MEXICO ENVIRONMENT DEPARTMENT
GROUND WATER QUALITY BUREAU



PUBLIC INVOLVEMENT PLAN
(PIP)

Facility Name: URENCO USA

Facility Location: The facility entrance is located at 275 NM-176, 0.64 miles west of the Texas/New Mexico border and 2.84 miles east of the intersection of Andrews Highway (NM-176/NM-284) and South Eunice Highway (NM-18).
Section 32, Township 21S, Range 38E

County: Lea County

Responsible Party: URENCO USA
Lisa Hardison, Manager
P.O. Box 1789
Eunice, NM 88231

Agency: Ground Water Quality Bureau
Pollution Prevention Section

GWQB Action: Permitting - Renewal/Modification
DP-1481

Bureau Contact: Jason Herman, Manager
(575) 649-3871
jason.herman@env.nm.gov or pps.general@env.nm.gov

Main bureau telephone number:
(505) 827-2900

EFFECTIVE DATE: February 22, 2019

REVISION DATE: May 18, 2023

/s/ Jason Herman for

Justin D. Ball, Chief
Ground Water Quality Bureau

Element 1 – Public Involvement Plan (PIP) Overview

The New Mexico Environment Department (“NMED” or “Department”), Ground Water Quality Bureau (“Bureau”) has developed this PIP for the application for renewal and modification of the Ground Water Discharge Permit for the discharges associated with stormwater and industrial wastewater at the URENCO USA facility. Discharges at the facility are not directly associated with the uranium enrichment processes occurring at the facility. This discharge permit is referred to as DP-1481. The United States Nuclear Regulatory Commission (“NRC”) regulates and licenses the uranium enrichment process and byproduct storage at the facility. Prior to licensing the facility, the NRC evaluated the potential impacts of the uranium enrichment process and storage of the byproduct material in the area. The NRC prepared an Environmental Impact Statement including an extensive analysis and evaluation of impacts on Environmental Justice Communities, Minority Populations, and Low-Income Populations. The permittee prepared the EIS in compliance with the National Environmental Policy Act (“NEPA”) and the NRC regulations for implementing NEPA. The published report can be accessed at the following website (<https://www.nrc.gov/info-finder/fc/urenco-enrichment-fac-nm-lc.html>) or by contacting the NRC directly by phone toll free at 800-368-5642 or locally at 301-415-8200.

The purpose of this PIP is to plan for providing public participation opportunities and information that may be needed for the community to participate in the permitting process for this facility. This PIP identifies information about the community and resources needed by the Bureau to incorporate community participation activities into the decision-making process. This PIP is developed in accordance with the Department’s *Public Participation Policy* (“Policy 07-13” or “Policy”), and incorporates the requirements of the Policy, as well as applicable regulatory and statutory public participation requirements.

This PIP implements the “elements” set forth in the Policy. Those elements include:

1. An overview of the Public Involvement Plan for the community affected by the activity
2. Bureau contact names and contact information, specifically for Limited English Proficiency (“LEP”) language assistance services (e.g., translation, interpreters) or for disability accommodations
3. A summary of the regulatory public participation framework associated with discharge permits
4. A description of community/stakeholder groups based on results of a preliminary environmental justice (EJ) screening
5. Details about planned public outreach activities

In developing this PIP, the Bureau assessed community participation needs to ensure appropriate public outreach. This was accomplished by identifying whether there is a combination of environmental and demographic factors that may impact public participation (e.g., low-income community, minority community, LEP individuals, linguistically isolated households). Because the

community located near URENCO USA includes a significant percentage of Spanish speakers, the Bureau will provide appropriate information in both English and Spanish.

Public involvement associated with discharge permits occurs at different stages and in different forms. Public involvement activities required by statute or regulation are mandatory and subject to statutory or regulatory deadlines. Mandatory public involvement activities and associated time requirements relevant to this PIP are noted in the *Table of Mandated Public Involvement Activities* at the end of this PIP.

The Bureau plans to conduct the public involvement activities related to the permitting process outlined in the *Table of Public Involvement Activities* below. The activity timeline and dates are tentative and subject to change.

Table of Public Involvement Activities

Activity	Date
Application Notice (PN-1) See <i>Table of Mandated Public Involvement Activities</i> at the end of this PIP for details.	December 2018
Placement of a hardcopy of the PIP in the local NMED Hobbs field office located at: 2120 N. Alto Hobbs, NM 88240 (575) 397-6910 And at the following Document Repositories: Eunice Public Library 1003 Avenue N Eunice, NM 88231 Hobbs Public Library 509 N Shipp St. Hobbs, NM 88240	January 2020
Notice of availability of draft permit (PN-2) See <i>Table of Mandated Public Involvement Activities</i> .	January 2020

Response to Comments <i>See Table of Mandated Public Involvement Activities.</i>	30 days after the administrative record is complete and all required information is available
Public Hearing Notice <i>See Table of Mandated Public Involvement Activities for details.</i>	At least 30 days prior to meeting
Public Hearing	Beginning at 9:00 am on June 21, 2023, and continuing as needed

All notices for upcoming meetings or hearings will include a statement that any person who requires assistance, an interpreter, or an auxiliary aid to participate in the process may contact a specifically identified Department person to request those services. Requested interpretation services during the meeting and accommodations or services for persons with disabilities will be arranged to the extent possible.

This PIP is a “living” document that may be amended for numerous reasons, including the consideration of public comments and feedback.

Element 2 – Bureau Contact Information

PIP Specific Contacts

The Bureau contact for this discharge permit is:

Jason Herman, Manager
 NMED Ground Water Quality Bureau
 P.O. Box 5469
 Santa Fe, New Mexico 87502-5469
 (575) 649-3871 / jason.herman@env.nm.gov or pps.general@env.nm.gov

Non-English Language Speaker Assistance

All public notices will contain a statement that non-English speakers may call the Bureau contact listed above and request language assistance in order to learn more about this permit or the permitting process. Arrangements may be made for document translation or interpretation related to the permitting process as necessary and as resources allow.

Individuals with Disabilities Assistance

All public notices will contain a statement that disabled individuals may call the Bureau contact listed above and request assistance needed to participate in activities associated with the permitting process.

The following information will be provided in public notices so that hearing-impaired callers can contact the Bureau and ask questions about the activity or proceeding: Toll-free numbers are available for TDD or TTY users to access the New Mexico Relay network (for deaf or hearing-impaired callers), 1-800-659-1779; TTY users: 1-800-659-8331.

Websites

Outreach materials and notices will include links to the following website, where the Bureau's public notices and PIP information are posted:

Ground Water Quality Bureau – <https://www.env.nm.gov/gwqb/public-notice/>

Element 3 – Regulatory Framework for Public Participation Related to the Permitting Process

The public participation regulatory framework associated with the permitting process is identified in the *Table of Mandated Public Involvement Activities* at the end of this PIP. The Table identifies activities subject to statutory or regulatory deadlines, the associated regulatory requirements, and the associated dates or time periods.

Element 4 – Description of Community/Stakeholder Groups Based on the EJSCREEN

EJSCREEN Summary

To provide for adequate public participation opportunities and meaningful involvement of persons in the permitting process, the affected communities must first be identified, informed about proposed environmental actions affecting the community, and invited to share their comments and concerns. The EJSCREEN tool developed by the U.S. Environmental Protection Agency (EPA) helps identify communities that are low income, have minority populations, and have limited English proficiency that may benefit from a variety of approaches for notification and outreach communication. This information is used to help plan for the community's involvement in the public process for environmental activities or actions. In addition to the EJSCREEN results, the Bureau may consider additional information such as the U.S. Census Bureau website or NMED's EJ Mapping Tool.

The Bureau previously considered the affected community to be within a 6-mile radius of the facility. After input from concerned citizens the Bureau now considers the affected community to be those persons living within a 50-mile radius of the discharge site. The 50-mile radius includes all of Lea County in New Mexico and Andrews and Gaines Counties in Texas as well as portions of additional counties in both states. The results of the EJSCREEN American Community Survey ACS Summary Report are attached to this PIP and summarized in the table below. During the revision process the Bureau accessed additional ACS and Decennial Census data including county level data and State level data for New Mexico and Texas. A summary of the ACS and Decennial Census data used to evaluate the LEP community can be found in Appendix A (attached to this PIP).

EJSCREEN Results for the Affected Community

	50-mile radius
Total population	116,230
Total number of households	35,949
Percentage minority population	59%
Percentage Hispanic population	54%
Percentage of the population by race	Population reporting one race: White: 90% Black: 3% American Indian: 1% Asian: 0% Pacific Islander: 0% Some Other Race: 4%
Total number of persons greater than the age of five who speak English "less than very well"	15,423
Percentage of persons greater than the age of five who speak English "less than very well"	15%
Total number of linguistically isolated households	2,962
Percentage of linguistically isolated households (Total number of linguistically isolated households ÷ total number of households) X 100)	8.2%
Languages by percentage in linguistically isolated households	Spanish:93% Other Indo-European languages:6% Asian-Pacific Island languages:0% Other languages:1%
Percent linguistically isolated population, New Mexico*:	5.4%
Per capita income	\$26,627

Per capita income, USA**	\$29,979
--------------------------	----------

* U.S. Census Bureau. 2011-2015 American Community Survey 5-Year Estimates, Table S1602. Limited English Speaking Households. https://factfinder.census.gov/bkmk/table/1.0/en/ACS/15_5YR/S1602/0400000US35 (date of access: 7/26/2018).

** U.S. Census Bureau. 2015 American Community Survey 1-Year Estimates, Table S0201. Selected Population Profile in the United States. https://factfinder.census.gov/bkmk/table/1.0/en/ACS/15_1YR/S0201/0100000US (date of access: 7/26/2018).

The EJSCREEN results indicate that for the affected community the proportion of the population with limited English proficiency (LEP) is significant. The Bureau has therefore performed a LEP assessment for the community and attaches that assessment to this PIP. The LEP community was previously identified to be 100% Spanish speaking and has been revised to 93% Spanish speaking, 6% Other Indo-European speaking, and 1% speaking other languages. The additional LEP populations although identified by the EJScreen results, do not represent a significant population requiring services.

Because the affected community has a significant percentage of persons with difficulties communicating in English, the Bureau will consider the language and communication needs of this community when conducting public outreach and participation activities. To accomplish this the Bureau will provide the same information in Spanish as in English in public comment notices, public meeting notices, and other announcements (e.g., radio broadcasts, brochures, signs, postcards) and will strive to make public participation efforts as inclusive as possible within the Bureau's budget and time limitations. See Element 5 for more specifics on the public outreach and participation activities.

Element 5 – Detailed Actions and Outreach Activities with the Affected Public

Public involvement activities required by statute or regulation for this permitting action are listed in the *Table of Mandated Public Involvement Activities* at the end of this document.

Public Participation – Outreach Activities

The Bureau will conduct the following outreach activities during this permitting process:

- Placement of this PIP on the Bureau website, in nearby NMED field office, and in the document repositories
- Postal mailing and email notices
- Newspaper notices
- Notice posted on NMED website
- Utilize a document repository
- Public hearing

Newspapers utilized in the notification process include:

- Statewide circulation (English): Albuquerque Journal
- Local circulation (English and Spanish): Hobbs News Sun – Lea County

Local, state, and federal government agencies, tribal entities, and land grant officials will be notified about the permitting process. A list of the agencies and officials notified can be provided upon request.

Indian Tribes, Pueblos and Nations will be notified about the permitting action through the contacts maintained by the Indian Affairs Department at the following URLs:

<http://www.iad.state.nm.us/apaches.html>

<http://www.iad.state.nm.us/navajo.html>

<http://www.iad.state.nm.us/pueblos.html>

Timelines and methods for submitting public comments are specified in the *Table of Mandated Public Involvement Activities*. Final discharge permit documents will be available from the Bureau's contact identified in Element 2 of this PIP.

Postal Mailing or E-Mailing of Notices to Persons on the Facility-Specific Mailing List

The Bureau solicits the names and contact information of interested parties with all public notices. The Bureau maintains those names on a Facility-Specific Mailing List and provides the individuals with information about regulatory activities for the facility. Individuals, organizations, and other interested parties are added to the mailing list as requested. All public notices will contain a statement directing interested individuals to contact the Bureau contact for this permit if they want to be added to the facility specific mailing list.

Document Repository

Hard copies of important documents relevant to this permitting action, e.g., the permit application, the draft permit, will be made available at the following location:

Eunice Public Library
1003 Avenue N
Eunice, NM 88231
(575) 394-2336

NMED Hobbs Field Office
2120 N. Alto
Hobbs, NM 88240
(575) 397-6910

Hobbs Public Library
509 N. Shipp St.
Hobbs, NM 88240
(575) 397-9328

The document repository will also be a location where information about how to submit comments and/or participate in any public hearings or meetings will be made available.

Public Meeting

The Bureau will hold a public hearing on the draft permit at 9:00 am on June 21, 2023, and continuing as needed, at the City of Eunice Community Center located at 1115 Avenue I, Eunice, NM 88231. Notice of this hearing will be provided by email and physical mail to the facility list, posting on NMED's website, posting at locations in the community, and newspaper announcements. The hearing public notice will be posted at the following community locations:

Eunice Public Library

1003 Avenue N
Eunice, NM 88231
(575) 394-2336

Desert Rose Florist

1700 Main St,
Eunice, NM 88231
(575) 394-0261

Dollar General

1503 Main St.
Eunice, NM 88231
(575) 394-3294

Police Station

2301 Ave O, Eunice
NM 88231
(575) 394-2020

Family Dollar

914 Main St
Eunice, NM 88231
(575) 602-7161

Post Office

1201 Ave K,
Eunice, NM 88231
(800) 275-8777

Municipal Court

1323 Main St,
Eunice, NM 88231
(575) 394-2635

NMED Hobbs Field Office

2120 N. Alto
Hobbs, NM 88240
(575) 397-6910

Hobbs Public Library

509 N. Shipp St.
Hobbs, NM 88240
(575) 397-9328

Notice for a public meeting or hearing would be translated into Spanish. Notice and outreach materials would include the following information:

"If any person requires other non-English Language Speaker Assistance, assistance for an interpreter, or auxiliary aid (e.g., accommodations for persons who are disabled) to participate in the public meetings related to the permitting process, please contact Jason Herman, Manager, allowing at least 14 days prior to the meeting date, at P.O. Box 5469 Santa Fe, New Mexico 87502-5469, telephone (505) 827-2713 or email Jason.herman@env.nm.gov. TDD or TTY users please access the number via the New Mexico Relay Network, 1-800-659-1779 (voice); TTY users: 1-800-659-8331."

Other means of outreach such as fliers announcing public comment periods and/or public meetings or hearings may be posted in locations throughout the community (e.g., local businesses, schools, libraries) and on the Department's website, at the Bureau's discretion after consideration of public interest and input.

Attachments

- LEP Assessment
- A copy of the EJSCREEN ACS Summary Report, and a map showing the area evaluated
- Additional ACS and Decennial Census data collected for analysis

Table of Mandated Public Involvement Activities

Activity	Dates
<p>Application Notice (PN-1): The first notice of the Bureaus receipt of the permit application – applicant’s obligations at 20.6.2.3108.B – Bureau’s obligations at 20.6.2.3108.E NMAC</p> <ul style="list-style-type: none"> • Signs (PN-1 synopsis¹ in English and Spanish) - Applicant obligation • Mailings to owners of nearby properties - Applicant obligation • Newspaper ads (PN-1 synopsis in English and Spanish)- Applicant obligation • NMED website https://www.env.nm.gov/gwqb/public-notice/ • Notice to government agencies • Notice to interested parties 	<p>Within 30 days of the department deeming the application administratively complete</p>
<p>Permit Notice (PN-2): Notice to the public of the availability of a draft permit for a 30-day review and comment period – the notice will outline the process for requesting a public hearing – obligation at 20.6.2.3108.H through J NMAC</p> <ul style="list-style-type: none"> • NMED website https://www.env.nm.gov/gwqb/public-notice/ • Newspaper ads • Notification of interested parties • Notice to government agencies • Notice to Indian Tribes, Pueblos and Nations 	<p>Within 60 days of the department determining the application is technically complete and drafting a permit.</p>
<p>Public Hearing Notice (if required): Upon the Department’s determination that there is substantial public interest in the permit – obligation at 20.6.2.3108.L NMAC. Notice includes information on how to participate in the hearing, and how to request an interpreter or auxiliary aid if needed.</p> <ul style="list-style-type: none"> • NMED website https://www.env.nm.gov/gwqb/public-notice/ • Newspapers • Notice to interested parties • Notice to government agencies • Notice to Indian Tribes, Pueblos and Nations 	<p>Notice of the hearing shall occur at least 30 days prior to the hearing.</p>

¹ Suitable for display, the abbreviated format of the PN-1 synopsis does not contain all the information provided by a full public notice, e.g, language assistance or non-discrimination information.

<p>Response to Comments (if comments received): Upon the Secretary's decision regarding issuance of a discharge permit – obligation at 20.6.2.3109.B NMAC. The Response to Comments shall specify which provisions, if any, in the draft permit were changed and the reasons for the change, and shall briefly describe and respond to all significant comments on the draft permit raised during the public comment period or at any hearing. The Secretary shall notify persons who participated in the permitting action by mail or email of the action taken and the reasons for such action and shall include a copy of the Response to Comments.</p>	<p>Response is issued 30 days after the administrative record is complete and all required information is available</p>
--	---

Limited English Proficiency (LEP) Assessment

Facility: URENCO USA, DP-1481

Factor 1: The Number and Proportion of LEP Individuals Eligible to be Served or Likely to be Encountered in Community of Concern

See Public Involvement Plan (PIP), Table of EJSCREEN Results for the Affected Community.

Conclusions:

1. The number of LEP individuals (persons over the age of 5 who speak English “less than very well” in the affected community) is 15,423.
2. The percentage of LEP individuals in the affected community is 15%.
3. The percentage of linguistically isolated households is 8.2%, which is greater than the statewide average.
4. Spanish is the predominant non-English language spoken by LEP persons.
5. Historical participation: The Bureau maintains a facility-specific mailing list. The current mailing list for the facility includes 13 persons or entities, including Concerned Citizens for Nuclear Safety and Citizens Against Radioactive Dumping. A review of the administrative record for this facility indicates considerable public interest/participation overall during the past 15 years. The portion of that public interest attributable to the LEP community cannot be determined from the record.

Factor 2: Frequency with which LEP Individuals Might Come in Contact with the Program

Contact with the discharge permitting process primarily occurs when a permit application is under review. The GWQB provides notice to the public and encourages participation. Individuals may participate by requesting information, submitting comments on draft permits, requesting hearings, and taking part in hearings. Some permits generate considerable public interest, but participation is low for most permits. Historical participation in permitting activities for this facility is summarized under Factor 1.

Conclusion:

Although LEP participation has been limited, given the demographics of the area and the considerable overall public interest in this facility, the Bureau considers the potential for LEP contact with the permitting process to be “occasional”.

Factor 3: Nature and Importance of the Activity or Service Provided by the Program

The permitting activity is deemed by the GWQB to be “important” to NMED, the impacted community, and the State of New Mexico. The permitting activity is important to NMED because the permit establishes site-specific requirements that must be met to ensure protection of public health and groundwater quality and provides a means to enforce those requirements. The permitting activity is important to the impacted community because poorly-operated waste

treatment facilities have the potential to pose a public nuisance and adversely affect the quality of life of people living in the vicinity of the facility. The permitting activity is important to the State of New Mexico because establishment of effective permits ensures that discharges will not impact the State's limited groundwater resources and that waste disposal is conducted in a consistent manner throughout the State.

Conclusion:

The GWQB considers the permitting activity “important” to NMED, to the state as a whole, and to the impacted community.

Factor 4: Resources Available to NMED for LEP Services and Associated Costs

For outreach to LEP communities associated with this permit action, NMED employs an in-house Spanish translator/interpreter and utilizes a phone interpretation service to assist during direct communication between LEP individuals and NMED staff. The costs of newspaper publication of public notice in Spanish and of interpretive services for a public meeting or hearing are being incorporated into the Bureau’s budget, to the extent possible. Fees collected from the permittee in accordance with the schedule at 20.6.2.3114 NMAC are not sufficient to cover these costs.

Conclusion:

The Bureau can accommodate the costs of the LEP services identified in this plan. If additional services are requested, the budgetary implications will be reviewed.

LEP Services Plan:

The Bureau plans to:

1. Translate the Public Notice Two (PN-2) and any subsequent public notices into Spanish and publish in a paper serving the local community.
2. Translate the Permit Summary into Spanish and include a copy of the summary at each document repository.
3. Provide interpretive services at any public meeting or public hearing, if requested.
4. Interact with members of the LEP community using certified interpreters, when needed.

The Bureau will consider requests from members of the affected community for additional LEP services.

Location: User-specified polygonal location
Ring (buffer): 50-miles radius
Description: DP-1481 URENCO USA 50 Mile Radius

Summary of ACS Estimates		2013 - 2017	
Population		116,230	
Population Density (per sq. mile)		17	
Minority Population		68,778	
% Minority		59%	
Households		35,949	
Housing Units		41,787	
Housing Units Built Before 1950		3,206	
Per Capita Income		26,627	
Land Area (sq. miles) (Source: SF1)		6,657.22	
% Land Area		100%	
Water Area (sq. miles) (Source: SF1)		10.25	
% Water Area		0%	

	2013 - 2017 ACS Estimates	Percent	MOE (±)
Population by Race			
Total	116,230	100%	33
Population Reporting One Race	114,059	98%	1,969
White	104,733	90%	751
Black	3,626	3%	286
American Indian	700	1%	155
Asian	159	0%	63
Pacific Islander	50	0%	41
Some Other Race	4,791	4%	673
Population Reporting Two or More Races	2,170	2%	395
Total Hispanic Population	63,252	54%	13
Total Non-Hispanic Population	52,978		
White Alone	47,452	41%	143
Black Alone	3,238	3%	265
American Indian Alone	545	0%	125
Non-Hispanic Asian Alone	159	0%	63
Pacific Islander Alone	42	0%	37
Other Race Alone	183	0%	137
Two or More Races Alone	1,360	1%	290
Population by Sex			
Male	59,537	51%	163
Female	56,693	49%	163
Population by Age			
Age 0-4	10,120	9%	194
Age 0-17	36,457	31%	575
Age 18+	79,773	69%	886
Age 65+	12,083	10%	423

Data Note: Detail may not sum to totals due to rounding. Hispanic population can be of any race.

N/A means not available. **Source:** U.S. Census Bureau, American Community Survey (ACS) 2013 - 2017

Location: User-specified polygonal location

Ring (buffer): 50-miles radius

Description: DP-1481 URENCO USA 50 Mile Radius

	2013 - 2017 ACS Estimates	Percent	MOE (±)
Population 25+ by Educational Attainment			
Total	68,257	100%	191
Less than 9th Grade	10,842	16%	487
9th - 12th Grade, No Diploma	8,935	13%	477
High School Graduate	21,598	32%	635
Some College, No Degree	18,527	27%	684
Associate Degree	4,484	7%	348
Bachelor's Degree or more	8,354	12%	467
Population Age 5+ Years by Ability to Speak English			
Total	106,110	100%	95
Speak only English	59,321	56%	825
Non-English at Home ¹⁺²⁺³⁺⁴	46,789	44%	855
¹ Speak English "very well"	31,365	30%	885
² Speak English "well"	6,254	6%	421
³ Speak English "not well"	6,279	6%	409
⁴ Speak English "not at all"	2,890	3%	269
³⁺⁴ Speak English "less than well"	9,170	9%	489
²⁺³⁺⁴ Speak English "less than very well"	15,423	15%	644
Linguistically Isolated Households*			
Total	2,962	100%	259
Speak Spanish	2,755	93%	255
Speak Other Indo-European Languages	175	6%	98
Speak Asian-Pacific Island Languages	10	0%	21
Speak Other Languages	22	1%	37
Households by Household Income			
Household Income Base	35,949	100%	419
< \$15,000	4,214	12%	337
\$15,000 - \$25,000	3,214	9%	288
\$25,000 - \$50,000	7,571	21%	425
\$50,000 - \$75,000	7,183	20%	483
\$75,000 +	13,767	38%	574
Occupied Housing Units by Tenure			
Total	35,949	100%	419
Owner Occupied	25,673	71%	476
Renter Occupied	10,276	29%	506
Employed Population Age 16+ Years			
Total	83,495	100%	205
In Labor Force	51,824	62%	679
Civilian Unemployed in Labor Force	2,886	3%	320
Not In Labor Force	31,671	38%	687

Data Note: Detail may not sum to totals due to rounding. Hispanic population can be of anyrace.

N/A means not available. **Source:** U.S. Census Bureau, American Community Survey (ACS)

*Households in which no one 14 and over speaks English "very well" or speaks English only.

Location: User-specified polygonal location

Ring (buffer): 50-miles radius

Description: DP-1481 URENCO USA 50 Mile Radius

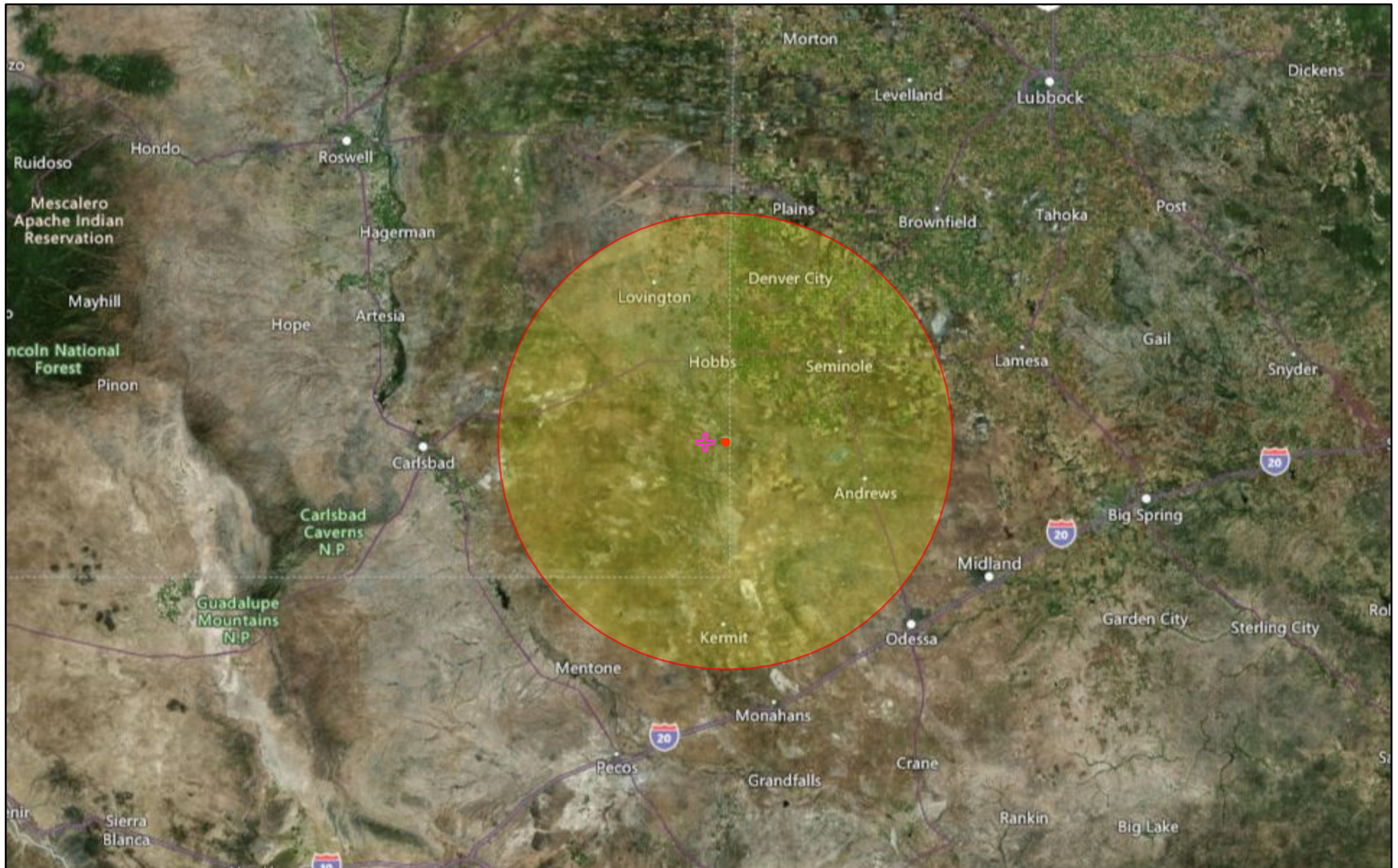
	2013 - 2017 ACS Estimates	Percent	MOE (±)
Population by Language Spoken at Home*			
Total (persons age 5 and above)	106,110	100%	95
English	59,321	56%	979
Spanish	41,413	39%	1,015
French	136	0%	63
French Creole	N/A	N/A	N/A
Italian	N/A	N/A	N/A
Portuguese	N/A	N/A	N/A
German	4,729	4%	560
Yiddish	N/A	N/A	N/A
Other West Germanic	N/A	N/A	N/A
Scandinavian	N/A	N/A	N/A
Greek	N/A	N/A	N/A
Russian	N/A	N/A	N/A
Polish	N/A	N/A	N/A
Serbo-Croatian	N/A	N/A	N/A
Other Slavic	N/A	N/A	N/A
Armenian	N/A	N/A	N/A
Persian	N/A	N/A	N/A
Gujarathi	N/A	N/A	N/A
Hindi	N/A	N/A	N/A
Urdu	N/A	N/A	N/A
Other Indic	N/A	N/A	N/A
Other Indo-European	77	0%	81
Chinese	19	0%	21
Japanese	N/A	N/A	N/A
Korean	0	0%	28
Mon-Khmer, Cambodian	N/A	N/A	N/A
Hmong	N/A	N/A	N/A
Thai	N/A	N/A	N/A
Laotian	N/A	N/A	N/A
Vietnamese	33	0%	157
Other Asian	49	0%	64
Tagalog	30	0%	120
Other Pacific Island	N/A	N/A	N/A
Navajo	N/A	N/A	N/A
Other Native American	N/A	N/A	N/A
Hungarian	N/A	N/A	N/A
Arabic	32	0%	54
Hebrew	N/A	N/A	N/A
African	N/A	N/A	N/A
Other and non-specified	262	0%	82
Total Non-English	46,789	44%	984

Data Note: Detail may not sum to totals due to rounding. Hispanic population can be of any race.

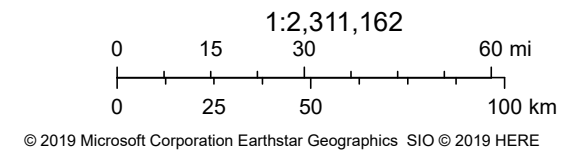
N/A means not available. **Source:** U.S. Census Bureau, American Community Survey (ACS) 2013 - 2017.

*Population by Language Spoken at Home is available at the census tract summary level and up.

DP-1481 URENCO USA 50 Mile Radius



January 1, 2020



APPENDIX A	Demographics and LEP Statistics for DP-1481 Affected Areas													
	Comparative Geographies						Affected Area by County						Affected Area	
	United States of America		New Mexico		Texas		Lea County		Andrews County		Gaines County		Total	
	Estimated		Estimated		Estimated		Estimated		Estimated		Estimated		Estimated	
Pop.	%	Pop	%	Pop	%	Pop	%	Pop	%	Pop	%	Pop	%	
Total population	327,167,439	XXX	2,095,428	XXX	28,701,845	XXX	69,611	XXX	17,577	XXX	19,889	XXX	107,077	XXX
Total number of households	118,825,921	XXX	794,093	XXX	9,776,083	XXX	22,029	XXX	5,413	XXX	5,716	XXX	33,158	XXX
Hispanic population	56,510,571	17.6%	1,004,103	48.2%	10,673,909	38.9%	39,501	56.8%	9,737	55.4%	8,066	40.6%	57,304	53.5%
Percentage of the population by race reporting														
Population reporting one race:														
White:	236,173,020	73.0%	1,599,938	74.2%	21,099,066	74.6%	63,369	88.2%	18,607	91.8%	18,607	93.6%	100,583	93.9%
Black:	41,617,764	12.7%	46,064	2.0%	3,527,027	12.0%	2,597	3.8%	484	2.1%	484	2.4%	3,565	3.3%
American Indian:	2,801,587	0.8%	200,659	9.5%	149,997	0.5%	546	0.8%	42	0.1%	42	0.2%	630	0.6%
Asian:	18,415,198	5.4%	34,155	1.4%	1,430,857	4.5%	732	0.0%	91	0.2%	91	0.5%	914	0.9%
Pacific Islander:	626,054	0.2%	2,465	0.1%	21,463	0.1%	0	0.1%	8	0.1%	8	0.0%	16	0.0%
Some Other Race:	16,253,785	4.8%	144,961	0.3%	1,709,445	5.8%	1,318	4.9%	534	3.9%	534	2.7%	2,386	2.2%
Total number and percentage of persons greater than the age of five who speak English “less than very well”	25,627,417	7.8%	190,661	9.1%	3,673,943	12.8%	24,014	34.5%	2,124	12.1%	3,321	16.7%	29,459	27.5%
Total number and Percentage of linguistically isolated households	5,305,440	4.5%	40,182	5.2%	743,837	7.9%	1,391	6.3%	482	8.9%	609	10.7%	2,482	7.5%
Languages by percentage in linguistically isolated households														
Spanish:	3,191,985	60.2%	33,461	83.3%	629,225	84.6%	880	63.3%	473	98.1%	440	72.2%	1,793	72.2%
Other Indo-European languages:	806,456	15.2%	1,221	3.0%	29,095	3.9%	103	7.4%	9	1.9%	166	27.3%	278	11.2%
Asian-Pacific Island languages:	1,084,682	20.4%	1,530	3.8%	70,578	9.5%	42	3.0%	0	0.0%	3	0.5%	45	1.8%
Other languages:	222,317	4.2%	3,970	9.9%	14,939	2.0%	106	7.6%	0	0.0%	0	0.0%	106	4.3%
Per capita income	\$33,831		\$26,529		\$30,641		\$23,318		\$29,903		\$22,656			
Sources Used														
Source Census Table					ACS Product					Geographic Area				
DP05: ACS DEMOGRAPHIC AND HOUSING ESTIMATES					2013-2017 American Community Survey 5-Year Estimates					Texas County				
DP05: ACS DEMOGRAPHIC AND HOUSING ESTIMATES					2018: ACS 1-Year Estimates Data Profiles					Country, State and NM County				
S1602: LIMITED ENGLISH SPEAKING HOUSEHOLDS					2013-2017 American Community Survey 5-Year Estimates					Texas County				
S1602: LIMITED ENGLISH SPEAKING HOUSEHOLDS					2018: ACS 1-Year Estimates Data Profiles					Country, State and NM County				
DP02: SELECTED SOCIAL CHARACTERISTICS IN THE UNITED STATES					2013-2017 American Community Survey 5-Year Estimates					Texas County				
DP02: SELECTED SOCIAL CHARACTERISTICS IN THE UNITED STATES					2018: ACS 1-Year Estimates Data Profiles					Country, State and NM County				
B19301: PER CAPITA INCOME IN THE PAST 12 MONTHS (IN 2017 INFLATION-ADJUSTED DOLLARS)					2013-2017 American Community Survey 5-Year Estimates					Texas County				
B19301: PER CAPITA INCOME IN THE PAST 12 MONTHS (IN 2018 INFLATION-ADJUSTED DOLLARS)					2018: ACS 1-Year Estimates Data Profiles					Country, State and NM County				

APPENDIX A	2010 Decennial Census Demographics for DP-1481 Affected Areas													
	Comparative Geographies						Affected Area by County						Affected Area	
	United States of America		New Mexico		Texas		Lea County		Andrews County		Gaines County		Total	
	Estimated Pop.	%	Estimated Pop	%	Estimated Pop	%	Estimated Pop	%	Estimated Pop	%	Estimated Pop	%	Estimated Pop	%
Total population	308,745,538	100.0%	2,059,179	100.0%	25,145,561	100.0%	64,727	XXX	14,786	XXX	17,526	XXX	97,039	XXX
Total number of households														
Hispanic population	50,477,594	16.3%	953,403	46.3%	9,460,921	37.6%	33,063	51.1%	7,195	48.7%	6,413	36.6%	46,671	48.1%
Percentage of the population by race reporting														
Population reporting one race:														
White:	223,553,265	72.4%	1,407,876	68.4%	17,701,552	70.4%	48,539	75.0%	11,749	79.5%	14,726	84.0%	75,014	77.3%
Black:	38,929,319	12.6%	42,550	2.1%	2,979,598	11.8%	2,641	4.1%	222	1.5%	305	1.7%	3,168	3.3%
American Indian:	29,322,248	0.9%	193,222	9.4%	170,972	0.7%	770	1.2%	142	1.0%	102	0.6%	1,014	1.0%
Asian:	14,674,252	4.8%	28,208	1.4%	964,596	3.8%	326	0.5%	91	0.6%	44	0.3%	461	0.5%
Pacific Islander:	540,013	0.2%	1,810	0.1%	21,656	0.1%	36	0.1%	1	0.0%	0	0.0%	37	0.0%
Some Other Race:	19,107,368	6.2%	308,503	15.0%	2,628,186	10.5%	10,764	16.6%	2,289	15.5%	1,996	11.4%	15,049	15.5%
Sources Used														
Table and Geography				File Accessed										
QT-P3-Geography-United States: Race and Hispanic or Latino Origin: 2010				2010 Census Summary File 1										
QT-P3-Geography-New Mexico: Race and Hispanic or Latino Origin: 2010				2010 Census Summary File 1										
QT-P3-Geography-Texas: Race and Hispanic or Latino Origin: 2010				2010 Census Summary File 1										
QT-P3-Geography-Lea County, New Mexico: Race and Hispanic or Latino Origin: 2010				2010 Census Summary File 1										
QT-P3-Geography-Andrews County, Texas: Race and Hispanic or Latino Origin: 2010				2010 Census Summary File 1										
QT-P3-Geography-Gaines County, Texas: Race and Hispanic or Latino Origin: 2010				2010 Census Summary File 1										
P3: RACE - Universe: Total population				2010 Census Summary File 1										
P1: TOTAL POPULATION - Universe: Total population				2010 Census Summary File 1										