



**NEW MEXICO ENVIRONMENT DEPARTMENT**  
**GROUND WATER QUALITY BUREAU**  
**PUBLIC INVOLVEMENT PLAN**  
**(PIP)**



**Facility Name:** Santa Fe Brewing Company II

**Facility Location:** 37 Fire Place  
Santa Fe, NM  
Sections 24 & 25, Township 16N, Range 08E

**County:** Santa Fe County

**Responsible Party:** Brian Lock  
P.O. Box 29773  
Santa Fe, NM 87592

**Agency:** Ground Water Quality Bureau  
Pollution Prevention Section

**GWQB Action:** Permitting - Renewal/Modification  
DP-1126

**Bureau Contact:** Avery Young, Geoscientist  
(505) 827-2909  
Avery.Young@state.nm.us

Main bureau telephone number:  
(505) 827-2900

**EFFECTIVE DATE:** June 10, 2019

**REVISION DATE:** N/A

/s/ Pamela E. Homer for Steve Pullen

---

**Steve Pullen, Manager**  
**Pollution Prevention Section**

## Element 1 – Public Involvement Plan (PIP) Overview

The New Mexico Environment Department (NMED or Department), Ground Water Quality Bureau (Bureau) has developed this PIP for the application for renewal and modification of the Ground Water Discharge Permit for Santa Fe Brewing Co. The permit for this facility is referred to as DP-1126.

The purpose of this PIP is to plan for providing public participation opportunities and information that may be needed for the community to participate in the permitting process for this facility. This PIP identifies information about the community and resources needed by the Bureau to incorporate community participation activities into the decision-making process. This PIP is developed in accordance with the Department's *Public Participation Policy* (Policy 07-13 or Policy), and incorporates the requirements of the Policy, as well as applicable regulatory and statutory public participation requirements.

This PIP implements the “elements” set forth in the Policy. Those elements include:

1. An overview of the Public Involvement Plan for the community affected by the activity
2. Bureau contact names and contact information, specifically for Limited English Proficiency (LEP) language assistance services (e.g., translation, interpreters) or for disability accommodations
3. A summary of the regulatory public participation framework associated with discharge permits
4. A description of community/stakeholder groups based on results of a preliminary environmental justice (EJ) screening
5. Details about planned public outreach activities

In developing this PIP, community participation needs were assessed to ensure appropriate public outreach. This was accomplished by identifying whether there is a combination of environmental and demographic factors that may impact public participation (e.g., low income community, minority community, LEP individuals, linguistically isolated households). Because the community located near Santa Fe Brewing Co. includes a significant percentage of Spanish speakers, the Bureau will provide appropriate information in both English and Spanish.

Public involvement associated with discharge permits occurs at different stages and in different forms. Public involvement activities required by statute or regulation are mandatory and subject to statutory or regulatory deadlines. Mandatory public involvement activities and associated time requirements relevant to this PIP are noted in the *Table of Mandated Public Involvement Activities* at the end of this PIP.

The Bureau plans to conduct the public involvement activities related to the permitting process outlined in the *Table of Public Involvement Activities* below. The activity timeline and dates are tentative and subject to change.

**Table of Public Involvement Activities**

<b>Activity</b>	<b>Date</b>
<b>Application Notice (PN-1)</b> See <i>Table of Mandated Public Involvement Activities</i> at the end of this PIP for details.	June 2019
<b>Placement of a hardcopy of the PIP in the local NMED office:</b> NMED District II Office 540 Camino Edward Ortiz Santa Fe, NM 87507 Phone (505) 827-1840 Fax (505) 827-1839	July 2019
<b>Notice of availability of draft permit (PN-2)</b> See <i>Table of Mandated Public Involvement Activities</i> .	Within 60 days of determining the application is technically complete. Date to be determined.

All notices for upcoming meetings or hearings will include a statement that any person who requires assistance, an interpreter, or an auxiliary aid to participate in the process may contact a specifically identified Department person to request those services. Requested interpretation services during the meeting and accommodations or services for persons with disabilities will be arranged to the extent possible.

This PIP is a “living” document that may be amended for numerous reasons, including the consideration of public comments and feedback.

## **Element 2 – Bureau Contact Information**

### **PIP Specific Contacts**

The Bureau contact for this discharge permit is:

Avery Young, Geoscientist  
NMED Ground Water Quality Bureau  
P.O. Box 5469, Santa Fe, NM 87502-5469  
(505) 827-2909  
Avery.Young@state.nm.us

### **Non-English Language Speaker Assistance**

All public notices will contain a statement that non-English speakers may call the Bureau contact listed above and request language assistance in order to learn more about this permit or the

permitting process. Arrangements may be made for document translation or interpretation related to the permitting process as necessary and as resources allow.

### **Individuals with Disabilities Assistance**

All public notices will contain a statement that disabled individuals may call the Bureau contact listed above and request assistance needed to participate in activities associated with the permitting process.

The following information will be provided in public notices so that hearing-impaired callers can contact the Bureau and ask questions about the activity or proceeding: Toll-free numbers are available for TDD or TTY users to access the New Mexico Relay network (for deaf or hearing-impaired callers), 1-800-659-1779; TTY users: 1-800-659-8331.

### **Websites**

Outreach materials and notices will include links to the following website, where the Bureau's public notices and PIP information are posted:

Ground Water Quality Bureau – <https://www.env.nm.gov/gwqb/public-notice/>

## **Element 3 – Regulatory Framework for Public Participation Related to the Permitting Process**

The public participation regulatory framework associated with the permitting process is identified in the *Table of Mandated Public Involvement Activities* at the end of this PIP. The Table identifies activities subject to statutory or regulatory deadlines, the associated regulatory requirements, and the associated dates or time periods.

## **Element 4 – Description of Community/Stakeholder Groups Based on the EJSCREEN**

### **EJSCREEN Summary**

To provide for adequate public participation opportunities and meaningful involvement of persons in the permitting process, the affected communities must first be identified, informed about proposed environmental actions affecting the community, and invited to share their comments and concerns. The EJSCREEN tool developed by the U.S. Environmental Protection Agency (EPA) helps identify communities that are low income, have minority populations, and have limited English proficiency that may benefit from a variety of approaches for notification and outreach communication. This information is used to help plan for the community's involvement in the public process for environmental activities or actions. In addition to the EJSCREEN results,

the Bureau may consider additional information such as the U.S. Census Bureau website or NMED's EJ Mapping Tool.

The Bureau considers the affected community to be those persons living within a 4-mile radius of the discharge site. The results of the EJSCREEN American Community Survey (ACS) Summary Report (attached to this PIP) are summarized in the table below.

#### **EJSCREEN Results for the Affected Community**

Total population	39,089
Total number of households	12,869
Percentage minority population	79%
Percentage Hispanic population	74%
Percentage of the population by race	Population reporting one race: White: ..... 81% Black: ..... 1% American Indian: ..... 2% Asian: ..... 2% Pacific Islander: ..... 0% Some Other Race: ..... 11%
Total number of persons greater than the age of five who speak English "less than very well"	6,885
Percentage of persons greater than the age of five who speak English "less than very well"	19%
Total number of linguistically isolated households	1,061
Percentage of linguistically isolated households (Total number of linguistically isolated households ÷ total number of households X 100)	8.2%
Languages by percentage in linguistically isolated households	Spanish: ..... 98% Other Indo-European languages: ..... 2% Other languages: ..... 1%
Percent linguistically isolated population, New Mexico*:	5.4%
Per capita income	\$26,531
Per capita income, USA**	\$29,979

\* U.S. Census Bureau. 2011-2015 American Community Survey 5-Year Estimates, Table S1602. Limited English Speaking Households. [https://factfinder.census.gov/bkmk/table/1.0/en/ACS/15\\_5YR/S1602/0400000US35](https://factfinder.census.gov/bkmk/table/1.0/en/ACS/15_5YR/S1602/0400000US35) (date of access: 7/26/2018).

\*\* U.S. Census Bureau. 2015 American Community Survey 1-Year Estimates, Table S0201. Selected Population Profile in the United States. [https://factfinder.census.gov/bkmk/table/1.0/en/ACS/15\\_1YR/S0201/0100000US](https://factfinder.census.gov/bkmk/table/1.0/en/ACS/15_1YR/S0201/0100000US) (date of access: 7/26/2018).

The EJSCREEN results indicate that for the affected community the proportion of the population with limited English proficiency (LEP) is significant. The Bureau has therefore performed a LEP assessment for the community and attaches that assessment to this PIP.

Because the affected community has a significant percentage of persons with difficulties communicating in English, the Bureau will consider the language and communication needs of this community when conducting public outreach and participation activities. To accomplish this the Bureau will provide the same information in Spanish as in English in public comment notices, public meeting notices, and other announcements (e.g., radio broadcasts, brochures, signs, postcards) and will strive to make public participation efforts as inclusive as possible, within the Bureau's budget and time limitations. See Element 5 for more specifics on the public outreach and participation activities.

## **Element 5 – Detailed Actions and Outreach Activities with the Affected Public**

Public involvement activities required by statute or regulation for this permitting action are listed in the *Table of Mandated Public Involvement Activities* at the end of this document.

### **Public Participation – Outreach Activities**

The Bureau will conduct the following outreach activities during this permitting process:

- Placement of this PIP on the Bureau website and in nearby NMED field office
- Postal mailing and email notices
- Newspaper notices
- Notice posted on NMED website

Newspapers utilized in the notification process include:

.

- Statewide circulation (English): Albuquerque Journal
- Local circulation (English and Spanish): Santa Fe New Mexican – Santa Fe County

Local, state, and federal government agencies, tribal entities, and land grant officials will be notified about the permitting process. A list of the agencies and officials notified can be provided upon request.

Indian Tribes, Pueblos and Nations will be notified about the permitting action through the contacts maintained by the Indian Affairs Department at the following URLs:

<http://www.iad.state.nm.us/apaches.html>

<http://www.iad.state.nm.us/navajo.html>

<http://www.iad.state.nm.us/pueblos.html>

Timelines and methods for submitting public comments are specified in the *Table of Mandated Public Involvement Activities*. Final discharge permit documents will be available from the Bureau's contact identified in Element 2 of this PIP.

#### **Postal Mailing or E-Mailing of Notices to Persons on the Facility-Specific Mailing List**

The Bureau solicits the names and contact information of interested parties with all public notices. The Bureau maintains those names on a Facility-Specific Mailing List and provides the individuals with information about regulatory activities for the facility. Individuals, organizations, and other interested parties are added to the mailing list as requested. All public notices will contain a statement directing interested individuals to contact the Bureau contact for this permit if they want to be added to the facility specific mailing list.

Other means of outreach such as fliers announcing public comment periods and/or public meetings or hearings may be posted in locations throughout the community (e.g., local businesses, schools, libraries) and on the Department's website, at the Bureau's discretion after consideration of public interest and input.

#### **Attachments**

- LEP Assessment
- A copy of the EJSCREEN ACS Summary Report and a map showing the area evaluated

**Table of Mandated Public Involvement Activities**

Activity	Dates
<p>Application Notice (PN-1): The first notice of the Bureau's receipt of the permit application – applicant's obligations at 20.6.2.3108.B – Bureau's obligations at 20.6.2.3108.E NMAC</p> <ul style="list-style-type: none"> <li>• Signs (PN-1 synopsis<sup>1</sup> in English and Spanish) - Applicant obligation</li> <li>• Mailings to owners of nearby properties - Applicant obligation</li> <li>• Newspaper ads (PN-1 synopsis in English and Spanish)- Applicant obligation</li> <li>• NMED website <a href="https://www.env.nm.gov/qwqb/public-notice/">https://www.env.nm.gov/qwqb/public-notice/</a></li> <li>• Notice to government agencies</li> <li>• Notice to interested parties</li> </ul>	<p>Within 30 days of the department deeming the application administratively complete</p>
<p>Permit Notice (PN-2): Notice to the public of the availability of a draft permit for a 30-day review and comment period – the notice will outline the process for requesting a public hearing – obligation at 20.6.2.3108.H through J NMAC</p> <ul style="list-style-type: none"> <li>• NMED website <a href="https://www.env.nm.gov/qwqb/public-notice/">https://www.env.nm.gov/qwqb/public-notice/</a></li> <li>• Newspaper ads</li> <li>• Notification of interested parties</li> <li>• Notice to government agencies</li> <li>• Notice to Indian Tribes, Pueblos and Nations</li> </ul>	<p>Within 60 days of the department determining the application is technically complete and drafting a permit.</p>
<p>Public Hearing Notice (if required): Upon the Department's determination that there is substantial public interest in the permit – obligation at 20.6.2.3108.L NMAC. Notice includes information on how to participate in the hearing, and how to request an interpreter or auxiliary aid if needed.</p> <ul style="list-style-type: none"> <li>• NMED website <a href="https://www.env.nm.gov/qwqb/public-notice/">https://www.env.nm.gov/qwqb/public-notice/</a></li> <li>• Newspapers</li> <li>• Notice to interested parties</li> <li>• Notice to government agencies</li> <li>• Notice to Indian Tribes, Pueblos and Nations</li> </ul>	<p>Notice of the hearing shall occur at least 30 days prior to the hearing.</p>

<sup>1</sup> Suitable for display, the abbreviated format of the PN-1 synopsis does not contain all the information provided by a full public notice, e.g., language assistance or non-discrimination information.



## **Limited English Proficiency (LEP) Assessment**

**Facility:** Santa Fe Brewing Company, DP-1126

### **Factor 1: The Number and Proportion of LEP Individuals Eligible to be Served or Likely to be Encountered in Community of Concern**

See Public Involvement Plan (PIP), Table of EJSCREEN Results for the Affected Community.

#### Conclusions:

1. The number of LEP individuals (persons over the age of 5 who speak English “less than very well” in the affected community) is 6,885.
2. The percentage of LEP individuals in the affected community is 19%.
3. The percentage of linguistically isolated households is 8.2%, which is greater than the statewide average.
4. Spanish is the predominant non-English language spoken by LEP persons.
5. Historical participation: The Bureau maintains a facility-specific mailing list. The current mailing list for the facility includes 1 person or entity. A review of the administrative record for this facility indicates limited public interest/participation overall during the past 10 years. The portion of that public interest attributable to the LEP community cannot be determined from the record.

### **Factor 2: Frequency with which LEP Individuals Might Come in Contact with the Program**

Contact with the discharge permitting process primarily occurs when a permit application is under review. The GWQB provides notice to the public and encourages participation. Individuals may participate by requesting information, submitting comments on draft permits, requesting hearings, and taking part in hearings. Some permits generate considerable public interest, but participation is low for most permits. Historical participation in permitting activities for this facility is summarized under Factor 1.

#### Conclusion:

LEP participation and overall public interest in this facility have been limited historically. Based on this record, the Bureau considers the potential for LEP contact with the permitting process to be “infrequent.”

### **Factor 3: Nature and Importance of the Activity or Service Provided by the Program**

The permitting activity is deemed by the GWQB to be “important” to NMED, the impacted community, and the State of New Mexico. The permitting activity is important to NMED because the permit establishes site-specific requirements that must be met to ensure protection of public health and groundwater quality and provides a means to enforce those requirements. The permitting activity is important to the impacted community because poorly-operated waste treatment facilities have the potential to pose a public nuisance and adversely affect the quality

of life of people living in the vicinity of the facility. The permitting activity is important to the State of New Mexico because establishment of effective permits ensures that discharges will not impact the State's limited groundwater resources and that waste disposal is conducted in a consistent manner throughout the State.

Conclusion:

The GWQB considers the permitting activity “important” to NMED, to the state as a whole, and to the impacted community.

**Factor 4: Resources Available to NMED for LEP Services and Associated Costs**

For outreach to LEP communities associated with this permit action, NMED employs an in-house Spanish translator/interpreter and utilizes a phone interpretation service to assist during direct communication between LEP individuals and NMED staff. The costs of newspaper publication of public notice in Spanish and of interpretive services for a public meeting or hearing are being incorporated into the Bureau’s budget, to the extent possible. Fees collected from the permittee in accordance with the schedule at 20.6.2.3114 NMAC are not sufficient to cover these costs.

Conclusion:

The Bureau can accommodate the costs of the LEP services identified in this plan. If additional services are requested, the budgetary implications will be reviewed.

**LEP Services Plan:**

The Bureau plans to:

1. Translate the Public Notice Two (PN-2) and any subsequent public notices into Spanish.
2. Provide interpretive services at any public meeting or public hearing, if requested.
3. Interact with members of the LEP community using certified interpreters, when needed.

The Bureau will consider requests from members of the affected community for additional LEP services.

Location: User-specified linear location  
 Ring (buffer): 4-mile radius  
 Description: Santa Fe Brewing Company

Summary of ACS Estimates		2012 - 2016	
Population		39,089	
Population Density (per sq. mile)		716	
Minority Population		31,050	
% Minority		79%	
Households		12,869	
Housing Units		13,744	
Housing Units Built Before 1950		228	
Per Capita Income		26,531	
Land Area (sq. miles) (Source: SF1)		54.56	
% Land Area		100%	
Water Area (sq. miles) (Source: SF1)		0.25	
% Water Area		0%	

	2012 - 2016 ACS Estimates	Percent	MOE (±)
<b>Population by Race</b>			
Total	39,089	100%	852
Population Reporting One Race	38,104	97%	1,897
White	31,597	81%	847
Black	415	1%	87
American Indian	903	2%	387
Asian	668	2%	222
Pacific Islander	33	0%	25
Some Other Race	4,486	11%	329
Population Reporting Two or More Races	985	3%	188
Total Hispanic Population	29,028	74%	862
Total Non-Hispanic Population	10,061		
White Alone	8,038	21%	312
Black Alone	329	1%	70
American Indian Alone	604	2%	117
Non-Hispanic Asian Alone	637	2%	222
Pacific Islander Alone	18	0%	25
Other Race Alone	51	0%	33
Two or More Races Alone	382	1%	75
<b>Population by Sex</b>			
Male	19,811	51%	402
Female	19,278	49%	580
<b>Population by Age</b>			
Age 0-4	2,373	6%	196
Age 0-17	10,568	27%	414
Age 18+	28,521	73%	423
Age 65+	3,772	10%	175

**Data Note:** Detail may not sum to totals due to rounding. Hispanic population can be of any race.  
 N/A means not available. Source: U.S. Census Bureau, American Community Survey (ACS) 2012 - 2016 .

Location: User-specified linear location

Ring (buffer): 4-mile radius

Description: Santa Fe Brewing Company

	2012 - 2016 ACS Estimates	Percent	MOE (±)
<b>Population 25+ by Educational Attainment</b>			
Total	24,703	100%	413
Less than 9th Grade	2,653	11%	227
9th - 12th Grade, No Diploma	2,855	12%	160
High School Graduate	7,188	29%	289
Some College, No Degree	5,711	23%	196
Associate Degree	1,550	6%	122
Bachelor's Degree or more	6,296	25%	254
<b>Population Age 5+ Years by Ability to Speak English</b>			
Total	36,715	100%	777
Speak only English	18,743	51%	429
Non-English at Home <sup>1+2+3+4</sup>	17,973	49%	507
<sup>1</sup> Speak English "very well"	11,088	30%	376
<sup>2</sup> Speak English "well"	2,236	6%	158
<sup>3</sup> Speak English "not well"	2,455	7%	347
<sup>4</sup> Speak English "not at all"	2,194	6%	263
<sup>3+4</sup> Speak English "less than well"	4,649	13%	355
<sup>2+3+4</sup> Speak English "less than very well"	6,885	19%	374
<b>Linguistically Isolated Households*</b>			
Total	1,061	100%	100
Speak Spanish	1,037	98%	99
Speak Other Indo-European Languages	18	2%	29
Speak Asian-Pacific Island Languages	0	0%	16
Speak Other Languages	5	1%	19
<b>Households by Household Income</b>			
Household Income Base	12,869	100%	162
< \$15,000	1,496	12%	116
\$15,000 - \$25,000	1,398	11%	117
\$25,000 - \$50,000	3,480	27%	166
\$50,000 - \$75,000	2,413	19%	123
\$75,000 +	4,082	32%	184
<b>Occupied Housing Units by Tenure</b>			
Total	12,869	100%	162
Owner Occupied	8,698	68%	160
Renter Occupied	4,171	32%	147
<b>Employed Population Age 16+ Years</b>			
Total	29,783	100%	535
In Labor Force	19,738	66%	477
Civilian Unemployed in Labor Force	1,413	5%	219
Not In Labor Force	10,044	34%	309

**Data Note:** Detail may not sum to totals due to rounding. Hispanic population can be of any race.

N/A means not available. Source: U.S. Census Bureau, American Community Survey (ACS)

\*Households in which no one 14 and over speaks English "very well" or speaks English only.

Location: User-specified linear location

Ring (buffer): 4-mile radius

Description: Santa Fe Brewing Company

	2012 - 2016 ACS Estimates	Percent	MOE (±)
<b>Population by Language Spoken at Home*</b>			
Total (persons age 5 and above)	35,643	100%	748
English	18,744	53%	581
Spanish	15,761	44%	748
French	136	0%	176
French Creole	N/A	N/A	N/A
Italian	N/A	N/A	N/A
Portuguese	N/A	N/A	N/A
German	164	0%	64
Yiddish	N/A	N/A	N/A
Other West Germanic	N/A	N/A	N/A
Scandinavian	N/A	N/A	N/A
Greek	N/A	N/A	N/A
Russian	N/A	N/A	N/A
Polish	N/A	N/A	N/A
Serbo-Croatian	N/A	N/A	N/A
Other Slavic	N/A	N/A	N/A
Armenian	N/A	N/A	N/A
Persian	N/A	N/A	N/A
Gujarathi	N/A	N/A	N/A
Hindi	N/A	N/A	N/A
Urdu	N/A	N/A	N/A
Other Indic	N/A	N/A	N/A
Other Indo-European	354	1%	191
Chinese	49	0%	41
Japanese	N/A	N/A	N/A
Korean	19	0%	31
Mon-Khmer, Cambodian	N/A	N/A	N/A
Hmong	N/A	N/A	N/A
Thai	N/A	N/A	N/A
Laotian	N/A	N/A	N/A
Vietnamese	68	0%	74
Other Asian	139	0%	79
Tagalog	0	0%	16
Other Pacific Island	N/A	N/A	N/A
Navajo	N/A	N/A	N/A
Other Native American	N/A	N/A	N/A
Hungarian	N/A	N/A	N/A
Arabic	0	0%	16
Hebrew	N/A	N/A	N/A
African	N/A	N/A	N/A
Other and non-specified	172	0%	50
Total Non-English	16,899	47%	947

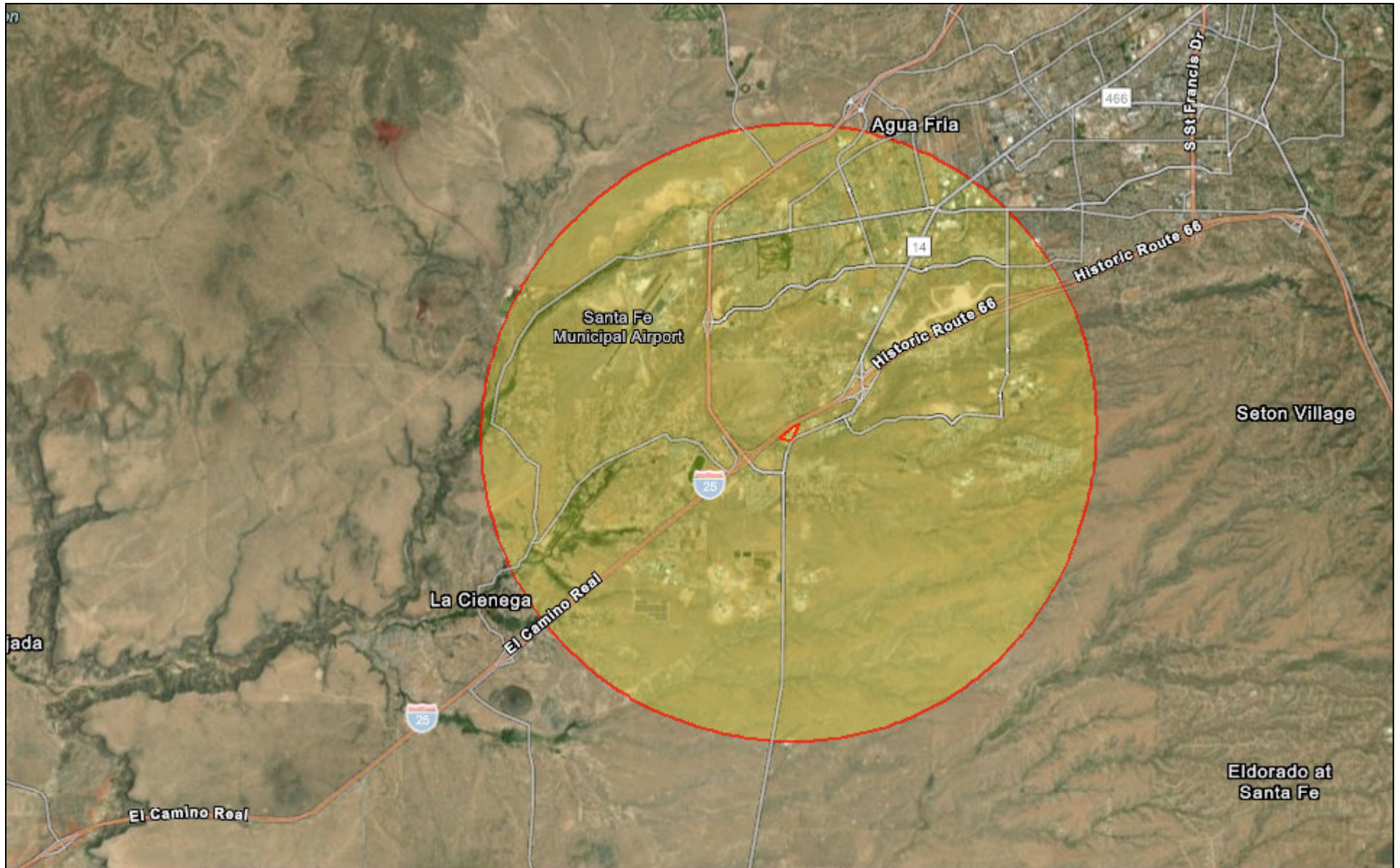
**Data Note:** Detail may not sum to totals due to rounding. Hispanic population can be of any race.

N/A means not available. Source: U.S. Census Bureau, American Community Survey (ACS) 2012 - 2016.

\*Population by Language Spoken at Home is available at the census tract summary level and up.

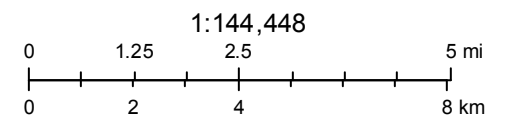


# Santa Fe Brewing Company



June 7, 2019

- Buffer Area
- Digitized Line



Source: Esri, DigitalGlobe, GeoEye, Earthstar Geographics, CNES/Airbus DS, USDA, USGS, AeroGRID, IGN, and the GIS User Community