



**NEW MEXICO ENVIRONMENT DEPARTMENT  
GROUND WATER QUALITY BUREAU**



**PUBLIC INVOLVEMENT PLAN  
(PIP)**

**Facility Name:** Goff Dairy

**Facility Location:** 11015 N. Goff Place  
Sections 16, 17, 20, and 21;  
Township 17 South, Range 37 East

**County:** Lea County

**Responsible Party:** Goff Dairy, LLC  
11015 N Goff Place  
Hobbs, NM 88242

**Agency:** Ground Water Quality Bureau  
Agricultural Compliance Section

**GWQB Action:** Permitting - Renewal and Modification  
DP-1168

**Bureau Contact:** Sarah F. Schnell, Geoscientist  
(505) 222-9520  
Sarah.schnell@state.nm.us

Main bureau telephone number:  
(505) 827-2900

**EFFECTIVE DATE:** June 6, 2019

**REVISION DATE:** N/A

/s/ Nancy McDuffie for

---

**Michelle Hunter**  
Chief, Ground Water Quality Bureau

## Element 1 – Public Involvement Plan (PIP) Overview

The New Mexico Environment Department (NMED or Department), Ground Water Quality Bureau (Bureau) has developed this PIP for the application for renewal and modification of the Ground Water Discharge Permit for Goff Dairy. The permit for this facility is referred to as DP-1168.

The purpose of this PIP is to plan for providing public participation opportunities and information that may be needed for the community to participate in the permitting process for this facility. This PIP identifies information about the community and resources needed by the Bureau to incorporate community participation activities into the decision-making process. This PIP is developed in accordance with the Department's *Public Participation Policy* (Policy 07-13 or Policy), and incorporates the requirements of the Policy, as well as applicable regulatory and statutory public participation requirements.

This PIP implements the “elements” set forth in the Policy. Those elements include:

1. An overview of the Public Involvement Plan for the community affected by the activity
2. Bureau contact names and contact information, specifically for Limited English Proficiency (LEP) language assistance services (e.g., translation, interpreters) or for disability accommodations
3. A summary of the regulatory public participation framework associated with discharge permits
4. A description of community/stakeholder groups based on results of a preliminary environmental justice (EJ) screening
5. Details about planned public outreach activities

In developing this PIP, community participation needs were assessed to ensure appropriate public outreach. This was accomplished by identifying whether there is a combination of environmental and demographic factors that may impact public participation (e.g., low income community, minority community, LEP individuals, linguistically isolated households). Because the community located near the Goff Dairy includes a significant percentage of Spanish speakers, the Bureau will provide appropriate information in both English and Spanish.

Public involvement associated with discharge permits occurs at different stages and in different forms. Public involvement activities required by statute or regulation are mandatory and subject to statutory or regulatory deadlines. Mandatory public involvement activities and associated time requirements relevant to this PIP are noted in the *Table of Mandated Public Involvement Activities* at the end of this PIP.

The Bureau plans to conduct the public involvement activities related to the permitting process outlined in the *Table of Public Involvement Activities* below. The activity timeline and dates are tentative and subject to change.

**Table of Public Involvement Activities**

<b>Activity</b>	<b>Date</b>
<b>Application Notice (PN-1)</b> <i>See Table of Mandated Public Involvement Activities</i> at the end of this PIP for details.	December 2018
<b>Placement of a hardcopy of the PIP in the local NMED office:</b> NMED Hobbs Office 2120 N. Alto Hobbs, NM 88240 (575) 397-6910	June 2019
<b>Notice of availability of draft permit (PN-2)</b> <i>See Table of Mandated Public Involvement Activities.</i>	Within 60 days of determining the application is technically complete. - June 2019

All notices for upcoming meetings or hearings will include a statement that any person who requires assistance, an interpreter, or an auxiliary aid to participate in the process may contact a specifically identified Department person to request those services. Requested interpretation services during the meeting and accommodations or services for persons with disabilities will be arranged to the extent possible.

This PIP is a “living” document that may be amended for numerous reasons, including the consideration of public comments and feedback.

## **Element 2 – Bureau Contact Information**

### **PIP Specific Contacts**

The Bureau contact for this discharge permit is:

Sarah Schnell, Geoscientist  
NMED Ground Water Quality Bureau  
P.O. Box 5469  
Santa Fe, New Mexico 87502-5469  
505-222-9520  
Sarah.schnell@state.nm.us

## **Non-English Language Speaker Assistance**

All public notices will contain a statement that non-English speakers may call the Bureau contact listed above and request language assistance in order to learn more about this permit or the permitting process. Arrangements may be made for document translation or interpretation related to the permitting process as necessary and as resources allow.

## **Individuals with Disabilities Assistance**

All public notices will contain a statement that disabled individuals may call the Bureau contact listed above and request assistance needed to participate in activities associated with the permitting process.

The following information will be provided in public notices so that hearing-impaired callers can contact the Bureau and ask questions about the activity or proceeding: Toll-free numbers are available for TDD or TTY users to access the New Mexico Relay network (for deaf or hearing-impaired callers), 1-800-659-1779; TTY users: 1-800-659-8331.

## **Websites**

Outreach materials and notices will include links to the following website, where the Bureau's public notices and PIP information are posted:

Ground Water Quality Bureau – <https://www.env.nm.gov/gwqb/public-notice/>

## **Element 3 – Regulatory Framework for Public Participation Related to the Permitting Process**

The public participation regulatory framework associated with the permitting process is identified in the *Table of Mandated Public Involvement Activities* at the end of this PIP. The Table identifies activities subject to statutory or regulatory deadlines, the associated regulatory requirements, and the associated dates or time periods.

## **Element 4 – Description of Community/Stakeholder Groups Based on the EJSCREEN**

### **EJSCREEN Summary**

To provide for adequate public participation opportunities and meaningful involvement of persons in the permitting process, the affected communities must first be identified, informed about proposed environmental actions affecting the community, and invited to share their comments and concerns. The EJSCREEN tool developed by the U.S. Environmental Protection Agency (EPA) helps identify communities that are low income, have minority populations, and have limited English proficiency that may benefit from a variety of approaches for notification and outreach communication. This information is used to help plan for the community's involvement in the public process for environmental activities or actions. In addition to the EJSCREEN results, the

Bureau may consider additional information such as the U.S. Census Bureau website or NMED's EJ Mapping Tool.

The Bureau considers the affected community to be those persons living within the geographic area depicted on the attached EJSCREEN document that includes the discharge site. The results of the EJSCREEN American Community Survey (ACS) Summary Report (attached to this PIP) are summarized in the table below.

### **EJSCREEN Results for the Affected Community**

Total population	6,100
Total number of households	1,443
Percentage minority population	45%
Percentage Hispanic population	37%
Percentage of the population by race	Population reporting one race: White: ..... 89% Black: ..... 3.7% American Indian: ..... 2.0% Asian: ..... 0.1% Pacific Islander: ..... 0.2% Some Other Race: ..... 2.8%
Total number of persons greater than the age of five who speak English "less than very well"	247
Percentage of persons greater than the age of five who speak English "less than very well"	4.3%
Total number of linguistically isolated households	32
Percentage of linguistically isolated households (Total number of linguistically isolated households ÷ total number of households X 100)	2.2%
Languages by percentage in linguistically isolated households	Spanish: ..... 93% Asian-Pacific Island languages: ..... 7%
Percent linguistically isolated population, New Mexico*:	5.1%
Per capita income	\$22,801
Per capita income, USA**	\$31,128

\* U.S. Census Bureau. 2012-2016 American Community Survey 5-Year Estimates, Table S1602. Limited English Speaking Households. [https://factfinder.census.gov/bkmk/table/1.0/en/ACS/16\\_5YR/S1602/0100000US/0400000US35](https://factfinder.census.gov/bkmk/table/1.0/en/ACS/16_5YR/S1602/0100000US/0400000US35) (date of access: 3/22/2019).

\*\* U.S. Census Bureau. 2016 American Community Survey 1-Year Estimates, Table S0201. Selected Population Profile in the United States. [https://factfinder.census.gov/bkmk/table/1.0/en/ACS/16\\_1YR/S0201/0100000US](https://factfinder.census.gov/bkmk/table/1.0/en/ACS/16_1YR/S0201/0100000US) (date of access: 3/22/2019).

The EJSCREEN results indicate that for the affected community the proportion of the population with limited English proficiency (LEP) is significant. The Bureau has therefore performed a LEP assessment for the community and attaches that assessment to this PIP.

Because the affected community has a significant percentage of persons with difficulties communicating in English, the Bureau will consider the language and communication needs of this community when conducting public outreach and participation activities. To accomplish this the Bureau will provide the same information in Spanish as in English in public comment notices, public meeting notices, and other announcements (e.g., radio broadcasts, brochures, signs, postcards) and will strive to make public participation efforts as inclusive as possible within the Bureau's budget and time limitations. See Element 5 for more specifics on the public outreach and participation activities.

## **Element 5 – Detailed Actions and Outreach Activities with the Affected Public**

Public involvement activities required by statute or regulation for this permitting action are listed in the *Table of Mandated Public Involvement Activities* at the end of this document.

### **Public Participation – Outreach Activities**

The Bureau will conduct the following outreach activities during this permitting process:

- Placement of this PIP on the Bureau website and in nearby NMED field office
- Postal mailing and email notices
- Newspaper notices
- Notice posted on NMED website

Newspapers utilized in the notification process include:

- Statewide circulation (English): Albuquerque Journal
- Local circulation (English and Spanish):
- Hobbs Sun-News - Lea County

Local, state, and federal government agencies, tribal entities, and land grant officials will be notified about the permitting process. A list of the agencies and officials notified can be provided upon request.

Indian Tribes, Pueblos and Nations will be notified about the permitting action through the contacts maintained by the Indian Affairs Department at the following URLs:

<http://www.iad.state.nm.us/apaches.html>

<http://www.iad.state.nm.us/navajo.html>

<http://www.iad.state.nm.us/pueblos.html>

Timelines and methods for submitting public comments are specified in the *Table of Mandated Public Involvement Activities*. Final discharge permit documents will be available from the Bureau's contact identified in Element 2 of this PIP.

### **Postal Mailing or E-Mailing of Notices to Persons on the Facility-Specific Mailing List**

The Bureau solicits the names and contact information of interested parties with all public notices. The Bureau maintains those names on a Facility-Specific Mailing List and provides the individuals with information about regulatory activities for the facility. Individuals, organizations, and other interested parties are added to the mailing list as requested. All public notices will contain a statement directing interested individuals to contact the Bureau contact for this permit if they want to be added to the facility specific mailing list.

Other means of outreach such as fliers announcing public comment periods and/or public meetings or hearings may be posted in locations throughout the community (e.g., local businesses, schools, libraries) and on the Department's website, at the Bureau's discretion after consideration of public interest and input.

### **Attachments**

- LEP Assessment
- A copy of the EJSCREEN ACS Summary Report, and a map showing the area evaluated.

**Table of Mandated Public Involvement Activities**

Activity	Dates
<p>Application Notice (PN-1): The first notice of the Bureau's receipt of the permit application – applicant's obligations at 20.6.2.3108.B – Bureau's obligations at 20.6.2.3108.E NMAC</p> <ul style="list-style-type: none"> <li>• Newspaper ads (PN-1 synopsis<sup>1</sup> in English and Spanish) - Applicant obligation</li> <li>• NMED website <a href="https://www.env.nm.gov/gwqb/public-notice/">https://www.env.nm.gov/gwqb/public-notice/</a></li> <li>• Notice to government agencies</li> <li>• Notice to interested parties</li> </ul>	<p>Within 30 days of the department deeming the application administratively complete</p>
<p>Permit Notice (PN-2): Notice to the public of the availability of a draft permit for a 30-day review and comment period – the notice will outline the process for requesting a public hearing – obligation at 20.6.2.3108.H through J NMAC</p> <ul style="list-style-type: none"> <li>• NMED website <a href="https://www.env.nm.gov/gwqb/public-notice/">https://www.env.nm.gov/gwqb/public-notice/</a></li> <li>• Newspaper ads</li> <li>• Notification of interested parties</li> <li>• Notice to government agencies</li> <li>• Notice to Indian Tribes, Pueblos and Nations</li> </ul>	<p>Within 60 days of the department determining the application is technically complete and drafting a permit.</p>
<p>Public Hearing Notice (if required): Upon the Department's determination that there is substantial public interest in the permit – obligation at 20.6.2.3108.L NMAC. Notice includes information on how to participate in the hearing, and how to request an interpreter or auxiliary aid if needed.</p> <ul style="list-style-type: none"> <li>• NMED website <a href="https://www.env.nm.gov/gwqb/public-notice/">https://www.env.nm.gov/gwqb/public-notice/</a></li> <li>• Newspapers</li> <li>• Notice to interested parties</li> <li>• Notice to government agencies</li> <li>• Notice to Indian Tribes, Pueblos and Nations</li> </ul>	<p>Notice of the hearing shall occur at least 30 days prior to the hearing.</p>

---

<sup>1</sup> Suitable for display, the abbreviated format of the PN-1 synopsis does not contain all the information provided by a full public notice, e.g, language assistance or non-discrimination information.



## **Limited English Proficiency (LEP) Assessment**

**Facility:** Goff Dairy, DP-1168

### **Factor 1: The Number and Proportion of LEP Individuals Eligible to be Served or Likely to be Encountered in Community of Concern**

See Public Involvement Plan (PIP), Table of EJSCREEN Results for the Affected Community.

#### Conclusions:

1. The number of LEP individuals (persons over the age of 5 who speak English “less than very well” in the affected community) is 247.
2. The percentage of LEP individuals in the affected community is 4.3%.
3. The percentage of linguistically isolated households is 2.2%, which is less than the statewide average.
4. Spanish is the predominant non-English language spoken by LEP persons.
5. Historical participation: One person has requested to be placed on a facility-specific mailing list. A review of the administrative record for this facility indicates limited public interest/participation overall during the past 10 years.

### **Factor 2: Frequency with which LEP Individuals Might Come in Contact with the Program**

Contact with the discharge permitting process primarily occurs when a permit application is under review. The GWQB provides notice to the public and encourages participation. Individuals may participate by requesting information, submitting comments on draft permits, requesting hearings, and taking part in hearings. Some permits generate considerable public interest, but participation is low for most permits. Historical participation in permitting activities for this facility is summarized under Factor 1.

#### Conclusion:

LEP participation and overall public interest in this facility have been limited historically. Based on this record, the Bureau considers the potential for LEP contact with the permitting process to be “infrequent.”

### **Factor 3: Nature and Importance of the Activity or Service Provided by the Program**

The permitting activity is deemed by the GWQB to be “important” to NMED, the impacted community, and the State of New Mexico. The permitting activity is important to NMED because the permit establishes site-specific requirements that must be met to ensure protection of public health and groundwater quality and provides a means to enforce those requirements. The permitting activity is important to the impacted community because poorly-operated waste treatment facilities have the potential to pose a public nuisance and adversely affect the quality of life of people living in the vicinity of the facility. The permitting activity is important to the State of New Mexico because establishment of effective permits ensures that discharges will not impact the State's limited

groundwater resources and that waste disposal is conducted in a consistent manner throughout the State.

Conclusion:

The GWQB considers the permitting activity “important” to NMED, to the state as a whole, and to the impacted community.

**Factor 4: Resources Available to NMED for LEP Services and Associated Costs**

For outreach to LEP communities associated with this permit action, NMED employs an in-house Spanish translator/interpreter and utilizes a phone interpretation service to assist during direct communication between LEP individuals and NMED staff. The costs of newspaper publication of public notice in Spanish, and of interpretive services for a public meeting or hearing are being incorporated into the Bureau’s budget, to the extent possible. Fees collected from the permittee in accordance with the schedule at 20.6.2.3114 NMAC are not sufficient to cover these costs.

Conclusion:

The Bureau can accommodate the costs of the LEP services identified in this plan. If additional services are requested, the budgetary implications will be reviewed.

**LEP Services Plan:**

The Bureau plans to:

1. Translate the Public Notice Two (PN-2) and any subsequent public notices into Spanish and publish in a paper serving the local community.
2. Provide interpretive services at any public meeting or public hearing, if requested.
3. Interact with members of the LEP community using certified interpreters, when needed.

The Bureau will consider requests from members of the affected community for additional LEP services.

Location: User-specified polygonal location  
Ring (buffer): 4-mile radius  
Description: North Hobbs 2012-2016 data

Summary of ACS Estimates		2012 - 2016
Population		6,100
Population Density (per sq. mile)		40
Minority Population		2,743
% Minority		45%
Households		1,443
Housing Units		1,588
Housing Units Built Before 1950		77
Per Capita Income		29,860
Land Area (sq. miles) (Source: SF1)		153.35
% Land Area		100%
Water Area (sq. miles) (Source: SF1)		0.21
% Water Area		0%

	2012 - 2016 ACS Estimates	Percent	MOE (±)
<b>Population by Race</b>			
Total	6,100	100%	402
Population Reporting One Race	5,953	98%	784
White	5,424	89%	382
Black	225	4%	130
American Indian	121	2%	47
Asian	6	0%	38
Pacific Islander	8	0%	16
Some Other Race	169	3%	171
Population Reporting Two or More Races	146	2%	107
Total Hispanic Population	2,270	37%	351
Total Non-Hispanic Population	3,829		
White Alone	3,357	55%	231
Black Alone	225	4%	130
American Indian Alone	113	2%	47
Non-Hispanic Asian Alone	6	0%	38
Pacific Islander Alone	0	0%	11
Other Race Alone	0	0%	20
Two or More Races Alone	128	2%	107
<b>Population by Sex</b>			
Male	3,598	59%	266
Female	2,502	41%	242
<b>Population by Age</b>			
Age 0-4	336	6%	122
Age 0-17	1,415	23%	182
Age 18+	4,685	77%	284
Age 65+	509	8%	90

**Data Note:** Detail may not sum to totals due to rounding. Hispanic population can be of any race.

N/A means not available. Source: U.S. Census Bureau, American Community Survey (ACS) 2012 - 2016 .

Location: User-specified polygonal location

Ring (buffer): 4-mile radius

Description: North Hobbs 2012-2016 data

	2012 - 2016 ACS Estimates	Percent	MOE (±)
<b>Population 25+ by Educational Attainment</b>			
Total	3,902	100%	240
Less than 9th Grade	269	7%	84
9th - 12th Grade, No Diploma	581	15%	91
High School Graduate	1,276	33%	129
Some College, No Degree	1,126	29%	140
Associate Degree	291	7%	80
Bachelor's Degree or more	650	17%	132
<b>Population Age 5+ Years by Ability to Speak English</b>			
Total	5,764	100%	377
Speak only English	3,981	69%	244
Non-English at Home <sup>1+2+3+4</sup>	1,783	31%	280
<sup>1</sup> Speak English "very well"	1,536	27%	196
<sup>2</sup> Speak English "well"	130	2%	120
<sup>3</sup> Speak English "not well"	86	1%	81
<sup>4</sup> Speak English "not at all"	31	1%	25
<sup>3+4</sup> Speak English "less than well"	117	2%	81
<sup>2+3+4</sup> Speak English "less than very well"	247	4%	144
<b>Linguistically Isolated Households*</b>			
Total	32	100%	47
Speak Spanish	30	93%	43
Speak Other Indo-European Languages	0	0%	11
Speak Asian-Pacific Island Languages	2	7%	16
Speak Other Languages	0	0%	11
<b>Households by Household Income</b>			
Household Income Base	1,443	100%	105
< \$15,000	99	7%	38
\$15,000 - \$25,000	84	6%	57
\$25,000 - \$50,000	183	13%	84
\$50,000 - \$75,000	302	21%	103
\$75,000 +	776	54%	119
<b>Occupied Housing Units by Tenure</b>			
Total	1,443	100%	105
Owner Occupied	1,211	84%	93
Renter Occupied	233	16%	89
<b>Employed Population Age 16+ Years</b>			
Total	4,856	100%	286
In Labor Force	2,500	51%	198
Civilian Unemployed in Labor Force	164	3%	132
Not In Labor Force	2,355	49%	184

**Data Note:** Detail may not sum to totals due to rounding. Hispanic population can be of any race.

N/A means not available. Source: U.S. Census Bureau, American Community Survey (ACS)

\*Households in which no one 14 and over speaks English "very well" or speaks English only.

Location: User-specified polygonal location

Ring (buffer): 4-mile radius

Description: North Hobbs 2012-2016 data

	2012 - 2016 ACS Estimates	Percent	MOE (±)
<b>Population by Language Spoken at Home*</b>			
Total (persons age 5 and above)	5,633	100%	305
English	3,930	70%	282
Spanish	1,569	28%	226
French	17	0%	17
French Creole	N/A	N/A	N/A
Italian	N/A	N/A	N/A
Portuguese	N/A	N/A	N/A
German	28	0%	27
Yiddish	N/A	N/A	N/A
Other West Germanic	N/A	N/A	N/A
Scandinavian	N/A	N/A	N/A
Greek	N/A	N/A	N/A
Russian	N/A	N/A	N/A
Polish	N/A	N/A	N/A
Serbo-Croatian	N/A	N/A	N/A
Other Slavic	N/A	N/A	N/A
Armenian	N/A	N/A	N/A
Persian	N/A	N/A	N/A
Gujarathi	N/A	N/A	N/A
Hindi	N/A	N/A	N/A
Urdu	N/A	N/A	N/A
Other Indic	N/A	N/A	N/A
Other Indo-European	16	0%	17
Chinese	7	0%	17
Japanese	N/A	N/A	N/A
Korean	0	0%	11
Mon-Khmer, Cambodian	N/A	N/A	N/A
Hmong	N/A	N/A	N/A
Thai	N/A	N/A	N/A
Laotian	N/A	N/A	N/A
Vietnamese	0	0%	11
Other Asian	6	0%	16
Tagalog	0	0%	11
Other Pacific Island	N/A	N/A	N/A
Navajo	N/A	N/A	N/A
Other Native American	N/A	N/A	N/A
Hungarian	N/A	N/A	N/A
Arabic	1	0%	11
Hebrew	N/A	N/A	N/A
African	N/A	N/A	N/A
Other and non-specified	58	1%	28
Total Non-English	1,702	30%	369

**Data Note:** Detail may not sum to totals due to rounding. Hispanic population can be of any race.

N/A means not available. Source: U.S. Census Bureau, American Community Survey (ACS) 2012 - 2016.

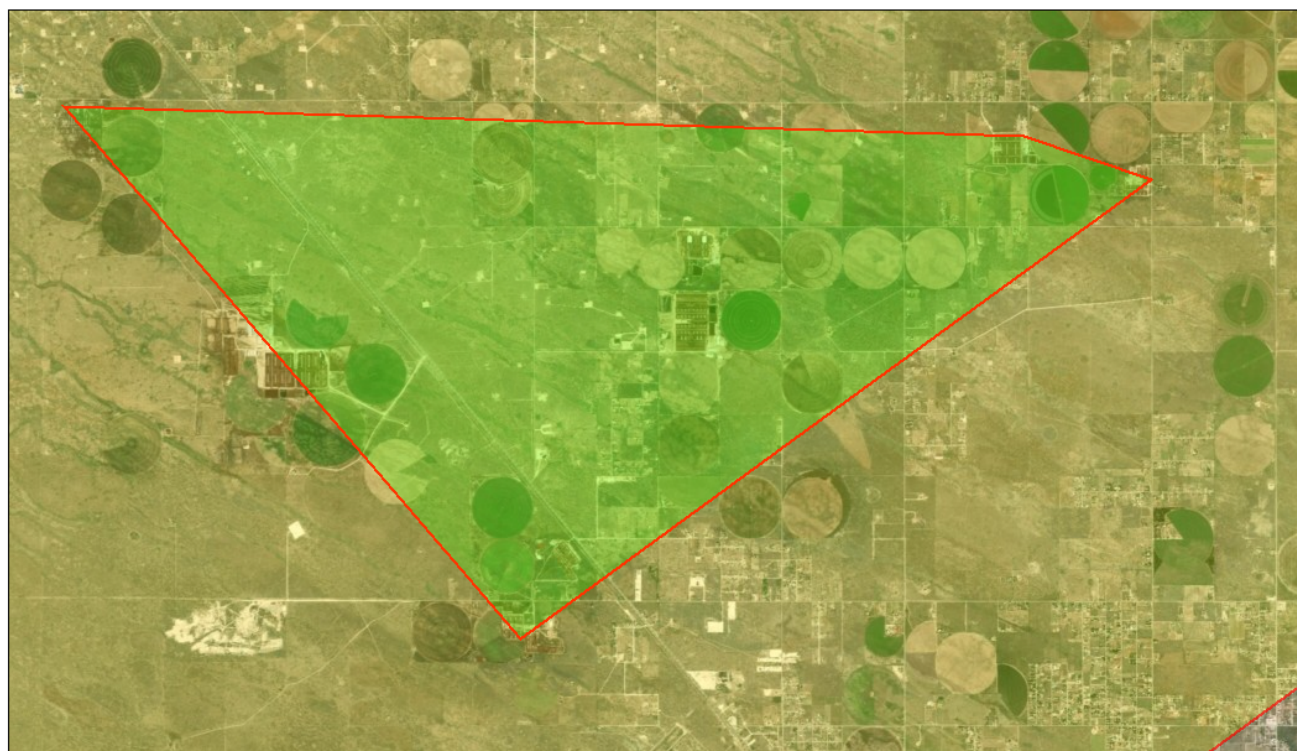
\*Population by Language Spoken at Home is available at the census tract summary level and up.

4 mile Ring around the Area, NEW MEXICO, EPA Region 6

Approximate Population: 6,100

Input Area (sq. miles): 152.23

North Hobbs 2012-2016 data



April 2, 2019

Buffer Area

Digitized Polygon

1:72,224  
0 0.5 1 2 mi  
0 1 2 4 km  
Esri, HERE, Garmin, © OpenStreetMap contributors, and the GIS user community  
Source: Esri, DigitalGlobe, GeoEye, Earthstar Geographics, CNES/Airbus DS, USDA, USGS, AeroGRID, IGN, and the GIS User Community

#### Sites reporting to EPA

Superfund NPL	0
Hazardous Waste Treatment, Storage, and Disposal Facilities (TSDF)	2