



**NEW MEXICO ENVIRONMENT DEPARTMENT**  
GROUND WATER QUALITY BUREAU  
PUBLIC INVOLVEMENT PLAN  
(PIP)



**Facility Name:** Continental Mine

**Facility Location:** 303 Fierro Road  
Hanover, NM 88041  
Sections 3, 4, 5, 8, 9, 10, 15, 16, 20, 21, 29, 31, and 32  
T17S, R12W

**County:** Grant

**Responsible Party:** Freeport-McMoRan Chino Mines Company  
P.O. Box 10  
Bayard, NM 88023

**Agency:** Ground Water Quality Bureau  
Mining Environmental Compliance Section

**GWQB Action:** Permitting - Renewal/Modification  
DP-181

**Bureau Contact:** Anne Maurer, Mining Act Team Leader  
(505) 660-8878  
[anne.maurer@env.nm.gov](mailto:anne.maurer@env.nm.gov)  
or [mecs.general@state.nm.us](mailto:mecs.general@state.nm.us)

Main bureau telephone number:  
(505) 827-2900

**EFFECTIVE DATE:** October 7, 2022

**REVISION DATE:** October 7, 2022

**Joseph Fox** Digitally signed by Joseph Fox  
Date: 2022.10.07 11:49:00  
-06'00', for

**Justin D. Ball, Chief**  
**Ground Water Quality Bureau**

## Element 1 – Public Involvement Plan (PIP) Overview

The New Mexico Environment Department (NMED or Department), Ground Water Quality Bureau (Bureau) has developed this PIP for the renewal and modification application of the Ground Water Discharge Permit for the Continental Mine. The permit for this facility is referred to as DP-181.

The purpose of this PIP is to plan for providing public participation opportunities and information that may be needed for the community to participate in the permitting process for this facility. This PIP identifies information about the community and resources needed by the Bureau to incorporate community participation activities into the decision-making process. This PIP is developed in accordance with the Department's *Public Participation Policy* (Policy 07-13 or Policy), and incorporates the requirements of the Policy, as well as applicable regulatory and statutory public participation requirements.

This PIP implements the “elements” set forth in the Policy. Those elements include:

1. An overview of the Public Involvement Plan for the community affected by the activity
2. Bureau contact names and contact information, specifically for Limited English Proficiency (LEP) language assistance services (e.g., translation, interpreters) or for disability accommodations
3. A summary of the regulatory public participation framework associated with discharge permits
4. A description of community/stakeholder groups based on results of a preliminary environmental justice (EJ) screening
5. Details about planned public outreach activities

In developing this PIP, community participation needs were assessed to ensure appropriate public outreach. This was accomplished by identifying whether there is a combination of environmental and demographic factors that may impact public participation (e.g., low income community, minority community, LEP individuals, linguistically isolated households). Because the community located near the Continental Mine includes a significant percentage of Spanish speakers, the Bureau will provide appropriate information in both English and Spanish.

Public involvement associated with discharge permits occurs at different stages and in different forms. Public involvement activities required by statute or regulation are mandatory and subject to statutory or regulatory deadlines. Mandatory public involvement activities and associated time requirements relevant to this PIP are noted in the *Table of Mandated Public Involvement Activities* at the end of this PIP.

The Bureau plans to conduct the public involvement activities related to the permitting process outlined in the *Table of Public Involvement Activities* below. The activity timeline and dates are tentative and subject to change.

**Table of Public Involvement Activities**

<b>Activity</b>	<b>Date</b>
<b>Application Notice (PN-1)</b> <i>See Table of Mandated Public Involvement Activities at the end of this PIP for details.</i>	October 2022
<b>Placement of a hardcopy of the PIP in the local NMED office:</b> Silver City Field Office 3082 32 <sup>nd</sup> Street By-Pass Road, Suite D Silver City, NM 88061 (575) 388-1934	October 2022
<b>Notice of availability of draft permit (PN-2)</b> <i>See Table of Mandated Public Involvement Activities.</i>	Within 60 days of determining the application is technically complete.

All notices for upcoming meetings or hearings will include a statement that any person who requires assistance, an interpreter, or an auxiliary aid to participate in the process may contact a specifically identified Department person to request those services. Requested interpretation services during the meeting and accommodations or services for persons with disabilities will be arranged to the extent possible.

This PIP is a “living” document that may be amended for numerous reasons, including the consideration of public comments and feedback.

## **Element 2 – Bureau Contact Information**

### **PIP Specific Contacts**

The Bureau contact for this discharge permit is:

Anne Maurer, Mining Act Team Leader  
NMED Ground Water Quality Bureau  
P.O. Box 5469, Santa Fe, NM 87502-5469  
(505) 660-8878 / [anne.maurer@env.nm.gov](mailto:anne.maurer@env.nm.gov) / [mecs.general@env.nm.gov](mailto:mecs.general@env.nm.gov)

## **Non-English Language Speaker Assistance**

All public notices will contain a statement that non-English speakers may call the Bureau contact listed above and request language assistance in order to learn more about this permit or the permitting process. Arrangements may be made for document translation or interpretation related to the permitting process as necessary and as resources allow.

## **Individuals with Disabilities Assistance**

All public notices will contain a statement that individuals with disabilities may call the Bureau contact listed above and request assistance needed to participate in activities associated with the permitting process.

The following information will be provided in public notices so that individuals who are deaf, hard of hearing, or have difficulty speaking on the phone can contact the Bureau and ask questions about the activity or proceeding: Telephone conversation assistance is available through Relay New Mexico at no charge for people who are deaf, hard of hearing, or have difficulty speaking on the phone, by calling 1-800-659-1779 (English); 1-800-327-1857 (Spanish); TTY users: 1-800-659-8331.

## **Websites**

Outreach materials and notices will include links to the following website, where the Bureau's public notices and PIP information are posted:

Ground Water Quality Bureau – <https://www.env.nm.gov/public-notices/>

## **Element 3 – Regulatory Framework for Public Participation Related to the Permitting Process**

The public participation regulatory framework associated with the permitting process is identified in the *Table of Mandated Public Involvement Activities* at the end of this PIP. The Table identifies activities subject to statutory or regulatory deadlines, the associated regulatory requirements, and the associated dates or time periods.

## **Element 4 – Description of Community/Stakeholder Groups Based on the EJSCREEN**

### **EJSCREEN Summary**

To provide for adequate public participation opportunities and meaningful involvement of persons in the permitting process, the affected communities must first be identified, informed about proposed environmental actions affecting the community, and invited to share their comments and concerns. The EJSCREEN tool developed by the U.S. Environmental Protection

Agency (EPA) helps identify communities that are low income, have minority populations, and have limited English proficiency that may benefit from a variety of approaches for notification and outreach communication. This information is used to help plan for the community's involvement in the public process for environmental activities or actions. In addition to the EJSCREEN results, the Bureau may consider additional information such as the U.S. Census Bureau website or NMED's EJ Mapping Tool.

The Bureau considers the affected community to be those persons living within the geographic area depicted on the **attached EJSCREEN** document that includes Silver City, Bayard, Hurley, Tyrone, Hanover, and Mimbres, which are in proximity to the discharge site. The results of the EJSCREEN American Community Survey (ACS) Summary Report (**attached to this PIP**) are summarized in the table below.

**EJSCREEN Results for the Affected Community**

Total population	24,119
Total number of households	10,101
Percentage minority population	58%
Percentage Hispanic population	53%
Percentage of the population by race	Population reporting one race: White: ..... 92% Black: ..... 1% American Indian: ..... 2% Asian: ..... 1% Pacific Islander: ..... 0% Some Other Race: ..... 2%
Total number of persons greater than the age of five who speak English "less than very well"	655
Percentage of persons greater than the age of five who speak English "less than very well"	3%
Total number of linguistically isolated households	119
Percentage of linguistically isolated households (Total number of linguistically isolated households ÷ total number of households) X 100	1.18%
Languages by percentage in linguistically isolated households	Spanish: .....100% Other Indo-European languages:0% Asian-Pacific Island languages: ..... 0% Other languages: ..... 0%
Percent linguistically isolated population, New Mexico*:	5.4%

Per capita income	\$24,465
Per capita income, USA**	\$35,384

\* U.S. Census Bureau. 2020 American Community Survey 5-Year Estimates, Table S1602. Limited English-Speaking Households.

<https://data.census.gov/cedsci/table?q=S1602%3A%20LIMITED%20ENGLISH%20SPEAKING%20HOUSEHOLDS&g=0400000US35&tid=ACSST5Y2020.S1602> (date of access: 5/4/2022).

\*\* U.S. Census Bureau. 2020 American Community Survey 5-Year Estimates, Table B19301. Per Capita Income in the Past 12 Months (In 2020 Inflation-Adjusted Dollars).

<https://data.census.gov/cedsci/table?q=per%20capita%20income&tid=ACSDT5Y2020.B19301>. (Date of access: 5/4/2022).

Based on the EJSCREEN results regarding language proficiencies, the Bureau plans to conduct public outreach in accordance with the *Table of Mandated Public Involvement Activities* at the end of this PIP.

## Element 5 – Detailed Actions and Outreach Activities with the Affected Public

Public involvement activities required by statute or regulation for this permitting action are listed in the *Table of Mandated Public Involvement Activities* at the end of this document.

### Public Participation – Outreach Activities

The Bureau will conduct the following outreach activities during this permitting process:

- Placement of this PIP on the Bureau website and in nearby NMED field office
- Postal mailing and email notices
- Newspaper notices
- Notice posted on NMED website

Newspapers to be utilized in the notification process include:

- Statewide circulation (English): Albuquerque Journal
- Local circulation (English and Spanish): Silver City Press – Grant County

Local, state, and federal government agencies, tribal entities, land grant officials and colonias will be notified about the permitting process. A list of the agencies and officials notified can be provided upon request.

Indian Tribes, Pueblos and Nations will be notified about the permitting action through the contacts maintained by the Indian Affairs Department at the following URLs:

<https://www.iad.state.nm.us/pueblo-tribes-and-nations/pueblos/>  
<https://www.iad.state.nm.us/pueblo-tribes-and-nations/navajo/>  
<https://www.iad.state.nm.us/pueblo-tribes-and-nations/apaches/>

Timelines and methods for submitting public comments are specified in the *Table of Mandated Public Involvement Activities*. Final discharge permit documents will be available from the Bureau's contact identified in Element 2 of this PIP.

### **Postal Mailing or E-Mailing of Notices to Persons on the Facility-Specific Mailing List**

The Bureau solicits the names and contact information of interested parties with all public notices. The Bureau maintains those names on a Facility-Specific Mailing List and provides the individuals with information about regulatory activities for the facility. Individuals, organizations, and other interested parties are added to the mailing list as requested. All public notices will contain a statement directing interested individuals to contact the Bureau contact for this permit if they want to be added to the facility specific mailing list.

Other means of outreach such as fliers announcing public comment periods and/or public meetings or hearings may be posted in locations throughout the community (e.g., local businesses, schools, libraries) and on the Department's website, at the Bureau's discretion after consideration of public interest and input.

### **PIP Contingency Plan**

During a public health emergency or other unforeseen event outside the control of the Department, the Department will make every effort to ensure the public remains involved in and informed of the decision making and permit processes. The purpose of this PIP Contingency Plan is in part to address circumstances when public spaces are closed because of potential human exposure risks. The Department will attempt to identify and utilize alternate methods of document delivery to the public and public viewing when conventional methods and locations are unavailable. When it is unsafe to utilize the physical PIP and document repositories, the Department will consider utilizing electronic delivery methods deemed appropriate for the permitting action. While operating under the PIP Contingency Plan, the PN-2 will include a statement specifying that the PIP Contingency Plan is in effect and that, "instead of placing a copy of the PIP for this permitting action in a public location, NMED will make the PIP available to the community by sending the PIP by email or US mail to any community member requesting a copy. An individual may request a copy of the PIP utilizing the Bureau contact information in this public notice. When making such a request, please specify how you would like the document delivered. If you request a copy of a PIP, you will receive a revised PIP should the PIP be updated in the future." During the times of potential human exposure risks and the resultant implementation of this PIP Contingency Plan, public meetings and hearings will only be held when or through means by which the Department can ensure the public's health and safety and this PIP can be fully adhered to.

### **Attachments**

- A copy of the EJSCREEN ACS Summary Report, and a map showing the area evaluated.

**Table of Mandated Public Involvement Activities**

Activity	Dates
<p>Application Notice (PN-1): The first notice of the Bureau's receipt of the permit application – applicant's obligations at 20.6.2.3108.B and C NMAC – Bureau's obligations at 20.6.2.3108.E NMAC</p> <ul style="list-style-type: none"> <li>• Signs (PN-1 synopsis<sup>1</sup> in English and Spanish) - Applicant obligation</li> <li>• Mailings to owners of nearby properties - Applicant obligation</li> <li>• Newspaper display ads (PN-1 synopsis<sup>2</sup> in English and Spanish)- Applicant obligation</li> <li>• NMED website <a href="https://www.env.nm.gov/public-notices/">https://www.env.nm.gov/public-notices/</a></li> <li>• Notice to government agencies</li> <li>• Notice to interested parties</li> </ul>	<p>Within 30 days of the department deeming the application administratively complete</p>
<p>Permit Notice (PN-2): Notice to the public of the availability of a draft permit for a 30-day review and comment period – the notice will outline the process for requesting a public hearing – obligation at 20.6.2.3108.H through J NMAC</p> <ul style="list-style-type: none"> <li>• NMED website <a href="https://www.env.nm.gov/public-notices/">https://www.env.nm.gov/public-notices/</a></li> <li>• Newspaper legal ads</li> <li>• Notification of interested parties</li> <li>• Notice to government agencies</li> <li>• Notice to Indian Tribes, Pueblos and Nations</li> </ul>	<p>Within 60 days of the department determining the application is technically complete and drafting a permit.</p>
<p>Fact Sheet (for federal facilities, except those with only domestic waste discharges): To include general information regarding the permittee, the facility, the discharge, procedures to be followed in making a final permit determination, the comment period, procedures for a person to request a hearing, contact information to obtain a copy of the draft permit and fact sheet, and a brief summary of the basis of draft permit conditions – obligation at 20.6.2.3108.I NMAC<sup>3</sup></p>	<p>With the PN-2</p>
<p>Public Hearing Notice (if required): Upon the Department's determination that there is substantial public interest in the permit – obligation at 20.6.2.3108.M NMAC. Notice includes</p>	<p>Notice of the hearing shall occur at least 30 days prior to the hearing.</p>

<sup>1</sup> Suitable for display, the abbreviated format of the PN-1 synopsis does not contain all the information provided by a full public notice, e.g., language assistance or non-discrimination information.

<sup>2</sup> Suitable for display, the abbreviated format of the PN-1 synopsis does not contain all the information provided by a full public notice, e.g., language assistance or non-discrimination information.

<sup>3</sup> NMED considers the cited regulation to more appropriately reference the information in 20.6.2.3108.K instead distribution methods of 20.6.2.3108.J NMAC.



<p>information on how to participate in the hearing, and how to request an interpreter or auxiliary aid if needed.</p> <ul style="list-style-type: none"> <li>• NMED website <a href="https://www.env.nm.gov/public-notices/">https://www.env.nm.gov/public-notices/</a></li> <li>• Newspapers</li> <li>• Notice to interested parties</li> <li>• Notice to government agencies</li> <li>• Notice to Indian Tribes, Pueblos and Nations</li> </ul>	
<p>Response to Comments (if comments received): Upon the Secretary's decision regarding issuance of a discharge permit – obligation at 20.6.2.3109.B NMAC. The Response to Comments shall specify which provisions, if any, in the draft permit were changed and the reasons for the change, and shall briefly describe and respond to all significant comments on the draft permit raised during the public comment period or at any hearing. The Secretary shall notify persons who participated in the permitting action by mail or email of the action taken and the reasons for such action and shall include a copy of the Response to Comments.</p>	<p>Response is issued 30 days after the administrative record is complete and all required information is available</p>

Location: User-specified polygonal location  
 Ring (buffer): 0-miles radius  
 Description: Continental Mine PIP/LEP Area

Summary of ACS Estimates		2015 - 2019	
Population		24,119	
Population Density (per sq. mile)		110	
People of Color Population		13,877	
% People of Color Population		58%	
Households		10,101	
Housing Units		12,551	
Housing Units Built Before 1950		2,021	
Per Capita Income		24,465	
Land Area (sq. miles) (Source: SF1)		218.70	
% Land Area		100%	
Water Area (sq. miles) (Source: SF1)		0.34	
% Water Area		0%	
	2015 - 2019 ACS Estimates	Percent	MOE (±)
Population by Race			
Total	24,119	100%	520
Population Reporting One Race	23,746	98%	1,318
White	22,202	92%	534
Black	275	1%	128
American Indian	567	2%	238
Asian	167	1%	105
Pacific Islander	3	0%	12
Some Other Race	533	2%	301
Population Reporting Two or More Races	373	2%	117
Total Hispanic Population	12,902	53%	534
Total Non-Hispanic Population	11,217		
White Alone	10,242	42%	359
Black Alone	242	1%	128
American Indian Alone	492	2%	235
Non-Hispanic Asian Alone	131	1%	105
Pacific Islander Alone	3	0%	12
Other Race Alone	15	0%	23
Two or More Races Alone	92	0%	90
Population by Sex			
Male	11,856	49%	331
Female	12,262	51%	316
Population by Age			
Age 0-4	1,331	6%	172
Age 0-17	4,972	21%	287
Age 18+	19,147	79%	386
Age 65+	6,119	25%	204

**Data Note:** Detail may not sum to totals due to rounding. Hispanic population can be of any race.

N/A means not available. **Source:** U.S. Census Bureau, American Community Survey (ACS) 2015 - 2019

Location: User-specified polygonal location

Ring (buffer): 0-miles radius

Description: Continental Mine PIP/LEP Area

	2015 - 2019 ACS Estimates	Percent	MOE (±)
<b>Population 25+ by Educational Attainment</b>			
Total	17,100	100%	343
Less than 9th Grade	927	5%	152
9th - 12th Grade, No Diploma	1,413	8%	149
High School Graduate	4,416	26%	215
Some College, No Degree	4,332	25%	202
Associate Degree	1,191	7%	114
Bachelor's Degree or more	4,821	28%	220
<b>Population Age 5+ Years by Ability to Speak English</b>			
Total	22,788	100%	499
Speak only English	15,780	69%	401
Non-English at Home <sup>1+2+3+4</sup>	7,008	31%	408
<sup>1</sup> Speak English "very well"	6,353	28%	408
<sup>2</sup> Speak English "well"	372	2%	92
<sup>3</sup> Speak English "not well"	163	1%	43
<sup>4</sup> Speak English "not at all"	120	1%	74
<sup>3+4</sup> Speak English "less than well"	283	1%	84
<sup>2+3+4</sup> Speak English "less than very well"	655	3%	124
<b>Linguistically Isolated Households*</b>			
Total	119	100%	32
Speak Spanish	119	100%	30
Speak Other Indo-European Languages	0	0%	12
Speak Asian-Pacific Island Languages	0	0%	12
Speak Other Languages	0	0%	12
<b>Households by Household Income</b>			
Household Income Base	10,101	100%	186
< \$15,000	1,811	18%	153
\$15,000 - \$25,000	1,608	16%	126
\$25,000 - \$50,000	2,826	28%	139
\$50,000 - \$75,000	1,451	14%	107
\$75,000 +	2,406	24%	173
<b>Occupied Housing Units by Tenure</b>			
Total	10,101	100%	186
Owner Occupied	6,832	68%	196
Renter Occupied	3,269	32%	174
<b>Employed Population Age 16+ Years</b>			
Total	19,656	100%	396
In Labor Force	9,722	49%	387
Civilian Unemployed in Labor Force	746	4%	157
Not In Labor Force	9,934	51%	262

**Data Note:** Detail may not sum to totals due to rounding. Hispanic population can be of anyrace.

N/A means not available. **Source:** U.S. Census Bureau, American Community Survey (ACS)

\*Households in which no one 14 and over speaks English "very well" or speaks English only.

Location: User-specified polygonal location

Ring (buffer): 0-miles radius

Description: Continental Mine PIP/LEP Area

	2015 - 2019 ACS Estimates	Percent	MOE (±)
<b>Population by Language Spoken at Home*</b>			
Total (persons age 5 and above)	19,167	100%	587
English	13,194	69%	533
Spanish	5,581	29%	485
French	25	0%	77
French Creole	N/A	N/A	N/A
Italian	N/A	N/A	N/A
Portuguese	N/A	N/A	N/A
German	25	0%	25
Yiddish	N/A	N/A	N/A
Other West Germanic	N/A	N/A	N/A
Scandinavian	N/A	N/A	N/A
Greek	N/A	N/A	N/A
Russian	N/A	N/A	N/A
Polish	N/A	N/A	N/A
Serbo-Croatian	N/A	N/A	N/A
Other Slavic	N/A	N/A	N/A
Armenian	N/A	N/A	N/A
Persian	N/A	N/A	N/A
Gujarathi	N/A	N/A	N/A
Hindi	N/A	N/A	N/A
Urdu	N/A	N/A	N/A
Other Indic	N/A	N/A	N/A
Other Indo-European	66	0%	77
Chinese	3	0%	17
Japanese	N/A	N/A	N/A
Korean	0	0%	17
Mon-Khmer, Cambodian	N/A	N/A	N/A
Hmong	N/A	N/A	N/A
Thai	N/A	N/A	N/A
Laotian	N/A	N/A	N/A
Vietnamese	0	0%	17
Other Asian	23	0%	35
Tagalog	33	0%	50
Other Pacific Island	N/A	N/A	N/A
Navajo	N/A	N/A	N/A
Other Native American	N/A	N/A	N/A
Hungarian	N/A	N/A	N/A
Arabic	0	0%	17
Hebrew	N/A	N/A	N/A
African	N/A	N/A	N/A
Other and non-specified	217	1%	150
Total Non-English	5,973	31%	793

**Data Note:** Detail may not sum to totals due to rounding. Hispanic population can be of any race.

N/A means not available. **Source:** U.S. Census Bureau, American Community Survey (ACS) 2015 - 2019.

\*Population by Language Spoken at Home is available at the census tract summary level and up.

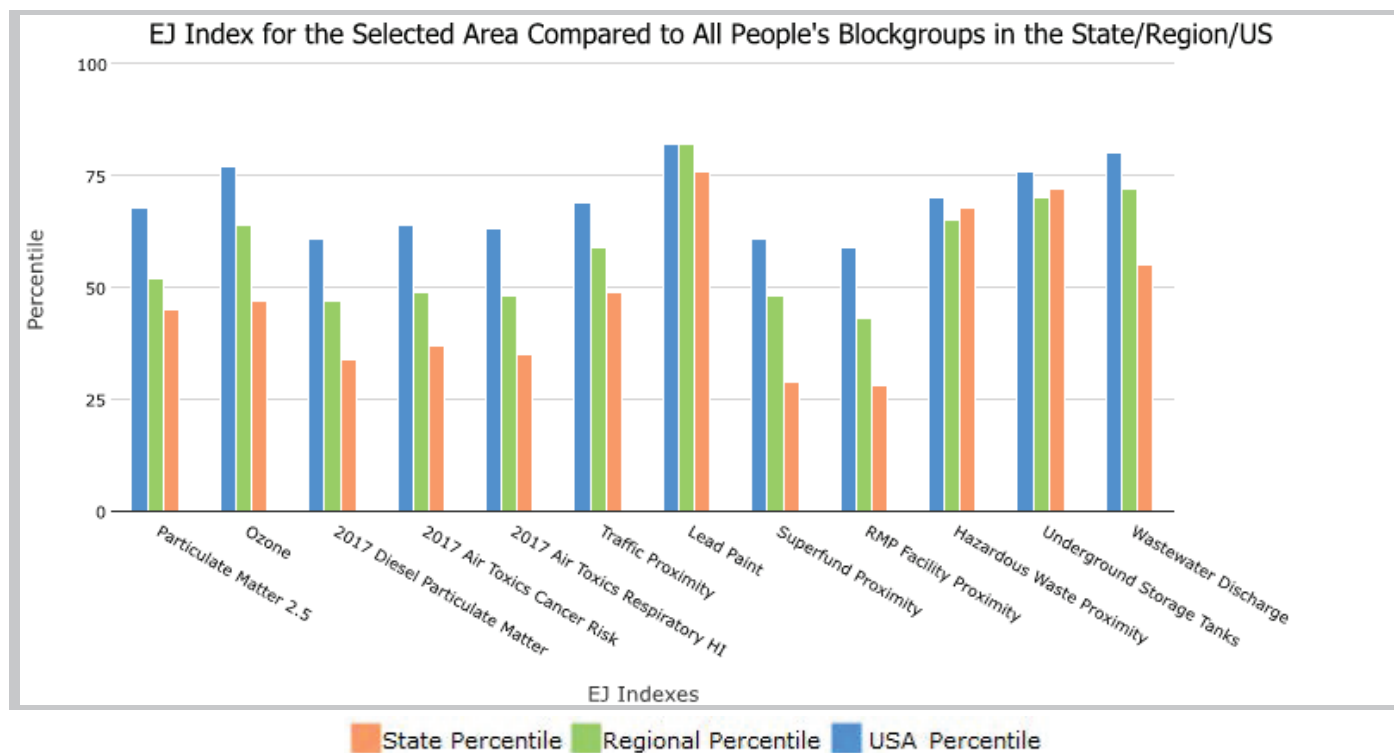
the User Specified Area, NEW MEXICO, EPA Region 6

Approximate Population: 24,119

Input Area (sq. miles): 231.00

Continental Mine PIP/LEP Area

Selected Variables	State Percentile	EPA Region Percentile	USA Percentile
<b>Environmental Justice Indexes</b>			
EJ Index for Particulate Matter 2.5	45	52	68
EJ Index for Ozone	47	64	77
EJ Index for 2017 Diesel Particulate Matter*	34	47	61
EJ Index for 2017 Air Toxics Cancer Risk*	37	49	64
EJ Index for 2017 Air Toxics Respiratory HI*	35	48	63
EJ Index for Traffic Proximity	49	59	69
EJ Index for Lead Paint	76	82	82
EJ Index for Superfund Proximity	29	48	61
EJ Index for RMP Facility Proximity	28	43	59
EJ Index for Hazardous Waste Proximity	68	65	70
EJ Index for Underground Storage Tanks	72	70	76
EJ Index for Wastewater Discharge	55	72	80



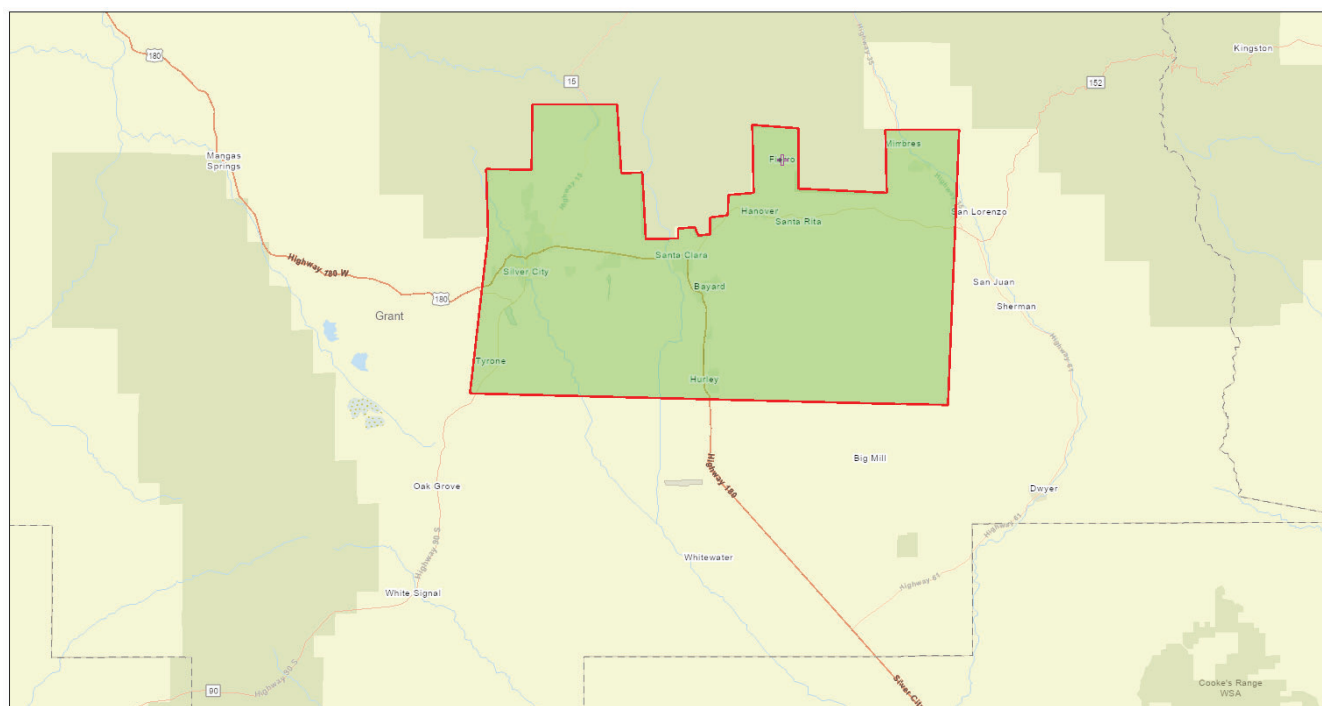
This report shows the values for environmental and demographic indicators and EJSCREEN indexes. It shows environmental and demographic raw data (e.g., the estimated concentration of ozone in the air), and also shows what percentile each raw data value represents. These percentiles provide perspective on how the selected block group or buffer area compares to the entire state, EPA region, or nation. For example, if a given location is at the 95th percentile nationwide, this means that only 5 percent of the US population has a higher block group value than the average person in the location being analyzed. The years for which the data are available, and the methods used, vary across these indicators. Important caveats and uncertainties apply to this screening-level information, so it is essential to understand the limitations on appropriate interpretations and applications of these indicators. Please see EJSCREEN documentation for discussion of these issues before using reports.

the User Specified Area, NEW MEXICO, EPA Region 6

Approximate Population: 24,119

Input Area (sq. miles): 231.00

Continental Mine PIP/LEP Area



October 6, 2022

- Continental Mine PIP/LEP Area
- Search Result (point)

1:288,895  
0 3 6 12 mi  
0 4.75 9.5 19 km

New Mexico State University, COMANP, Esri, HERE, Garmin, Foursquare, SafeGraph, METINASA, USGS, Bureau of Land Management, EPA, NPS, USDA

## Sites reporting to EPA

Superfund NPL

0

Hazardous Waste Treatment, Storage, and Disposal Facilities (TSDF)

1

## EJScreen Report (Version 2.0)

the User Specified Area, NEW MEXICO, EPA Region 6

Approximate Population: 24,119

Input Area (sq. miles): 231.00

Continental Mine PIP/LEP Area

Selected Variables	Value	State Avg.	%ile in State	EPA Region Avg.	%ile in EPA Region	USA Avg.	%ile in USA
<b>Pollution and Sources</b>							
Particulate Matter 2.5 ( $\mu\text{g}/\text{m}^3$ )	4.86	5.58	24	9.32	1	8.74	0
Ozone (ppb)	53.4	56.2	7	41.1	94	42.6	90
2017 Diesel Particulate Matter* ( $\mu\text{g}/\text{m}^3$ )	0.0311	0.208	12	0.219	<50th	0.295	<50th
2017 Air Toxics Cancer Risk* (lifetime risk per million)	10	20	21	32	<50th	29	<50th
2017 Air Toxics Respiratory HI*	0.1	0.24	16	0.37	<50th	0.36	<50th
Traffic Proximity (daily traffic count/distance to road)	150	480	36	470	45	710	41
Lead Paint (% Pre-1960 Housing)	0.28	0.18	76	0.16	79	0.28	61
Superfund Proximity (site count/km distance)	0.0068	0.13	1	0.08	2	0.13	1
RMP Facility Proximity (facility count/km distance)	0.011	0.25	1	0.83	0	0.75	0
Hazardous Waste Proximity (facility count/km distance)	0.49	0.82	63	0.8	59	2.2	43
Underground Storage Tanks (count/km <sup>2</sup> )	2.6	2.5	73	2	71	3.9	64
Wastewater Discharge (toxicity-weighted concentration/m distance)	0.0035	4.6	45	0.5	62	12	60
<b>Socioeconomic Indicators</b>							
Demographic Index	52%	52%	52	44%	64	36%	76
People of Color	58%	63%	42	52%	57	40%	70
Low Income	47%	41%	62	36%	70	31%	77
Unemployment Rate	8%	7%	66	5%	76	5%	75
Linguistically Isolated	1%	5%	35	6%	42	5%	50
Less Than High School Education	14%	14%	55	15%	55	12%	66
Under Age 5	6%	6%	48	7%	39	6%	48
Over Age 64	25%	17%	83	13%	92	16%	87

\*Diesel particulate matter, air toxics cancer risk, and air toxics respiratory hazard index are from the EPA's 2017 Air Toxics Data Update, which is the Agency's ongoing, comprehensive evaluation of air toxics in the United States. This effort aims to prioritize air toxics, emission sources, and locations of interest for further study. It is important to remember that the air toxics data presented here provide broad estimates of health risks over geographic areas of the country, not definitive risks to specific individuals or locations. Cancer risks and hazard indices from the Air Toxics Data Update are reported to one significant figure and any additional significant figures here are due to rounding. More information on the Air Toxics Data Update can be found at: <https://www.epa.gov/haps/air-toxics-data-update>.

For additional information, see: [www.epa.gov/environmentaljustice](https://www.epa.gov/environmentaljustice)

EJScreen is a screening tool for pre-decisional use only. It can help identify areas that may warrant additional consideration, analysis, or outreach. It does not provide a basis for decision-making, but it may help identify potential areas of EJ concern. Users should keep in mind that screening tools are subject to substantial uncertainty in their demographic and environmental data, particularly when looking at small geographic areas. Important caveats and uncertainties apply to this screening-level information, so it is essential to understand the limitations on appropriate interpretations and applications of these indicators. Please see EJScreen documentation for discussion of these issues before using reports. This screening tool does not provide data on every environmental impact and demographic factor that may be relevant to a particular location. EJScreen outputs should be supplemented with additional information and local knowledge before taking any action to address potential EJ concerns.