

Roswell North Range Munitions Response Site (MRS)
Military Munitions Response Program - Proposed Remedial Action
Chaves County, New Mexico (NM)

BACKGROUND

The Roswell North Range MRS, located about 10 miles northeast of the center of Roswell, NM, was used as a multi-purpose training area by the NM Army National Guard from 1965 until 2000. Potential munitions and explosives of concern and contaminated soil are present within the MRS. A remedial action will be completed at the approximately 244-acre MRS to remove potential munitions and explosives of concern (MEC) on the surface using metal detectors. Additionally, lead-contaminated soil, related to munitions use, will be treated and transported from the MRS.



Roswell North Range MRS

PROPOSED REMEDIAL ACTION

The Proposed Remedial Action includes a surface clearance using hand-held analog geophysical sensors (metal detectors). Land use controls (a warning sign) will be installed at the MRS entrance since the subsurface will not be cleared of MEC. Lead-contaminated soil present within the sinkhole portion of the MRS will be excavated and disposed of off-site.



Step 1: Surface Clearance

- Survey to remove metallic items on the ground surface using hand-held metal detectors.



Step 2: Munitions Removal

- Removal of items classified as potential munitions and explosives of concern, as required.



Step 4: Soil Removal

- Excavation of lead-contaminated soil in berm areas of the sinkhole portion of the MRS.



Step 4: Sign Installation

- Installation of warning sign at entrance to MRS.

THE 3 R's OF EXPLOSIVE SAFETY

Raising the public awareness of potential dangers of unexploded items is among the highest priorities of the Army National Guard. If suspected munitions are ever encountered, the 3 R's should be followed.



RECOGNIZE: Recognize when you may have encountered a munition item.

RETREAT: Do not touch, move, or disturb it, but carefully leave the area the way you entered.

REPORT: Call 911 immediately to notify local law enforcement of what you saw and where you saw it.

CONTACT

LTC Donna Wu, Army National Guard Directorate at donna.s.wu@mail.mil or call (703) 607-2177

Justin D. Ball, New Mexico Environment Department at justin.ball@state.nm.us or call (505) 670-1428

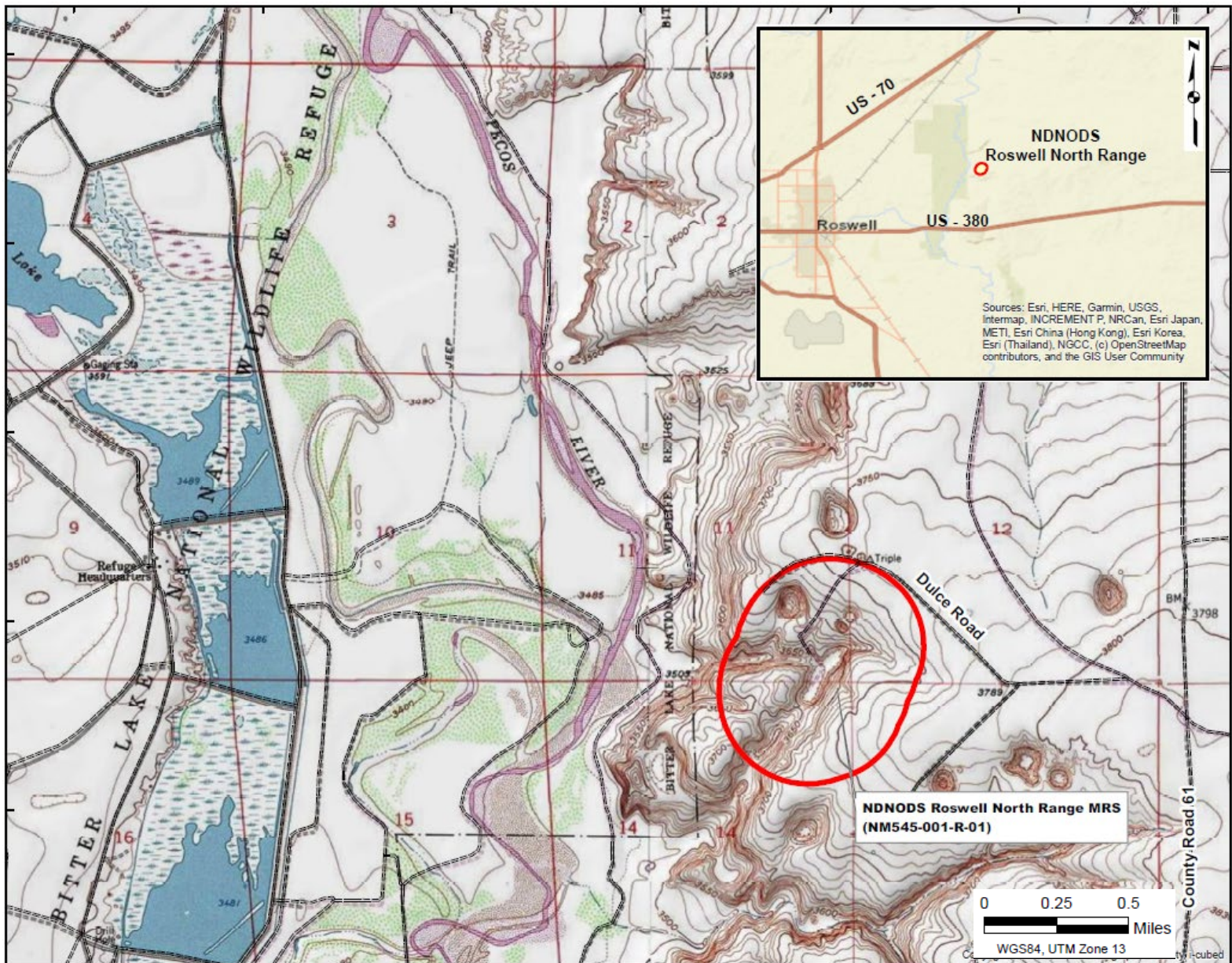
Paul Chamberlain, New Mexico Environment Department at paul.chamberlain@state.nm.us or call (505) 670-2571

Christopher Bolen, Bureau of Land Management at cbolen@blm.gov or call (575) 627-0292

ADDITIONAL INFORMATION

Information Repository:
Roswell Public Library
301 N. Pennsylvania Ave.
Roswell, NM 88201
<https://www.roswellgov.com/discover-us/cultural-arts-center/additional-information/roswell-archives-and-research-library>

Roswell North Range Munitions Response Site (MRS)
Military Munitions Response Program - Proposed Remedial Action
Chaves County, New Mexico (NM)



Roswell North Range MRS Site Location Map