



NEW MEXICO ENVIRONMENT DEPARTMENT
GROUND WATER QUALITY BUREAU
PUBLIC INVOLVEMENT PLAN
(PIP)



Facility Name: City of Bayard Wastewater Treatment Facility

Facility Location: 208 North Hurley Road
Bayard, New Mexico 88023
Section 18, Township 18S, Range 12W

Reuse Site Locations: Sections 12 and 13, Township 18S, Range 13W

County: Grant

Responsible Party: Kristina Ortiz, Clerk Treasurer
City of Bayard
P.O. 728
Bayard, New Mexico 88023

Agency: Ground Water Quality Bureau
Pollution Prevention Section

GWQB Action: Permitting - Renewal
DP-1611

Bureau Contact: Gerald Knutson, Environmental Scientist & Specialist A
(505) 660-7189
gerald.knutson@state.nm.us

Main bureau telephone number:
(505) 827-2900

EFFECTIVE DATE: February 10, 2022

REVISION DATE: N/A

/s/ Melanie Sandoval for

Justin Ball
Acting Chief, Ground Water Quality Bureau

Element 1 – Public Involvement Plan (PIP) Overview

The New Mexico Environment Department (NMED or Department), Ground Water Quality Bureau (Bureau) has developed this PIP for the application for a renewal of the Ground Water Discharge Permit for the City of Bayard Wastewater Treatment Facility. The permit for this facility is referred to as DP-1611.

The purpose of this PIP is to plan for providing public participation opportunities and information that may be needed for the community to participate in the permitting process for this facility. This PIP identifies information about the community and resources needed by the Bureau to incorporate community participation activities into the decision-making process. This PIP is developed in accordance with the Department's *Public Participation Policy* (Policy 07-13 or Policy), and incorporates the requirements of the Policy, as well as applicable regulatory and statutory public participation requirements.

This PIP implements the “elements” set forth in the Policy. Those elements include:

1. An overview of the Public Involvement Plan for the community affected by the activity
2. Bureau contact names and contact information, specifically for Limited English Proficiency (LEP) language assistance services (e.g., translation, interpreters) or for disability accommodations
3. A summary of the regulatory public participation framework associated with discharge permits
4. A description of community/stakeholder groups based on results of a preliminary environmental justice (EJ) screening
5. Details about planned public outreach activities

In developing this PIP, community participation needs were assessed to ensure appropriate public outreach. This was accomplished by identifying whether there is a combination of environmental and demographic factors that may impact public participation (e.g., low-income community, minority community, LEP individuals, linguistically isolated households).

Public involvement associated with discharge permits occurs at different stages and in different forms. Public involvement activities required by statute or regulation are mandatory and subject to statutory or regulatory deadlines. Mandatory public involvement activities and associated time requirements relevant to this PIP are noted in the *Table of Mandated Public Involvement Activities* at the end of this PIP.

The Bureau plans to conduct the public involvement activities related to the permitting process outlined in the *Table of Public Involvement Activities* below. The activity timeline and dates are tentative and subject to change.

Table of Public Involvement Activities

Activity	Date
Application Notice (PN-1) <i>See Table of Mandated Public Involvement Activities at the end of this PIP for details.</i>	March 2022
Placement of a hardcopy of the PIP in the local NMED office: NMED Silver City Office 2082 32nd Street By-Pass Road, Suite D Silver City, NM 88345 (575) 388-1934	February 2022
Notice of availability of draft permit (PN-2) <i>See Table of Mandated Public Involvement Activities.</i>	Within 60 days of determining the application is technically complete. date to be determined

All notices for upcoming meetings or hearings will include a statement that any person who requires assistance, an interpreter, or an auxiliary aid to participate in the process may contact a specifically identified Department person to request those services. Requested interpretation services during the meeting and accommodations or services for persons with disabilities will be arranged to the extent possible.

This PIP is a “living” document that may be amended for numerous reasons, including the consideration of public comments and feedback.

Element 2 – Bureau Contact Information

PIP Specific Contacts

The Bureau contact for this discharge permit is:

Gerald Knutson, Environmental Scientist & Specialist A
NMED Ground Water Quality Bureau
P.O. Box 5469, Santa Fe, NM 87502-5469
(505) 660-7189 / gerald.knutson@state.nm.us

Non-English Language Speaker Assistance

All public notices will contain a statement that non-English speakers may call the Bureau contact listed above and request language assistance in order to learn more about this permit or the

permitting process. Arrangements may be made for document translation or interpretation related to the permitting process as necessary and as resources allow.

Individuals with Disabilities Assistance

All public notices will contain a statement that individuals with disabilities may call the Bureau contact listed above and request assistance needed to participate in activities associated with the permitting process.

The following information will be provided in public notices so that individuals who are deaf, hard of hearing, or have difficulty speaking on the phone can contact the Bureau and ask questions about the activity or proceeding: Telephone conversation assistance is available through Relay New Mexico at no charge for people who are deaf, hard of hearing, or have difficulty speaking on the phone, by calling 1-800-659-1779 (English); 1-800-327-1857 (Spanish); TTY users: 1-800-659-8331.

Websites

Outreach materials and notices will include links to the following website, where the Bureau's public notices and PIP information are posted:

Ground Water Quality Bureau – <https://www.env.nm.gov/public-notices/>

Element 3 – Regulatory Framework for Public Participation Related to the Permitting Process

The public participation regulatory framework associated with the permitting process is identified in the *Table of Mandated Public Involvement Activities* at the end of this PIP. The Table identifies activities subject to statutory or regulatory deadlines, the associated regulatory requirements, and the associated dates or time periods.

Element 4 – Description of Community/Stakeholder Groups Based on the EJSCREEN

EJSCREEN Summary

To provide for adequate public participation opportunities and meaningful involvement of persons in the permitting process, the affected communities must first be identified, informed about proposed environmental actions affecting the community, and invited to share their comments and concerns. The EJSCREEN tool developed by the U.S. Environmental Protection Agency (EPA) helps identify communities that are low income, have minority populations, and have limited English proficiency that may benefit from a variety of approaches for notification and outreach communication. This information is used to help plan for the community's involvement in the public process for environmental activities or actions. In addition to the EJSCREEN results,

the Bureau may consider additional information such as the U.S. Census Bureau website or NMED's EJ Mapping Tool.

The Bureau considers the affected community to be those persons living within a 4-mile radius of the discharge sites. The results of the EJSCREEN American Community Survey (ACS) Summary Report (attached to this PIP) are summarized in the table below.

EJSCREEN Results for the Affected Community

Total population	6,484
Total number of households	2,441
Percentage minority population	76%
Percentage Hispanic population	72%
Percentage of the population by race	Population reporting one race: White: 94% Black: 2% American Indian: 2% Asian: 0% Pacific Islander: 0% Some Other Race: 1%
Total number of persons greater than the age of five who speak English "less than very well"	196
Percentage of persons greater than the age of five who speak English "less than very well"	3%
Total number of linguistically isolated households	70
Percentage of linguistically isolated households (Total number of linguistically isolated households ÷ total number of households) X 100	3%
Languages by percentage in linguistically isolated households	Spanish: 100% Other Indo-European languages: 0% Asian-Pacific Island languages: .. 0% Other languages: 0%
Percent linguistically isolated population, New Mexico*:	5.4%
Per capita income	\$21,889
Per capita income, USA**	\$29,979

* U.S. Census Bureau. 2011-2015 American Community Survey 5-Year Estimates, Table S1602. Limited English-Speaking Households. https://factfinder.census.gov/bkmk/table/1.0/en/ACS/15_5YR/S1602/0400000US35 (date of access: 7/26/2018).

** U.S. Census Bureau. 2015 American Community Survey 1-Year Estimates, Table S0201. Selected Population Profile in the United States. https://factfinder.census.gov/bkmk/table/1.0/en/ACS/15_1YR/S0201/0100000US (date of access: 7/26/2018).

Based on the EJSCREEN results regarding language proficiencies, the Bureau plans to conduct public outreach in accordance with the *Table of Mandated Public Involvement Activities* at the end of this PIP.

Element 5 – Detailed Actions and Outreach Activities with the Affected Public

Public involvement activities required by statute or regulation for this permitting action are listed in the *Table of Mandated Public Involvement Activities* at the end of this document.

Public Participation – Outreach Activities

The Bureau will conduct the following outreach activities during this permitting process:

- Placement of this PIP on the Bureau website and in nearby NMED field office
- Postal mailing and email notices
- Newspaper notices
- Notice posted on NMED website

Newspapers to be utilized in the notification process include:

Statewide circulation (English): Albuquerque Journal

Local circulation (English): Silver City Daily Press – Grant County

Local, state, and federal government agencies, tribal entities, land grant officials and colonias will be notified about the permitting process. A list of the agencies and officials notified can be provided upon request.

Indian Tribes, Pueblos and Nations will be notified about the permitting action through the contacts maintained by the Indian Affairs Department at the following URLs:

<https://www.iad.state.nm.us/pueblo-tribes-and-nations/pueblos/>

<https://www.iad.state.nm.us/pueblo-tribes-and-nations/navajo/>

<https://www.iad.state.nm.us/pueblo-tribes-and-nations/apaches/>

Because of the proximity to the Arenas Valley, Bayard, Central, North Hurley, Santa Clara, and Vanadium colonias, a courtesy email will be sent to the Administrative Assistant for the Southwest (District 5) New Mexico Council of Governments.

Timelines and methods for submitting public comments are specified in the *Table of Mandated Public Involvement Activities*. Final discharge permit documents will be available from the Bureau's contact identified in Element 2 of this PIP.

Postal Mailing or E-Mailing of Notices to Persons on the Facility-Specific Mailing List

The Bureau solicits the names and contact information of interested parties with all public notices. The Bureau maintains those names on a Facility-Specific Mailing List and provides the individuals with information about regulatory activities for the facility. Individuals, organizations, and other interested parties are added to the mailing list as requested. All public notices will contain a statement directing interested individuals to contact the Bureau contact for this permit if they want to be added to the facility specific mailing list.

Other means of outreach such as fliers announcing public comment periods and/or public meetings or hearings may be posted in locations throughout the community (e.g., local businesses, schools, libraries) and on the Department's website, at the Bureau's discretion after consideration of public interest and input.

PIP Contingency Plan

During a public health emergency or other unforeseen event outside the control of the Department, the Department will make every effort to ensure the public remains involved in and informed of the decision making and permit processes. The purpose of this PIP Contingency Plan is in part to address circumstances when public spaces are closed because of potential human exposure risks. The Department will attempt to identify and utilize alternate methods of document delivery to the public and public viewing when conventional methods and locations are unavailable. When it is unsafe to utilize the physical PIP and document repositories, the Department will consider utilizing electronic delivery methods deemed appropriate for the permitting action. While operating under the PIP Contingency Plan, the PN-2 will include a statement specifying that the PIP Contingency Plan is in effect and that, "instead of placing a copy of the PIP for this permitting action in a public location, NMED will make the PIP available to the community by sending the PIP by email or US mail to any community member requesting a copy. An individual may request a copy of the PIP utilizing the Bureau contact information in this public notice. When making such a request, please specify how you would like the document delivered. If you request a copy of a PIP, you will receive a revised PIP should the PIP be updated in the future." During the times of potential human exposure risks and the resultant implementation of this PIP Contingency Plan, public meetings and hearings will only be held when or through means by which the Department can ensure the public's health and safety and this PIP can be fully adhered to.

Attachments

A copy of the EJSCREEN ACS Summary Report, and a map showing the area evaluated

Table of Mandated Public Involvement Activities

Activity	Dates
<p>Application Notice (PN-1): The first notice of the Bureau's receipt of the permit application – applicant's obligations at 20.6.2.3108.B and C NMAC – Bureau's obligations at 20.6.2.3108.E NMAC</p> <ul style="list-style-type: none"> • Newspaper display ads (PN-1 synopsis¹ in English and Spanish)- Applicant obligation • NMED website https://www.env.nm.gov/public-notices/ • Notice to government agencies • Notice to interested parties 	<p>Within 30 days of the department deeming the application administratively complete</p>
<p>Permit Notice (PN-2): Notice to the public of the availability of a draft permit for a 30-day review and comment period – the notice will outline the process for requesting a public hearing – obligation at 20.6.2.3108.H through J NMAC</p> <ul style="list-style-type: none"> • NMED website https://www.env.nm.gov/public-notices/ • Newspaper legal ads • Notification of interested parties • Notice to government agencies • Notice to Indian Tribes, Pueblos and Nations 	<p>Within 60 days of the department determining the application is technically complete and drafting a permit.</p>
<p>Fact Sheet (for federal facilities, except those with only domestic waste discharges): To include general information regarding the permittee, the facility, the discharge, procedures to be followed in making a final permit determination, the comment period, procedures for a person to request a hearing, contact information to obtain a copy of the draft permit and fact sheet, and a brief summary of the basis of draft permit conditions – obligation at 20.6.2.3108.I NMAC²</p>	<p>With the PN-2</p>
<p>Public Hearing Notice (if required): Upon the Department's determination that there is substantial public interest in the permit – obligation at 20.6.2.3108.M NMAC. Notice includes information on how to participate in the hearing, and how to request an interpreter or auxiliary aid if needed.</p> <ul style="list-style-type: none"> • NMED website https://www.env.nm.gov/public-notices/ • Newspapers 	<p>Notice of the hearing shall occur at least 30 days prior to the hearing.</p>

¹ Suitable for display, the abbreviated format of the PN-1 synopsis does not contain all the information provided by a full public notice, e.g., language assistance or non-discrimination information.

² NMED considers the cited regulation to more appropriately reference the information in 20.6.2.3108.K instead distribution methods of 20.6.2.3108.J NMAC.

<ul style="list-style-type: none"> • Notice to interested parties • Notice to government agencies • Notice to Indian Tribes, Pueblos and Nations 	
<p>Response to Comments (if comments received): Upon the Secretary's decision regarding issuance of a discharge permit – obligation at 20.6.2.3109.B NMAC. The Response to Comments shall specify which provisions, if any, in the draft permit were changed and the reasons for the change and shall briefly describe and respond to all significant comments on the draft permit raised during the public comment period or at any hearing. The Secretary shall notify persons who participated in the permitting action by mail or email of the action taken and the reasons for such action and shall include a copy of the Response to Comments.</p>	<p>Response is issued 30 days after the administrative record is complete and all required information is available</p>

Location: User-specified polygonal location
Ring (buffer): 4-miles radius
Description: DP-1611

Summary of ACS Estimates		2014 - 2018	
Population			6,484
Population Density (per sq. mile)			175
People of Color Population			4,913
% People of Color Population			76%
Households			2,441
Housing Units			3,132
Housing Units Built Before 1950			768
Per Capita Income			21,889
Land Area (sq. miles) (Source: SF1)			36.96
% Land Area			100%
Water Area (sq. miles) (Source: SF1)			0.08
% Water Area			0%

	2014 - 2018 ACS Estimates	Percent	MOE (±)
Population by Race			
Total	6,484	100%	400
Population Reporting One Race	6,443	99%	641
White	6,119	94%	376
Black	141	2%	120
American Indian	107	2%	94
Asian	0	0%	12
Pacific Islander	0	0%	12
Some Other Race	76	1%	27
Population Reporting Two or More Races	41	1%	49
Total Hispanic Population	4,658	72%	354
Total Non-Hispanic Population	1,826		
White Alone	1,571	24%	299
Black Alone	139	2%	120
American Indian Alone	100	2%	94
Non-Hispanic Asian Alone	0	0%	12
Pacific Islander Alone	0	0%	12
Other Race Alone	7	0%	12
Two or More Races Alone	9	0%	42
Population by Sex			
Male	3,355	52%	233
Female	3,129	48%	242
Population by Age			
Age 0-4	396	6%	72
Age 0-17	1,695	26%	143
Age 18+	4,789	74%	343
Age 65+	1,474	23%	178

Data Note: Detail may not sum to totals due to rounding. Hispanic population can be of any race.

N/A means not available. **Source:** U.S. Census Bureau, American Community Survey (ACS) 2014 - 2018

Location: User-specified polygonal location

Ring (buffer): 4-miles radius

Description: DP-1611

	2014 - 2018 ACS Estimates	Percent	MOE (±)
Population 25+ by Educational Attainment			
Total	4,299	100%	311
Less than 9th Grade	338	8%	73
9th - 12th Grade, No Diploma	440	10%	109
High School Graduate	1,423	33%	154
Some College, No Degree	1,432	33%	217
Associate Degree	389	9%	109
Bachelor's Degree or more	666	15%	174
Population Age 5+ Years by Ability to Speak English			
Total	6,088	100%	400
Speak only English	3,714	61%	306
Non-English at Home ¹⁺²⁺³⁺⁴	2,374	39%	270
¹ Speak English "very well"	2,178	36%	257
² Speak English "well"	85	1%	26
³ Speak English "not well"	66	1%	40
⁴ Speak English "not at all"	44	1%	39
³⁺⁴ Speak English "less than well"	110	2%	54
²⁺³⁺⁴ Speak English "less than very well"	196	3%	58
Linguistically Isolated Households*			
Total	70	100%	27
Speak Spanish	70	100%	24
Speak Other Indo-European Languages	0	0%	12
Speak Asian-Pacific Island Languages	0	0%	12
Speak Other Languages	0	0%	12
Households by Household Income			
Household Income Base	2,441	100%	150
< \$15,000	428	18%	99
\$15,000 - \$25,000	410	17%	76
\$25,000 - \$50,000	777	32%	152
\$50,000 - \$75,000	421	17%	89
\$75,000 +	404	17%	149
Occupied Housing Units by Tenure			
Total	2,441	100%	150
Owner Occupied	1,771	73%	141
Renter Occupied	671	27%	114
Employed Population Age 16+ Years			
Total	4,928	100%	356
In Labor Force	2,457	50%	276
Civilian Unemployed in Labor Force	290	6%	62
Not In Labor Force	2,472	50%	243

Data Note: Detail may not sum to totals due to rounding. Hispanic population can be of anyrace.

N/A means not available. **Source:** U.S. Census Bureau, American Community Survey (ACS)

*Households in which no one 14 and over speaks English "very well" or speaks English only.

Location: User-specified polygonal location

Ring (buffer): 4-miles radius

Description: DP-1611

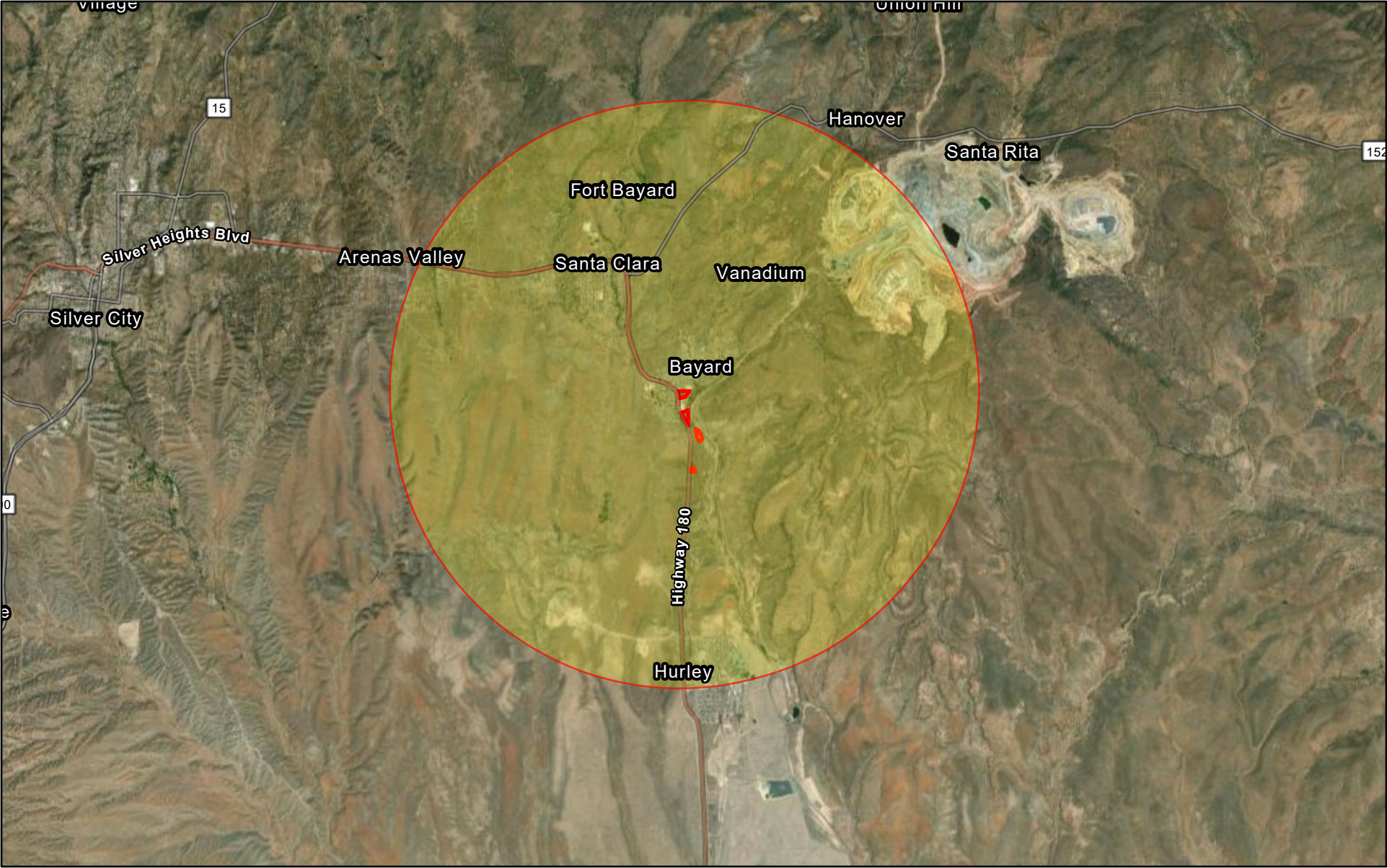
	2014 - 2018 ACS Estimates	Percent	MOE (±)
Population by Language Spoken at Home*			
Total (persons age 5 and above)	5,417	100%	344
English	3,468	64%	311
Spanish	1,894	35%	217
French	0	0%	12
French Creole	N/A	N/A	N/A
Italian	N/A	N/A	N/A
Portuguese	N/A	N/A	N/A
German	12	0%	25
Yiddish	N/A	N/A	N/A
Other West Germanic	N/A	N/A	N/A
Scandinavian	N/A	N/A	N/A
Greek	N/A	N/A	N/A
Russian	N/A	N/A	N/A
Polish	N/A	N/A	N/A
Serbo-Croatian	N/A	N/A	N/A
Other Slavic	N/A	N/A	N/A
Armenian	N/A	N/A	N/A
Persian	N/A	N/A	N/A
Gujarathi	N/A	N/A	N/A
Hindi	N/A	N/A	N/A
Urdu	N/A	N/A	N/A
Other Indic	N/A	N/A	N/A
Other Indo-European	0	0%	12
Chinese	0	0%	12
Japanese	N/A	N/A	N/A
Korean	0	0%	12
Mon-Khmer, Cambodian	N/A	N/A	N/A
Hmong	N/A	N/A	N/A
Thai	N/A	N/A	N/A
Laotian	N/A	N/A	N/A
Vietnamese	0	0%	12
Other Asian	2	0%	12
Tagalog	0	0%	12
Other Pacific Island	N/A	N/A	N/A
Navajo	N/A	N/A	N/A
Other Native American	N/A	N/A	N/A
Hungarian	N/A	N/A	N/A
Arabic	0	0%	12
Hebrew	N/A	N/A	N/A
African	N/A	N/A	N/A
Other and non-specified	41	1%	57
Total Non-English	1,948	36%	456

Data Note: Detail may not sum to totals due to rounding. Hispanic population can be of any race.





N/A means not available. **Source:** U.S. Census Bureau, American Community Survey (ACS) 2014 - 2018.

*Population by Language Spoken at Home is available at the census tract summary level and up.

DP-1611



2/2/2022

-  DP-1611  Project 2
-  Project 3  Project 1

